

EFFECTIVE:
20-JUN-11

SUPERSEDES:
03-AUG-09

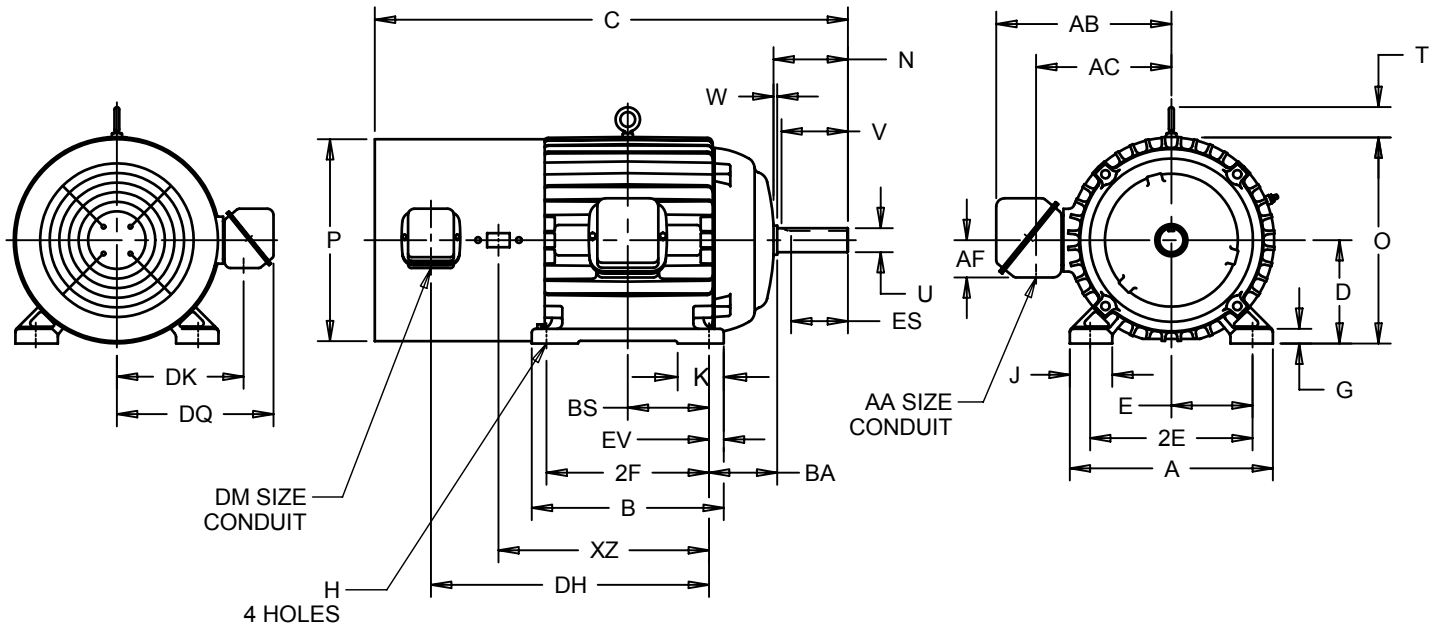
HORIZONTAL MOTORS

VECTOR CONTROL

FRAME: 213, 215T
BASIC TYPE: CTI

PRINT:
07-2901

SHEET:
1 OF 1



ALL DIMENSIONS ARE IN INCHES AND MILLIMETERS

UNITS	A	B	C	D -.06	E	2E ±.03	G	H +.05	J	N	O
IN	10.50	8.50	26.88	5.25	4.25	8.50	.56	.41	1.75	3.75	10.81
MM	267	216	683	133	108	216	14	10	44	95	275

UNITS	P ²	T	U -.0005	V MIN	W	AA	AB	AC	AF	BA
IN	10.88	2.06	1.3750	3.19	.38	1.00 NPT	8.88	7.06	2.00	3.50
MM	276	52	34.925	81	10		226	179	51	89

UNITS	BS	DH	DK	DM	DQ	ES MIN	EV	XZ	SQ KEY
IN	3.50	18.50	6.75	.75 NPT	8.31	2.44	.75	13.75	.313
MM	89	470	171		211	62	19	349	7.95

FRAME	UNITS	2F ±.03
213T	IN	5.50
	MM	140
215T	IN	7.00
	MM	178

- 1: ALL ROUGH DIMENSIONS MAY VARY .25" DUE TO CASTING AND/OR FABRICATION VARIATIONS.
- 2: LARGEST MOTOR WIDTH.
- 3: TOLERANCES SHOWN ARE IN INCHES ONLY.
- 4: STANDARD ASSEMBLY POSITION F-1 IS SHOWN F-2 IS PROVIDED WHEN SPECIFIED. CONDUIT OPENINGS MAY BE LOCATED IN STEPS OF 90° REGARDLESS OF LOCATION. STANDARD AS SHOWN WITH CONDUIT OPENING DOWN.

07-2901/A

Nidec Motor Corporation
St. Louis, Missouri

INFORMATION DISCLOSED ON THIS DOCUMENT
IS CONSIDERED PROPRIETARY AND SHALL NOT BE
REPRODUCED OR DISCLOSED WITHOUT WRITTEN
CONSENT OF NIDEC MOTOR CORPORATION



ISSUED BY
A. HINGANKAR
APPROVED BY
R. KING

IHP_DP_NMCA (MAR-2011) SOLIDEDGE