

EFFECTIVE:
22-JUN-11

HORIZONTAL MOTORS

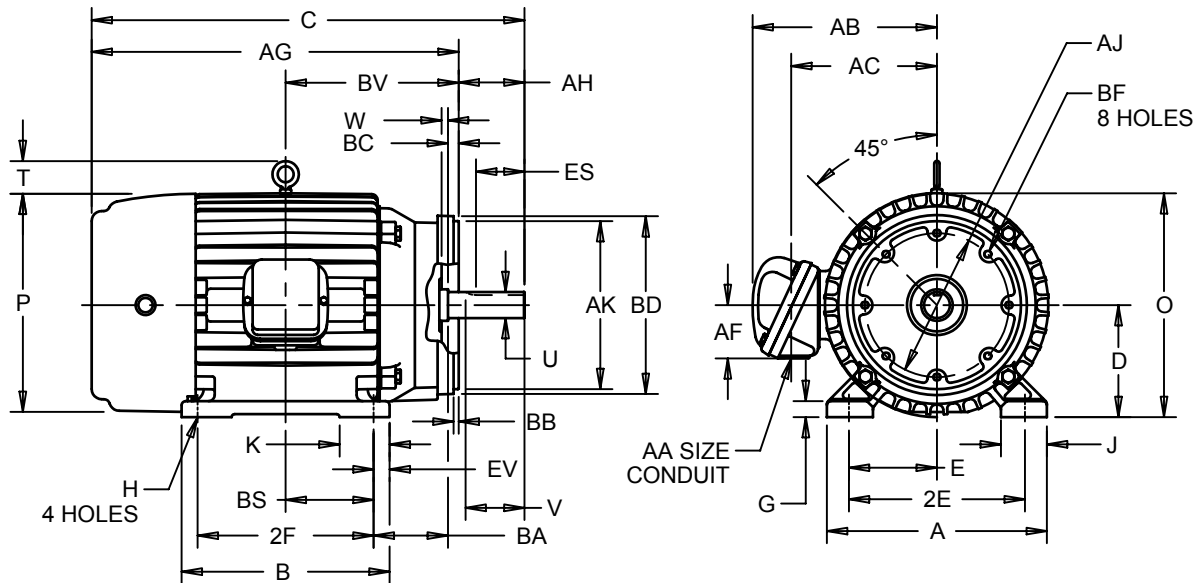
AUTOMOTIVE DUTY WITH NEMA "C" BRACKET KIT

PRINT:
07-2913

SUPERSEDES:
04-AUG-09

FRAME: 213, 215C
BASIC TYPE: JAD, JDE

SHEET:
1 OF 1



ALL DIMENSIONS ARE IN INCHES AND MILLIMETERS

UNITS	A	B	C	D -.06	E	2E ±.03	G	H +.05	J	N	O
IN	10.50	8.50	18.69	5.25	4.25	8.50	.50	.41	1.75	3.19	10.94
MM	267	216	475	133	108	216	13	10	44	81	278

UNITS	P ⁵	T	U -.0005	V	W	AA	AB	AC	AF	AG	AH	AJ
IN	11.44	2.03	1.1250	2.75	.19	1.00 NPT	9.81	7.25	2.00	15.94	2.75	7.250
MM	291	52	28.575	70	5		249	184	51	405	70	184.15

UNITS	AK -.003	BA ⁷	BB	BC	BD MAX	BF ²	BS	BV	ES MIN	EV	SQ KEY
IN	8.500	3.50	.25	.25	8.88	1/2-13 X .88	3.50	7.25	2.13	.75	.250
MM	215.90	89	6	6	226		89	184	54	19	6.35

FRAME	UNITS	2F ±.03
213C	IN	5.50
	MM	140
215C	IN	7.00
	MM	178

TOLERANCES	
FACE RUNOUT	.004 T.I.R.
PERMISSIBLE ECCENTRICITY OF MOUNTING RABBET	.004 T.I.R.
PERMISSIBLE SHAFT RUNOUT	.002 T.I.R.

- 1: ALL ROUGH DIMENSIONS MAY VARY BY .25" DUE TO CASTING AND/OR FABRICATION VARIATIONS.
- 2: TAP SIZE AND BOLT PENETRATION ALLOWANCE.
- 3: ALL TAPPED HOLES ARE UNIFIED NATIONAL COARSE, RIGHT HAND THREAD.
- 4: CONDUIT BOX MAY BE LOCATED ON EITHER SIDE OF MOTOR. CONDUIT OPENINGS MAY BE LOCATED IN STEPS OF 90° REGARDLESS OF LOCATION. STANDARD AS SHOWN WITH CONDUIT OPENING DOWN.
- 5: LARGEST MOTOR WIDTH.
- 6: TOLERANCES SHOWN ARE IN INCHES ONLY.
- 7: NON-NEMA BA DIMENSION.

07-2913/A

Nidec Motor Corporation
St. Louis, Missouri

INFORMATION DISCLOSED ON THIS DOCUMENT IS CONSIDERED PROPRIETARY AND SHALL NOT BE REPRODUCED OR DISCLOSED WITHOUT WRITTEN CONSENT OF NIDEC MOTOR CORPORATION



ISSUED BY
A. HINGANKAR
APPROVED BY
R. KING

IHP_DP_NMCA (MAR-2011) SOLIDEDGE