

EFFECTIVE:  
**26-MAR-12**

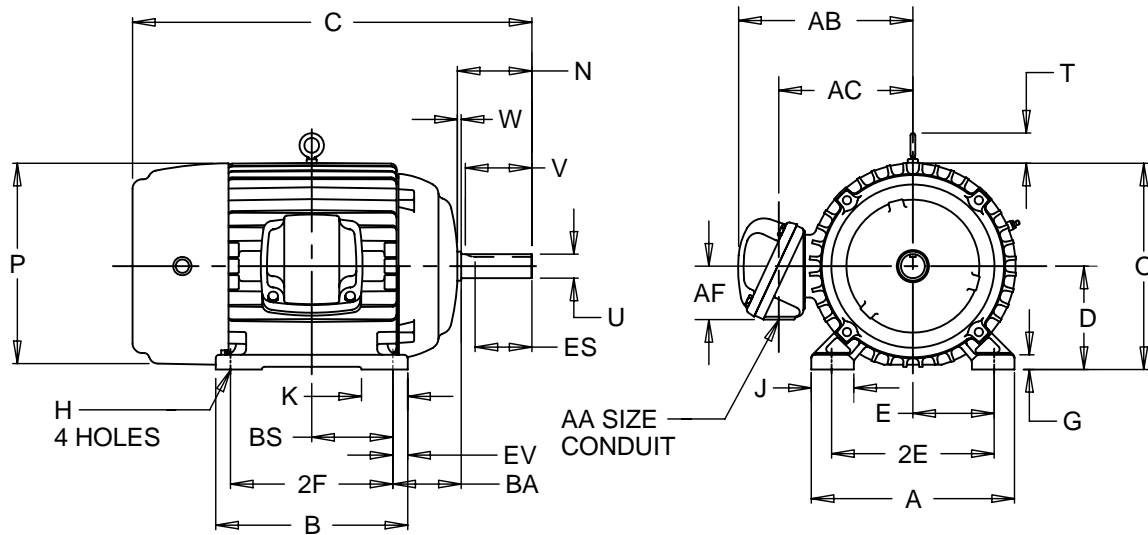
# HORIZONTAL MOTORS

PRINT:  
**07-2916**

SUPERSEDES:  
**08-MAR-10**

FRAME: 444, 445, 447, 449T  
BASIC TYPE: L, N

SHEET:  
**1 OF 1**



ALL DIMENSIONS ARE IN INCHES AND MILLIMETERS

UNITS	A	D -.06	E	2E ±.03	G	H +.05	J	N	O	P <sup>2</sup>	T
IN	22.00	11.00	9.00	18.00	1.50	.81	4.00	8.88	22.13	22.25	3.25
MM	559	279	229	457	38	21	102	226	562	565	83

UNITS	U -.001	V MIN	W	AA	AB	AC	AF	BA ±.09	ES MIN	EV	SQ KEY
IN	3.375	8.25	.38	3 NPT	19.66	14.63	4.56	7.50	6.91	1.50	.875
MM	85.73	210	10		499	372	116	191	176	38	22.23

FRAME	UNITS	B	C	K	BS
444, 445 T	IN	19.50	45.75	6.00	8.25
	MM	495	1162	152	210
447 T	IN	23.00	49.38	4.00	10.00
	MM	584	1254	102	254
449 T	IN	28.00	54.63	4.00	12.50
	MM	711	1388	102	318

FRAME	UNITS	2F ±.03
444T	IN	14.50
	MM	368
445T	IN	16.50
	MM	419
447T	IN	20.00
	MM	508
449T	IN	25.00
	MM	635

- 1: ALL ROUGH CASTING DIMENSIONS MAY VARY BY .25" DUE TO CASTING AND/OR FABRICATION VARIATIONS.
- 2: LARGEST MOTOR WIDTH.
- 3: TOLERANCES SHOWN ARE IN INCHES ONLY.
- 4: STANDARD ASSEMBLY POSITION F-1 IS SHOWN F-2 IS PROVIDED WHEN SPECIFIED. CONDUIT OPENINGS MAY BE LOCATED IN STEPS OF 90 DEGREES REGARDLESS OF LOCATION. STANDARD AS SHOWN WITH CONDUIT OPENING DOWN.

07-2916/D

**Nidec Motor Corporation**  
St. Louis, Missouri

INFORMATION DISCLOSED ON THIS DOCUMENT IS CONSIDERED PROPRIETARY AND SHALL NOT BE REPRODUCED OR DISCLOSED WITHOUT WRITTEN CONSENT OF NIDEC MOTOR CORPORATION



ISSUED BY  
**R. KING**  
APPROVED BY  
**J. HAGENE**

IHP\_DP\_NMCA (MAR-2011) SOLIDEDGE