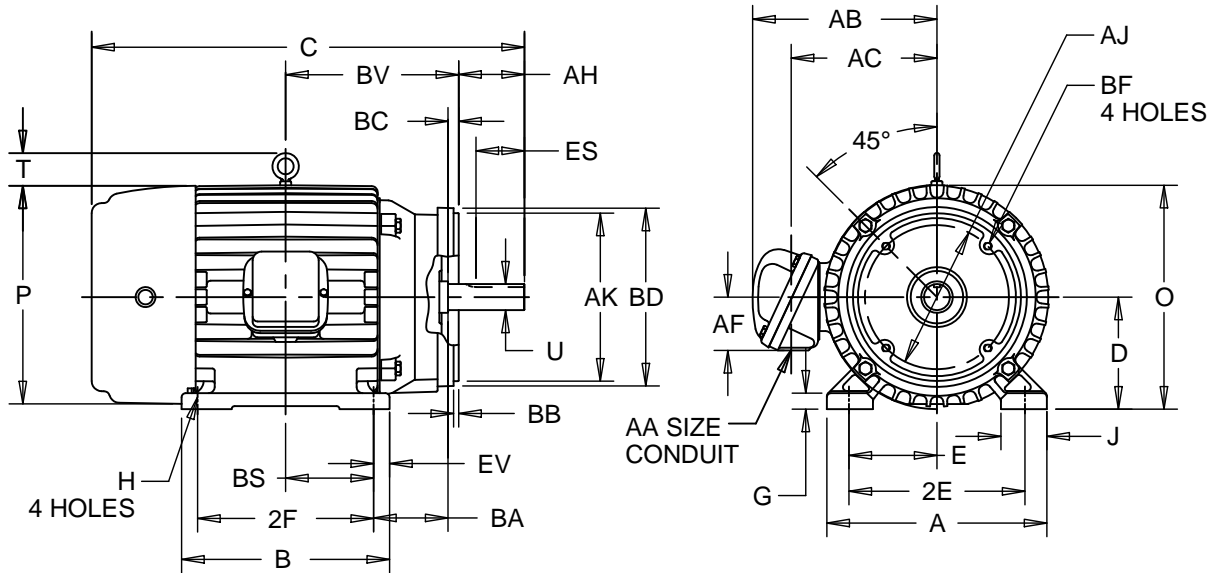


EFFECTIVE:  
**18-APR-11**  
SUPERSEDES:  
**26-NOV-09**

**HORIZONTAL MOTORS**  
WITH NEMA "C" BRACKET  
FRAME: 182, 184TC  
BASIC TYPE: L

PRINT:  
**07-2930**  
SHEET:  
**1 OF 1**



ALL DIMENSIONS ARE IN INCHES AND MILLIMETERS

| UNITS | A    | B      | C      | D<br>-.06 | E     | 2E<br>±.03 | G      | H<br>+.05 | J     | O      |
|-------|------|--------|--------|-----------|-------|------------|--------|-----------|-------|--------|
| IN    | 8.88 | 6.75   | 16.75  | 4.50      | 3.75  | 7.50       | .63    | .41       | 1.50  | 9.38   |
| MM    | 226  | 171.45 | 425.45 | 114.3     | 95.25 | 190.5      | 16.002 | 10.41     | 38.09 | 238.25 |

| UNITS | P <sup>5</sup> | T    | U<br>-.0005 | AA      | AB     | AC     | AF    | AH    | AJ     | AK     | BA    |
|-------|----------------|------|-------------|---------|--------|--------|-------|-------|--------|--------|-------|
| IN    | 9.50           | 1.75 | 1.1250      | .75 NPT | 7.75   | 5.94   | 2.25  | 2.63  | 7.25   | 8.500  | 3.50  |
| MM    | 241.29         | 44   | 28.575      |         | 196.85 | 150.88 | 57.15 | 66.80 | 184.15 | 215.89 | 88.89 |

| UNITS | BB   | BC    | BD<br>MAX | BS   | BF <sup>2</sup> | BV      | ES<br>MIN | EV     | SQ<br>KEY |
|-------|------|-------|-----------|------|-----------------|---------|-----------|--------|-----------|
| IN    | .25  | .13   | 9.00      | 2.75 | 1/2-13 X .75    | 6.38    | 1.78      | .63    | .250      |
| MM    | 6.35 | 3.302 | 228.6     | 70   |                 | 162.052 | 45.212    | 16.002 | 6.35      |

| FRAME | UNITS | 2F<br>±.03 |
|-------|-------|------------|
| 182TC | IN    | 4.50       |
|       | MM    | 114.3      |
| 184TC | IN    | 5.50       |
|       | MM    | 139.7      |

- ALL ROUGH DIMENSIONS MAY VARY BY .25" DUE TO CASTING AND/OR FABRICATION VARIATIONS.
- TAP SIZE AND BOLT PENETRATION ALLOWANCE.
- ALL TAPPED HOLES ARE UNIFIED NATIONAL COARSE, RIGHT HAND THREAD.
- CONDUIT BOX MAY BE LOCATED ON EITHER SIDE OF MOTOR. CONDUIT OPENINGS MAY BE LOCATED IN STEPS OF 90 DEGREES REGARDLESS OF LOCATION. STANDARD AS SHOWN WITH CONDUIT OPENING DOWN.
- LARGEST MOTOR WIDTH.
- TOLERANCES SHOWN ARE IN INCHES ONLY.

| TOLERANCES                                  | 8.500 AK    |
|---|-------------|
| FACE RUNOUT                                 | .004 T.I.R. |
| PERMISSIBLE ECCENTRICITY OF MOUNTING RABBET | .004 T.I.R. |
| PERMISSIBLE SHAFT RUNOUT                    | .002 T.I.R. |
| TOLERANCE ON "AK" DIMENSION                 | -.003       |

07-2930/A ECO 46385-00

**Nidec Motor Corporation**  
St. Louis, Missouri

INFORMATION DISCLOSED ON THIS DOCUMENT IS CONSIDERED PROPRIETARY AND SHALL NOT BE REPRODUCED OR DISCLOSED WITHOUT WRITTEN CONSENT OF NIDEC MOTOR CORPORATION



ISSUED BY  
**L. CUESTA**  
APPROVED BY  
**J. LOZANO**

IHP\_DP\_NMCA (MAR-2011) SOLIDEDGE