

EFFECTIVE:  
**14-DEC-09**

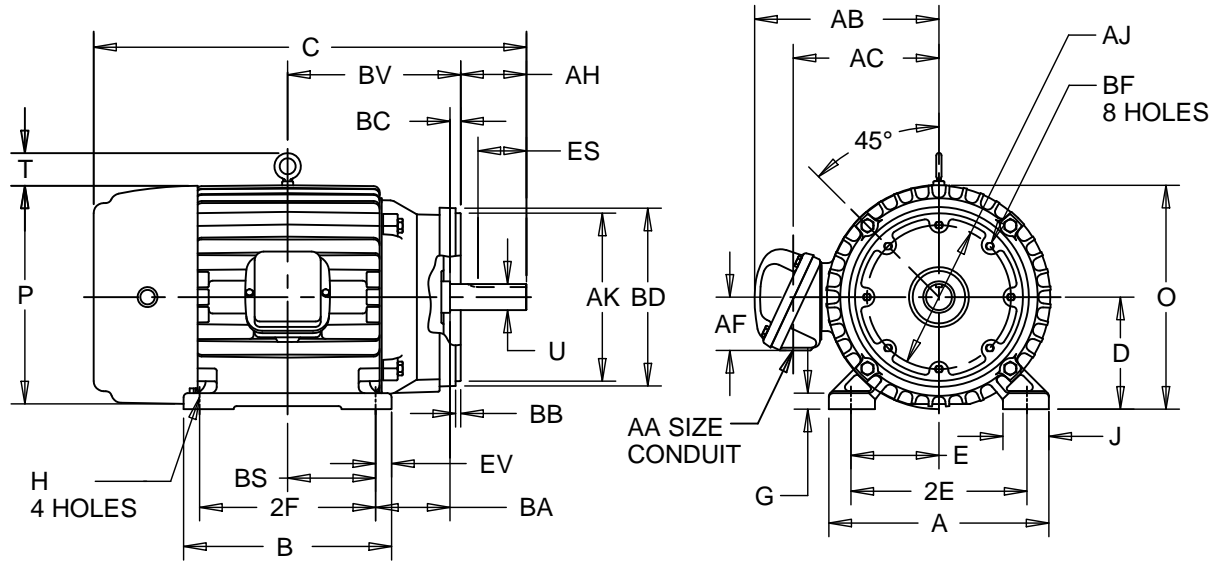
# HORIZONTAL MOTORS WITH NEMA "C" BRACKET

PRINT:  
**07-2932**

SUPERSEDES:  
**NEW**

FRAME:254, 256 TC  
BASIC TYPE: LC, NC

SHEET:  
**1 OF 1**



ALL DIMENSIONS ARE IN INCHES AND MILLIMETERS

UNITS	A	B	C	D -.06	E	2E ±.03	G	H +.05	J	O
IN	12.25	12.00	24.88	6.25	5.00	10.00	.88	.53	2.25	12.94
MM	311	305	632	159	127	254	22	13	57	329

UNITS	P <sup>5</sup>	T	U -.001	AA	AB	AC	AF	AH	AJ	AK	BA
IN	13.38	2.03	1.625	1.5 NPT	11.07	8.22	3.13	3.75	7.25	8.500	4.75
MM	340	52	41.28		281	209	79	95	184	216.90	121

UNITS	BB	BC	BD MAX	BS	BF <sup>2</sup>	BV	ES MIN	EV	SQ KEY
IN	.25	.25	10.00	5.00	1/2-13 X .75	10.00	2.91	1.00	.375
MM	6	6	254	127		254	74	25	9.53

FRAME	UNITS	2F ±.03
254 TC	IN	8.25
	MM	210
256 TC	IN	10.00
	MM	254

- ALL ROUGH DIMENSIONS MAY VARY BY .25" DUE TO CASTING AND/OR FABRICATION VARIATIONS.
- TAP SIZE AND BOLT PENETRATION ALLOWANCE.
- ALL TAPPED HOLES ARE UNIFIED NATIONAL COARSE, RIGHT HAND THREAD.
- CONDUIT BOX MAY BE LOCATED ON EITHER SIDE OF MOTOR. CONDUIT OPENINGS MAY BE LOCATED IN STEPS OF 90 DEGREES REGARDLESS OF LOCATION. STANDARD AS SHOWN WITH CONDUIT OPENING DOWN.
- LARGEST MOTOR WIDTH.
- TOLERANCES SHOWN ARE IN INCHES ONLY.

TOLERANCES	8.5 AK
FACE RUNOUT	.004 T.I.R.
PERMISSIBLE ECCENTRICITY OF MOUNTING RABBET	.004 T.I.R.
PERMISSIBLE SHAFT RUNOUT FOR IEEE841 SHAFT RUNOUT	.002 T.I.R.
TOLERANCE ON "AK" DIMENSION	.001 T.I.R.
	-.003

07-2932/A

**Nidec Motor Corporation**  
St. Louis, Missouri

INFORMATION DISCLOSED ON THIS DOCUMENT IS CONSIDERED PROPRIETARY AND SHALL NOT BE REPRODUCED OR DISCLOSED WITHOUT WRITTEN CONSENT OF NIDEC MOTOR CORPORATION



ECO 46368-00

ISSUED BY  
**L. CUESTA**  
APPROVED BY  
**G. MATA**

IHP\_DP\_NMCA (MAR-2011) SOLIDEDGE