

EFFECTIVE:
03-DEC-12

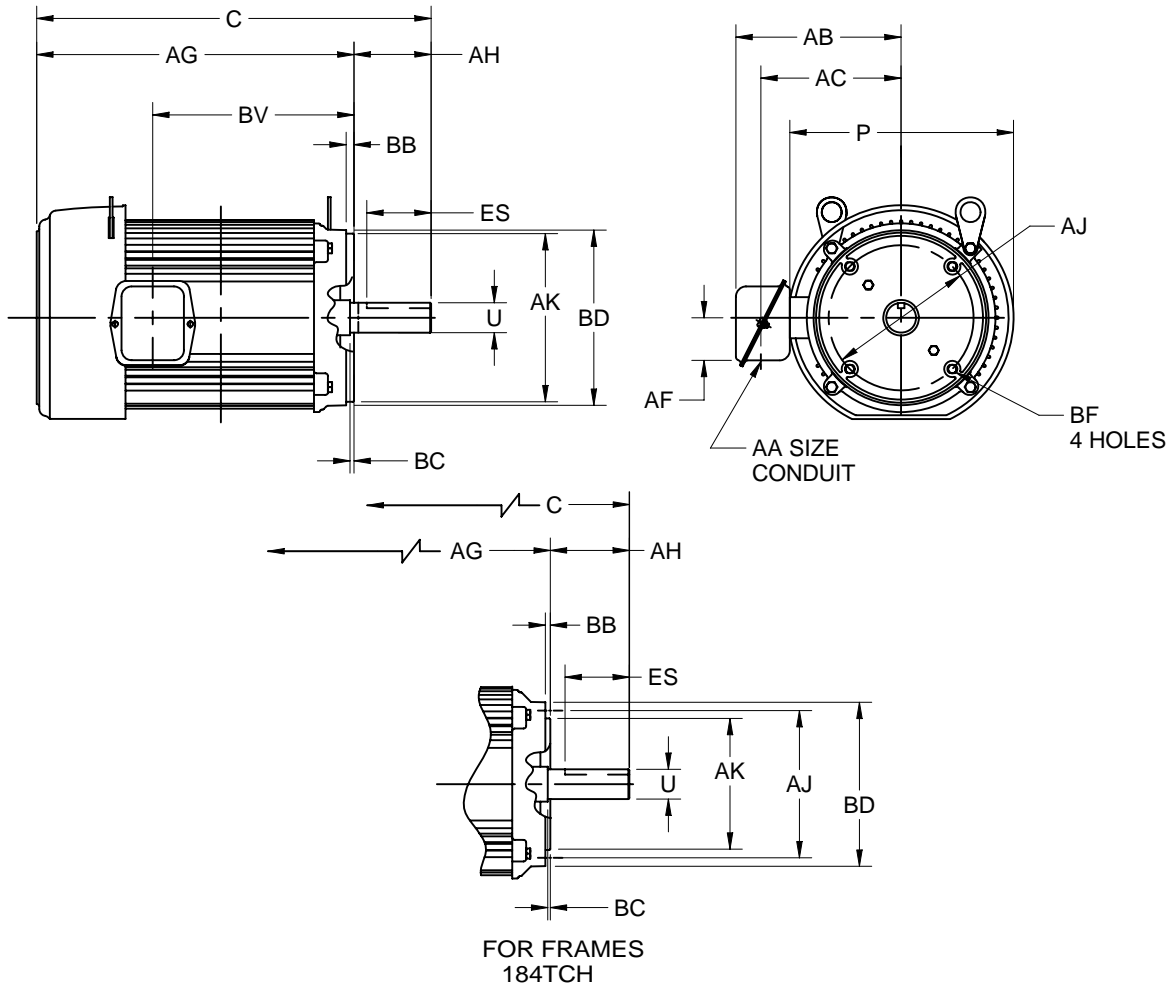
HORIZONTAL MOTORS

UNIMOUNT- FOOTLESS WITH "C" FACE
FRAME: 184TC & 184TCH
BASIC TYPE: UT

PRINT:
07-2979

SUPERSEDES:
02-NOV-12

SHEET:
1 OF 1



ALL DIMENSIONS ARE IN INCHES AND MILLIMETERS

FRAME	UNITS	C	P ²	T	U -.0005	AA	AB	AC	AF	AG	AH	BC
180	IN	16.19	9.56	.38	1.1250	.75	7.50	6.31	2.13	13.50	2.63	.13
	MM	411	243	10	28.575		1.91	160	54	343	67	3

FRAME	UNITS	BV	ES MIN	SQ KEY
180	IN	8.38	1.78	.250
	MM	213	45	6.35

FRAME	UNITS	AJ	AK -.003	BB MIN	BD MAX	BF ³
184TC	IN	7.250	8.500	.25	9.00	1/2-13 X .75
	MM	184.15	215.90	6	229	
184TCH	IN	5.875	4.500	.16	6.50	3/8-16 X .56
	MM	149.23	114.30	4	165	

1. ALL ROUGH DIMENSIONS MAY VARY BY .25" DUE TO CASTING AND/OR FABRICATION VARIATIONS.
2. LARGEST MOTOR WIDTH.
3. CONDUIT BOX MAY BE LOCATED ON EITHER SIDE. CONDUIT OPENINGS MAY BE LOCATED IN STEPS OF 90 DEGREES REGARDLESS OF LOCATION. STANDARD AS SHOWN WITH CONDUIT OPENING DOWN.
4. TAP SIZE AND BOLT PENETRATION ALLOWANCE.
5. ALL TAPPED HOLES ARE UNIFIED NATIONAL COARSE, RIGHT HAND THREAD.
6. TOLERANCES SHOWN ARE IN INCHES ONLY.
7. FRAME REFERENCE: 8.250/184

TOLERANCES	
FACE RUNOUT	.004 T.I.R.
PERMISSIBLE ECCENTRICITY OF MOUNTING RABBET	.004 T.I.R.
PERMISSIBLE SHAFT RUNOUT	.002 T.I.R.

07-2979/C

Nidec Motor Corporation
St. Louis, Missouri

INFORMATION DISCLOSED ON THIS DOCUMENT
IS CONSIDERED PROPRIETARY AND SHALL NOT BE
REPRODUCED OR DISCLOSED WITHOUT WRITTEN
CONSENT OF NIDEC MOTOR CORPORATION



ISSUED BY
R. KING
APPROVED BY
J. O'BRIEN

IHP_DP_NMCA (MAR-2011) SOLIDEDGE