

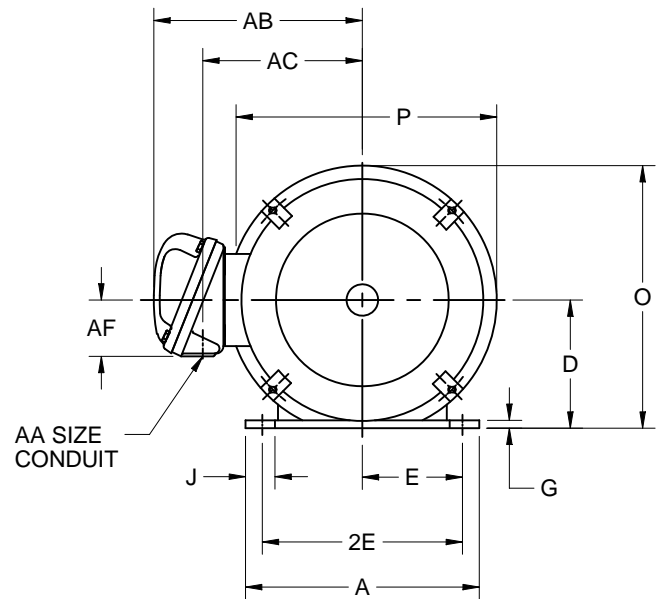
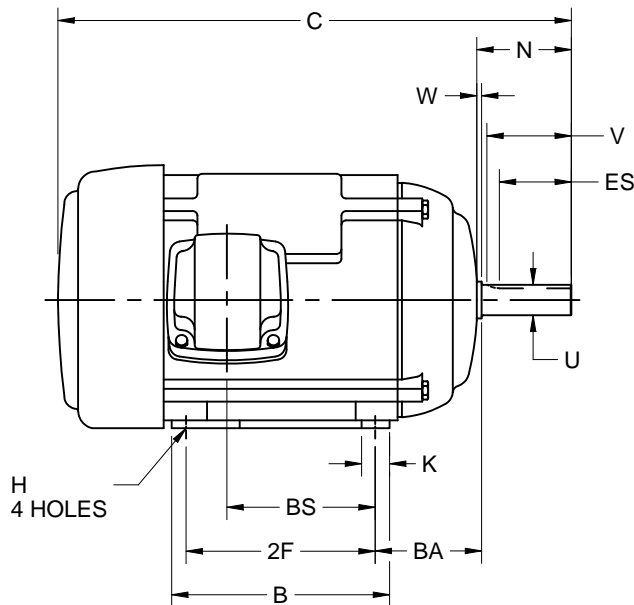
EFFECTIVE:
24-JUL-12

SUPERSEDES:
NEW

HORIZONTAL MOTORS
CAST IRON FRAME, EXPLOSIONPROOF
FRAME: 56
BASIC TYPE: E

PRINT:
07-3020

SHEET:
1 OF 1



ALL DIMENSIONS ARE IN INCHES AND MILLIMETERS

UNITS	A	B	C	D -.06	E	2E ±.03	2F ±.03	G	H	J	K	N
IN	6.50	4.00	11.63	3.50	2.44	4.88	3.00	.16	1-1/4 X 11/32	1.75	1.00	2.06
MM	165	102	295	89	62	124	76	4		44	25	52

UNITS	O	P ²	U -.0005	V MIN	W	AA	AB	AC	AF	BA	BS	ES MIN
IN	7.44	7.75	.6250	1.69	.19	3/4 NPT	6.69	5.19	1.75	2.75	2.75	1.41
MM	189	197	15.88	43	5		170	132	44	70	70	36

UNITS	SQ KEY
IN	.188
MM	4.8

1. ALL ROUGH CASTING DIMENSIONS MAY VARY BY .25"
DUE TO CASTING AND/OR FABRICATION VARIATIONS.

2. LARGEST MOTOR WIDTH.

3. CONDUIT BOX MAY BE LOCATED ON EITHER SIDE
OF MOTOR. CONDUIT OPENINGS MAY BE LOCATED IN
STEPS OF 90 DEGREES REGARDLESS OF LOCATION.
STANDARD AS SHOWN WITH CONDUIT OPENING DOWN.

4. TOLERANCE UNITS ARE IN INCHES ONLY.

Nidec Motor Corporation
St. Louis, Missouri

INFORMATION DISCLOSED ON THIS DOCUMENT
IS CONSIDERED PROPRIETARY AND SHALL NOT BE
REPRODUCED OR DISCLOSED WITHOUT WRITTEN
CONSENT OF NIDEC MOTOR CORPORATION



ISSUED BY
O. GALLEGOS
APPROVED BY
J. MAGALLANES

IHP_DP_NMCA (MAR-2011) SOLIDEDGE