

EFFECTIVE:
04-DEC-13

DIMENSION PRINT

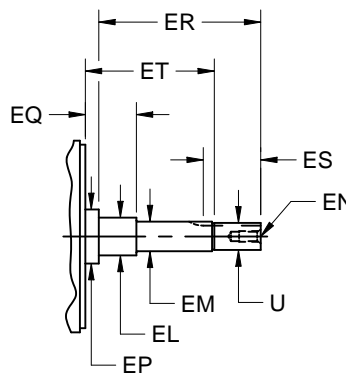
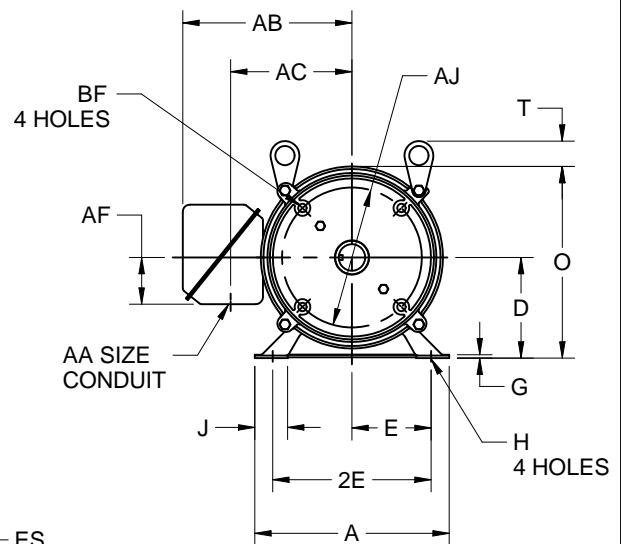
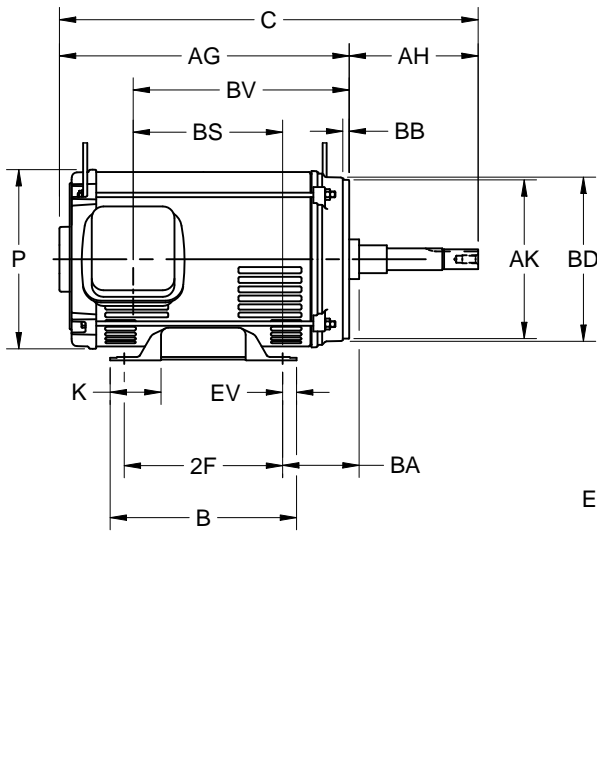
ODP-CLOSE COUPLED PUMP (OVERSIZE)

PRINT:
07-3098

SUPERSEDES:
NEW

FRAME: 250JM
BASIC TYPE: D4

SHEET:
1 OF 1



ALL DIMENSIONS ARE IN INCHES AND MILLIMETERS

| UNITS | A | D -.06 | E | 2E ±.03 | G | H +.05 | J | K | O | P ² | T | U -.0005 |
|-------|-------|-----------|------|------------|-----|-----------|------|------|-------|----------------|------|-------------|
| IN | 11.25 | 6.25 | 5.00 | 10.00 | .19 | .53 | 1.44 | 1.38 | 11.75 | 11.09 | 2.06 | 1.2495 |
| MM | 286 | 159 | 127 | 254 | 5 | 13 | 37 | 35 | 298 | 282 | 52 | 31.737 |

| UNITS | AA | AB | AC | AF | AH ±.031 | AJ | AK -.003 | BA | BB ±.031 | BD MAX | BF ³ | EL -.002 |
|-------|------|--------|-------|------|-------------|--------|-------------|------|-------------|-----------|-----------------|-------------|
| IN | 1.50 | 10.82 | 8.13 | 2.13 | 5.250 | 7.250 | 8.500 | 4.75 | .281 | 10.00 | 1/2-13 X.75 | 1.750 |
| MM | | 274.83 | 206.5 | 54 | 133.35 | 184.15 | 215.90 | 121 | 7.13 | 254 | | 44.45 |

| UNITS | EM -.0005 | EN ³ | EP MIN | EQ ±.015 | ER MIN | ES MIN | ET ±.015 | EV | SQ KEY |
|-------|--------------|-----------------|-----------|-------------|-----------|-----------|-------------|-----|-----------|
| IN | 1.3750 | 1/2-13 X1.00 | 1.75 | .625 | 5.25 | 2.53 | 3.000 | .63 | .250 |
| MM | 34.925 | | 44 | 15.87 | 133 | 64 | 76.20 | 16 | 6.35 |

| FRAME | UNITS | B | C | 2F ±.03 | AG | BS | BV |
|-------|-------|-------|-------|------------|-------|------|-------|
| 254JM | IN | 9.50 | 24.56 | 8.25 | 19.31 | 7.63 | 12.81 |
| | MM | 241 | 624 | 210 | 490 | 194 | 325 |
| 256JM | IN | 11.25 | 25.19 | 10.00 | 19.94 | 8.25 | 13.44 |
| | MM | 286 | 640 | 254 | 506 | 210 | 341 |

| TOLERANCES | |
|---|-------------|
| FACE RUNOUT | .004 T.I.R. |
| PERMISSIBLE ECCENTRICITY OF MOUNTING RABBET | .004 T.I.R. |
| PERMISSIBLE SHAFT RUNOUT | .002 T.I.R. |

- ALL ROUGH CASTING DIMENSIONS MAY VARY BY .25 IN DUE TO CASTING AND OR FABRICATION VARIATIONS.
- LARGEST MOTOR WIDTH.
- TAP SIZE AND BOLT PENETRATION ALLOWANCE.
- ALL TAPPED HOLES ARE UNIFIED NATIONAL COARSE, RIGHT HAND THREAD.

- CONDUIT BOX MAY BE LOCATED ON EITHER SIDE AND CONDUIT OPENING MAY BE LOCATED IN STEPS OF 90 DEGREES REGARDLESS OF LOCATION. STANDARD AS SHOWN WITH CONDUIT OPENING DOWN.
- TOLERANCES SHOWN ARE IN INCHES ONLY.
- FRAME REFERENCE: 10.530/213//12.030/215
11.125/254//11.750/256

Nidec Motor Corporation
St. Louis, Missouri

INFORMATION DISCLOSED ON THIS DOCUMENT IS CONSIDERED PROPRIETARY AND SHALL NOT BE REPRODUCED OR DISCLOSED WITHOUT WRITTEN CONSENT OF NIDEC MOTOR CORPORATION



ISSUED BY
M. YRISSON
APPROVED BY
M. OLVERA

IHP_DP_NMCA (MAR-2011) SOLIDEDGE