

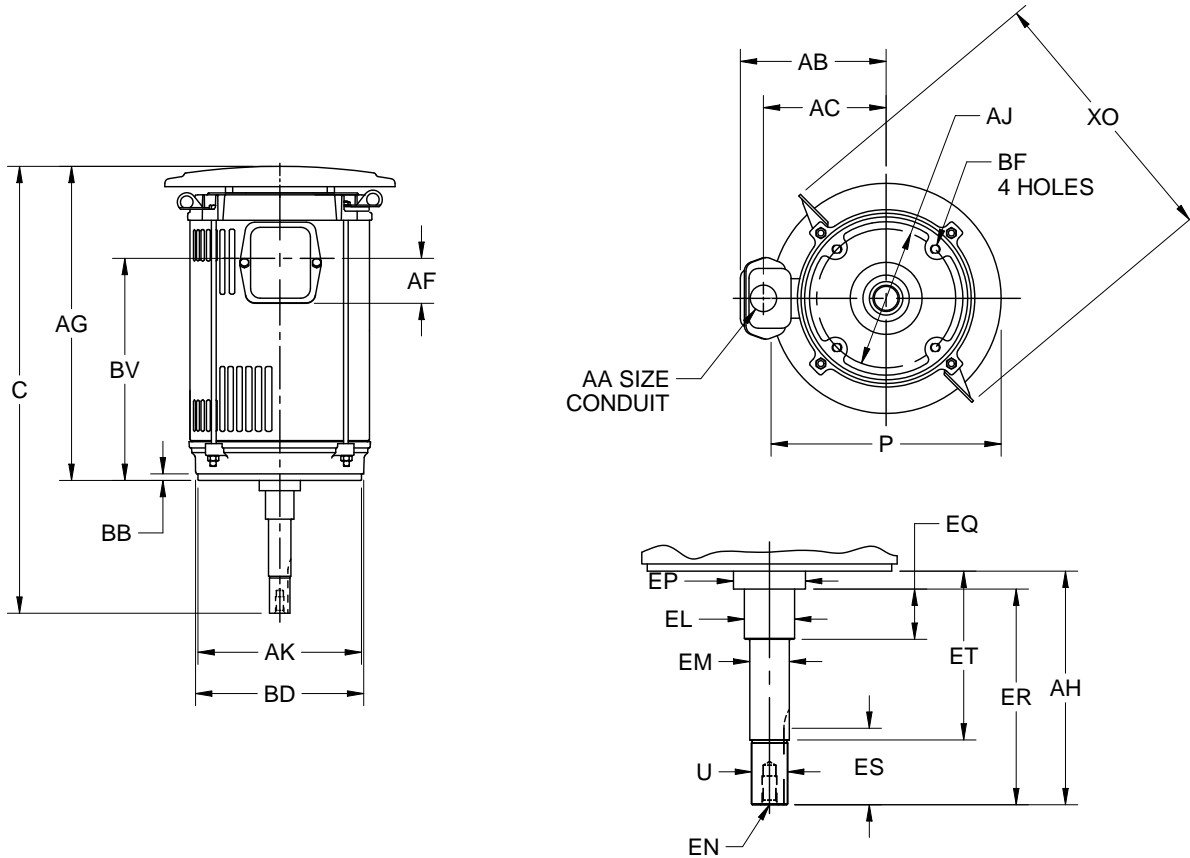
EFFECTIVE:  
**04-DEC-13**

**DIMENSION PRINT**  
CLOSE-COUPLED PUMP (VERTICAL MOUNTING) OVERSIZE  
FRAME: 210JP  
BASIC TYPE: DEF-1, FDF-1

PRINT:  
**07-3099**

SUPERSEDES:  
**NEW**

SHEET:  
**1 OF 1**



ALL DIMENSIONS ARE IN INCHES AND MILLIMETERS

UNITS	P <sup>2</sup>	U -.0005	AA	AB	AC	AF	AH ±.031	AJ	AK -.005	BB ±.031	BD MAX	BF <sup>3</sup>
IN	12.13	1.2495	1.00	8.25	6.59	2.63	8.125	7.250	8.500	.281	9.00	1/2-13 X .75
MM	308	31.737		210	167	68	206.38	184.15	215.90	7.14	229	

UNITS	EL -.002	EM -.0005	EN <sup>3</sup>	EP MIN	EQ ±.015	ER MIN	ES MIN	ET ±.015	XO	SQ KEY
IN	1.750	1.3750	1/2-13X1.00	1.75	2.375	8.13	2.63	5.875	13.63	.250
MM	44.45	34.925		44	60.33	207	67	149.23	346	6.35

FRAME	UNITS	C	AG	BV
213JP	IN	22.63	14.50	11.06
	MM	574	368	281
215JP	IN	24.13	16.00	12.56
	MM	613	406	319

TOLERANCES	
FACE RUNOUT	.004 T.I.R.
PERMISSIBLE ECCENTRICITY OF MOUNTING RABBET	.004 T.I.R.
PERMISSIBLE SHAFT RUNOUT	.002 T.I.R.

1. ALL ROUGH DIMENSIONS MAY VARY BY .25 IN DUE TO CASTING AND/OR FABRICATION VARIATIONS.
2. LARGEST MOTOR WIDTH.
3. TAP SIZE AND BOLT PENETRATION ALLOWANCE.
4. ALL TAPPED HOLES ARE UNIFIED NATIONAL COARSE, RIGHT HAND THREAD.
5. CONDUIT BOX MAY BE LOCATED ON EITHER SIDE. CONDUIT OPENINGS MAY BE LOCATED IN STEPS OF 90 DEGREES REGARDLESS OF LOCATION. STANDARD AS SHOWN WITH CONDUIT OPENING DOWN.
6. TOLERANCES SHOWN ARE IN INCHES ONLY.
7. FRAME REFERENCE: 10.53/213//12.03/215.

**Nidec Motor Corporation**  
St. Louis, Missouri

INFORMATION DISCLOSED ON THIS DOCUMENT IS CONSIDERED PROPRIETARY AND SHALL NOT BE REPRODUCED OR DISCLOSED WITHOUT WRITTEN CONSENT OF NIDEC MOTOR CORPORATION



ISSUED BY  
**M. YRISSE**  
APPROVED BY  
**M. OLVERA**

IHP\_DP\_NMCA (MAR-2011) SOLIDEDGE