

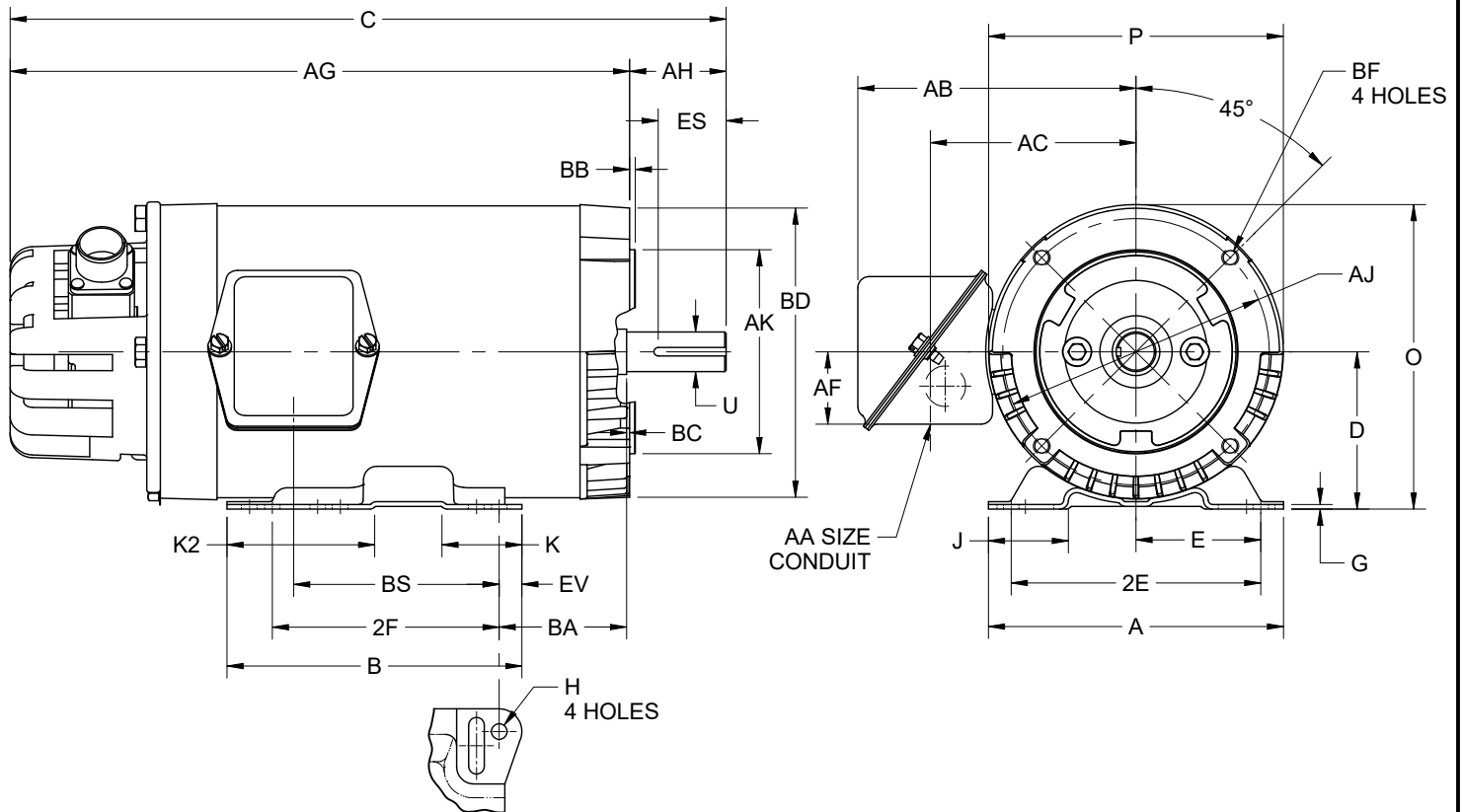
EFFECTIVE:
30-OCT-23

SUPERSEDES:
03-MAR-22

DIMENSION PRINT
UNIMOUNT VECTOR DUTY, ENCODER HS35A
FRAME: 145TC
BASIC TYPE: UTX

PRINT:
07-3118-02

SHEET:
1 OF 1



ALL DIMENSIONS ARE IN INCHES AND MILLIMETERS

UNITS	A	B	C	D -.06	E	2E ±.03	2F ±.03	G	H +.05	J	K	K2	O
IN	6.50	6.50	17.65	3.50	2.75	5.50	5.00	.13	.34	1.75	1.75	3.25	6.75
MM	165	165	449	89	70	140	127	3	9	44	44	83	171

UNITS	P ²	U -.0005	AA ⁵	AB	AC	AF	AG	AH	AJ	AK -.003	BA	BB MIN	BC
IN	6.50	.8750		6.13	4.53	1.59	15.52	2.13	5.875	4.500	2.75	.13	.13
MM	165	22.225	.75	156	115	40	394	54	149.23	114.30	70	3	3

UNITS	BD MAX	BF ^{3,4}	BS	ES MIN	EV	SQ KEY
IN	6.50		5.53	1.41	.50	.188
MM	165	3/8-16 X .75	140	36	13	4.78

- DIMENSIONS MAY VARY .25" DUE TO CASTING AND/OR FABRICATION VARIATIONS
- LARGEST MOTOR WIDTH
- ALL TAP HOLES ARE UNIFIED NATIONAL COARSE, RIGHT HAND THREAD
- TAP SIZE AND BOLT PENETRATION ALLOWANCE
- BASIC CONDUIT FITTING SIZE. HOLE OPENING ON THE SIDE OF THE CONDUIT BOX (REPRESENTED BY A DASHED CIRCLE) WILL ACCEPT A .50 BASIC CONDUIT FITTING
- THE CONDUIT BOX MAY BE LOCATED ON EITHER SIDE OF THE MOTOR. THE CONDUIT OPENING(S) MAY BE LOCATED IN STEPS OF 180° REGARDLESS OF LOCATION. STANDARD LOCATION IS SHOWN WITH THE CONDUIT OPENING DOWN
- TOLERANCES ARE SHOWN IN INCHES ONLY
- FRAME REFERENCE; 8.00/1 AND 1.5 HP AND 9.00/2 HP

TOLERANCES	
FACE RUNOUT	.004 TIR
PERMISSIBLE ECCENTRICITY OF MOUNTING RABBET	.004 TIR
PERMISSIBLE SHAFT RUNOUT	.002 TIR

07-3118-02/A

Nidec Motor Corporation
St. Louis, Missouri

INFORMATION DISCLOSED ON THIS DOCUMENT
IS CONSIDERED PROPRIETARY AND SHALL NOT BE
REPRODUCED OR DISCLOSED WITHOUT WRITTEN
CONSENT OF NIDEC MOTOR CORPORATION



ISSUED BY
E.OVIEDO
APPROVED BY
T.PALLET

IHP_DP_NMCA (MAR-2011) SOLIDEDGE