

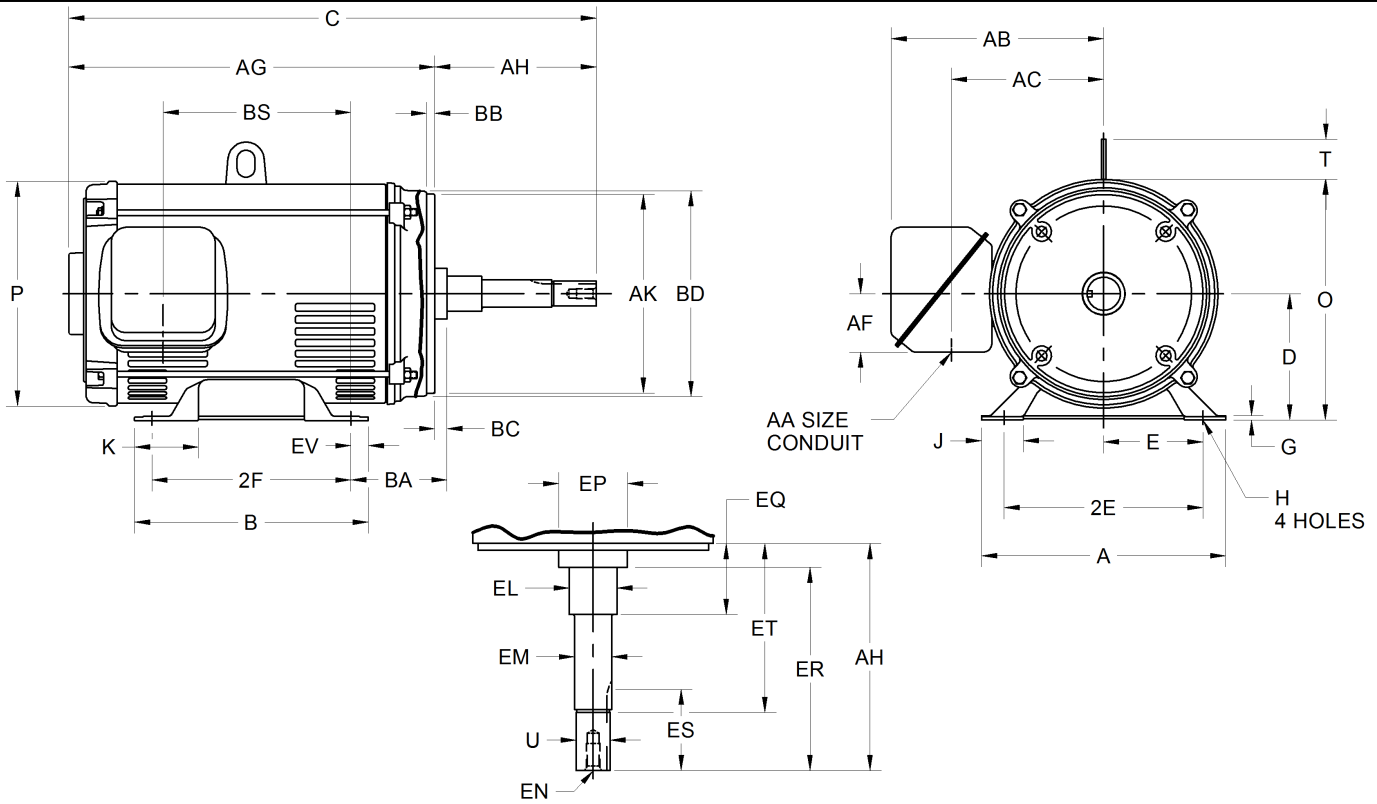
EFFECTIVE:
29-JAN-16

DIMENSION PRINT
ODP - CCP AND OVERSIZE O/B
FRAME: 324, 326JM
BASIC TYPE: D4

PRINT:
07-3240

SUPERSEDES:
NEW

SHEET:
1 OF 1



ALL DIMENSIONS ARE IN INCHES AND MILLIMETERS

UNITS	A	B	C	D -.06	E	2E ±.03	G	H +.05	J	K	O	P ²
IN	15.00	13.94	27.50	8.00	6.25	12.50	.25	.69	2.31	3.53	15.16	14.19
MM	381	354	699	203	159	318	6	18	59	90	385	360

UNITS	T	U -.0005	AA	AB	AC	AF	AG	AH ±.031	AJ	AK -.005	BA	BB -.063
IN	2.38	1.2495	3.00	14.75	10.50	3.38	22.25	5.250	11.000	12.500	5.25	.313
MM	60	31.74		375	267	86	565	133.35	279.40	317.50	133	7.95

UNITS	BC	BD MAX	BF	EL -.002	EM -.0005	EN	EP MIN	EQ ±.015	ER MIN	ES MIN	ET ±.015	EV
IN	.25	14.00	5/8-11X1.38	1.750	1.3750	1/2-13X1.00	2.25	.625	5.50	2.53	3.000	.97
MM	6	356		44.45	34.925		57	15.88	140	64	76.20	25

UNITS	SQ KEY
IN	.250
MM	6.35

UNITS	BS	
	F-1	F-2
IN	11.50	.50
MM	292	13

FRAME	UNITS	2F ±.03
324	IN	10.50
	MM	267
326	IN	12.00
	MM	305

- ALL ROUGH CASTING DIMENSIONS MAY VARY BY .25" DUE TO CASTING AND/OR FABRICATION VARIATIONS.
- LARGEST MOTOR WIDTH.
- CONDUIT BOX MAY BE LOCATED ON EITHER SIDE OF MOTOR. CONDUIT OPENINGS MAY BE LOCATED IN STEPS OF 90 DEGREES REGARDLESS OF LOCATION. STANDARD AS SHOWN WITH CONDUIT OPENING DOWN.
- FRAME REFERENCE: 16.75"/324/326.

TOLERANCES	
FACE RUNOUT	.007 T.I.R.
PERMISSIBLE ECCENTRICITY OF MOUNTING RABBET	.007 T.I.R.
PERMISSIBLE SHAFT RUNOUT	.003 T.I.R.

Nidec Motor Corporation
St. Louis, Missouri

INFORMATION DISCLOSED ON THIS DOCUMENT IS CONSIDERED PROPRIETARY AND SHALL NOT BE REPRODUCED OR DISCLOSED WITHOUT WRITTEN CONSENT OF NIDEC MOTOR CORPORATION



ISSUED BY
F. CRUZ
APPROVED BY
E. ROBINSON

IHP_DP_NMCA (MAR-2011) SOLIDEDGE