

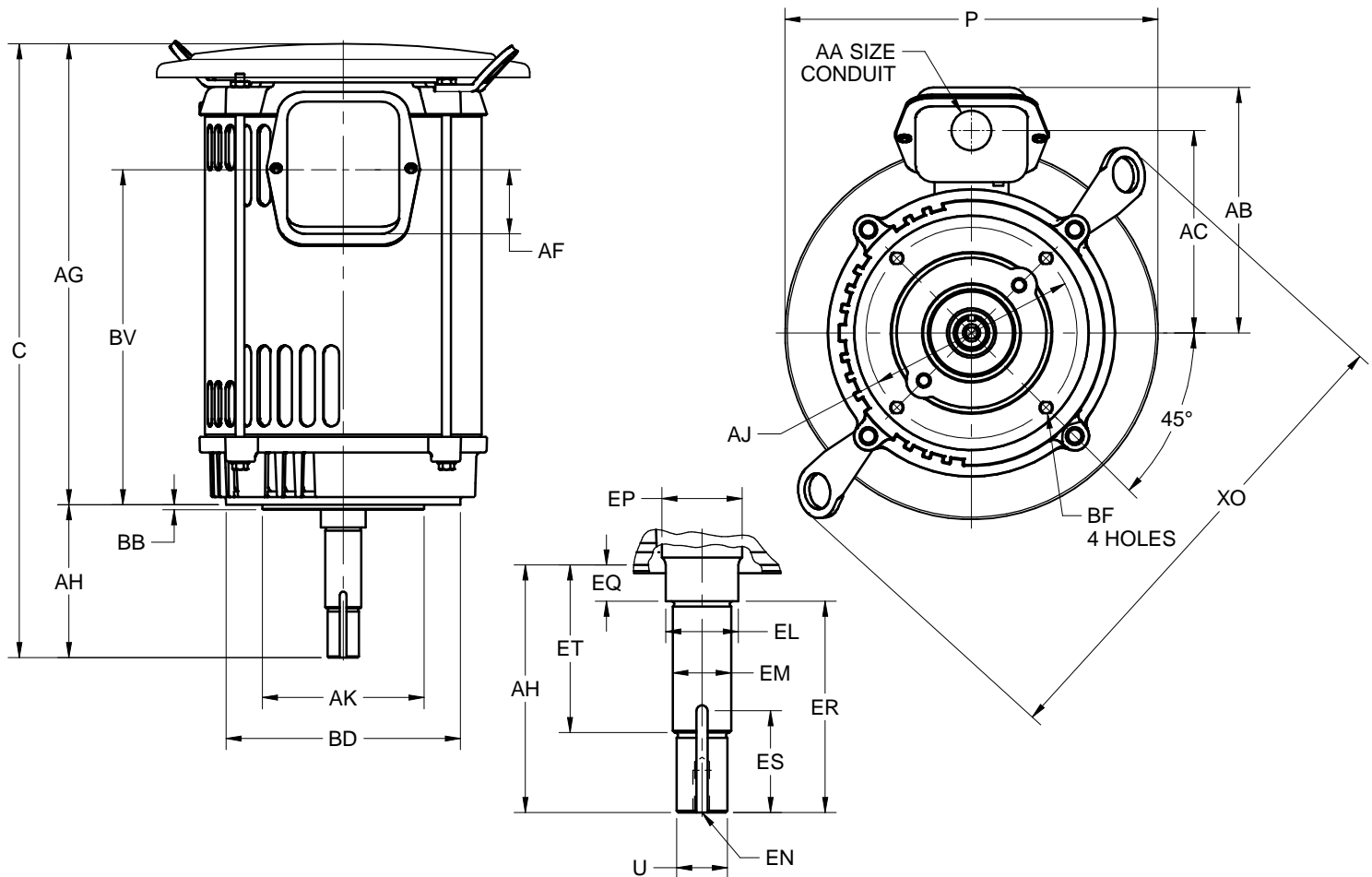
EFFECTIVE:
20-JUN-16

SUPERSEDES:
18-MAR-16

DIMENSION PRINT
OPEN DRIP PROOF CLOSE-COUPLED PUMP WITH CANOPY CAP
 FRAME: 182, 184JM, JP
 BASIC TYPE: DF4, DF1

PRINT:
07-3244

SHEET:
1 OF 1



ALL DIMENSIONS ARE IN INCHES AND MILLIMETERS

| UNITS | P ² | U -.0005 | AA | AB | AC | AF | AG | AJ | AK -.003 | BB -.031 | BD MAX |
|-------|----------------|-------------|-----|------|------|------|-------|--------|-------------|-------------|-----------|
| IN | 10.38 | .8745 | .75 | 6.88 | 5.63 | 2.13 | 12.84 | 5.875 | 4.500 | .156 | 6.50 |
| MM | 264 | 22.212 | | 175 | 143 | 54 | 326 | 149.23 | 114.30 | 3.96 | 165 |

| UNITS | BF ^{3,4} | BV | EL -.002 | EM -.0005 | EN ^{3,4} | EP MIN | ES MIN | XO | SQ KEY |
|-------|-------------------|------|-------------|--------------|-------------------|-----------|-----------|-------|--------|
| IN | 3/8-16 X .56 | 9.59 | 1.250 | 1.0000 | 3/8-16 X .75 | 1.25 | 1.66 | 13.56 | .188 |
| MM | | 244 | 31.75 | 25.400 | | 32 | 42 | 344 | 4.78 |

| FRAME | UNITS | C | AH ±.031 | EQ ±.015 | ER MIN | ET ±.015 |
|-------|-------|-------|-------------|-------------|-----------|-------------|
| 180JM | IN | 17.09 | 4.250 | .625 | 4.25 | 2.875 |
| | MM | 434 | 107.95 | 15.88 | 108 | 73.03 |
| 180JP | IN | 20.16 | 7.313 | 1.563 | 7.31 | 5.938 |
| | MM | 512 | 185.75 | 39.70 | 186 | 150.83 |

- DIMENSIONS MAY VARY .25" DUE TO CASTING AND/OR FABRICATION VARIATIONS
- LARGEST MOTOR WIDTH
- ALL TAP HOLES ARE UNIFIED NATIONAL COARSE, RIGHT HAND THREAD
- TAP SIZE AND BOLT PENETRATION ALLOWANCE
- STANDARD ASSEMBLY POSITION F-1 IS SHOWN. F-2 IS PROVIDED WHEN SPECIFIED. CONDUIT OPENINGS MAY BE LOCATED IN STEPS OF 90° REGARDLESS OF THE LOCATION. STANDARD AS SHOWN WITH CONDUIT OPENING DOWN
- TOLERANCES ARE SHOWN IN INCHES ONLY
- FRAME REFERENCE: 9.250/182/184

| TOLERANCES | |
|---|----------|
| FACE RUNOUT | .004 TIR |
| PERMISSIBLE ECCENTRICITY OF MOUNTING RABBIT | .004 TIR |
| PERMISSIBLE SHAFT RUNOUT | .002 TIR |

07-3244/A

Nidec Motor Corporation
 St. Louis, Missouri

INFORMATION DISCLOSED ON THIS DOCUMENT IS CONSIDERED PROPRIETARY AND SHALL NOT BE REPRODUCED OR DISCLOSED WITHOUT WRITTEN CONSENT OF NIDEC MOTOR CORPORATION



ISSUED BY
R. TIMMERMANN
 APPROVED BY
M. CULLEN

IHP_DP_NMCA (MAR-2011) SOLIDEDGE