

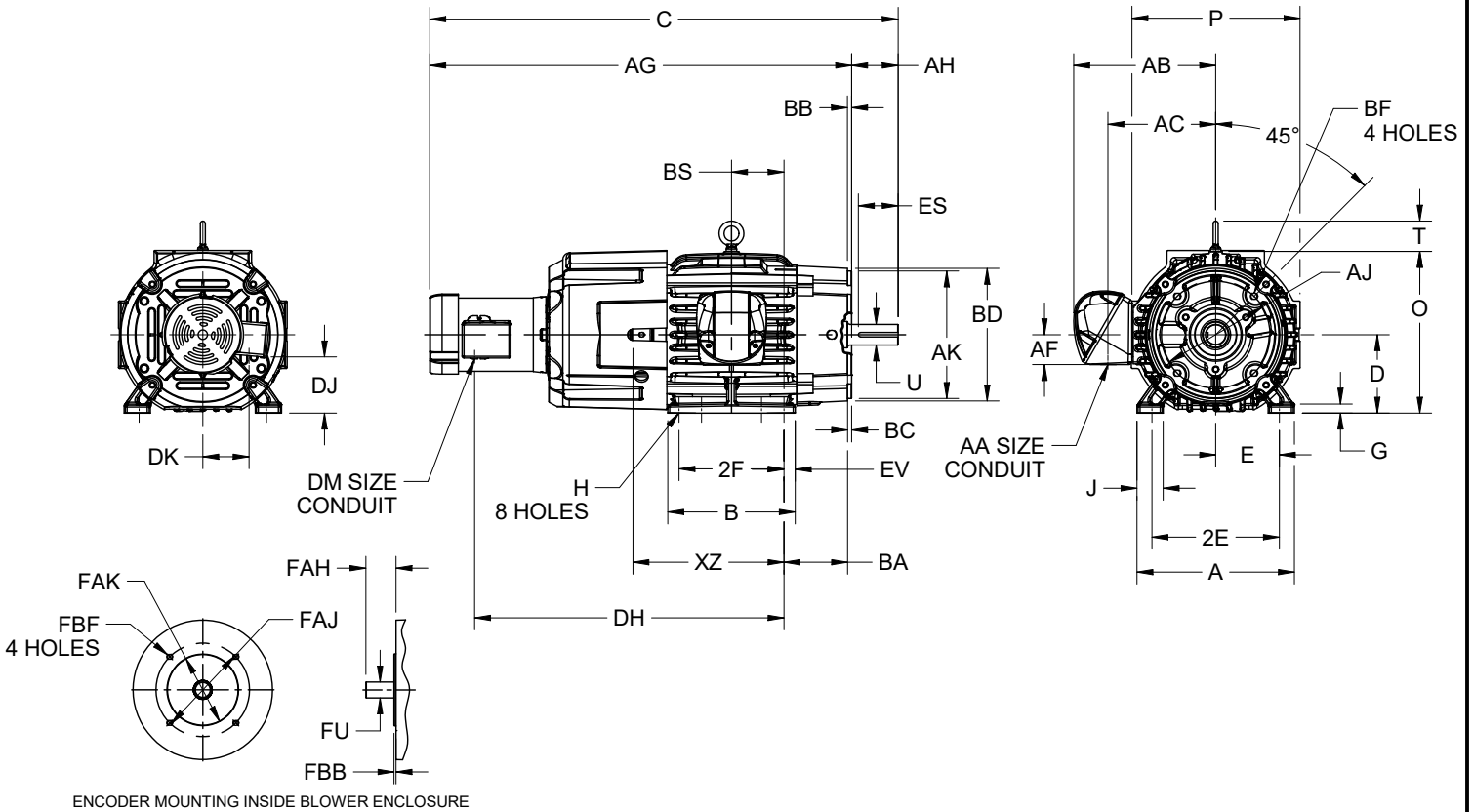
EFFECTIVE:
18-MAR-21

SUPERSEDES:
01-JUL-20

DIMENSION PRINT
TEBC (AXIAL)
FRAME: 210TC
BASIC TYPE: TCB, TCBI

PRINT:
07-3262

SHEET:
1 OF 1



ALL DIMENSIONS ARE IN INCHES AND MILLIMETERS

UNITS	A	B	C	D -.06	E	2E ±.03	G	H +.05	J	O	P ²	U -.001
IN	10.50	8.50	31.25	5.23	4.25	8.50	.60	.41	1.75	10.79	11.22	1.375
MM	267	216	794	133	108	216	16	10	44	275	285	34.93

UNITS	T	AA	AB	AC	AF	AG	AH	AJ	AK -.003	BA	BB MIN	BC
IN	2.02	1.00 NPT	9.47	7.19	2.00	28.13	3.13	7.250	8.500	4.24	.28	.27
MM	52		241	183	51	715	80	184.15	215.90	108	7	7

UNITS	BD MAX	BF ^{3,4}	BS	DH	DJ	DK	DM	ES MIN	EV	FU -.0005	FAH	FAJ
IN	9.00	1/2-13 X 1.06	3.50	20.64	3.75	3.09	.50	2.41	.75	1.0000	1.88	5.875
MM	229		89	524	95	78		61	19	25.400	48	149.22

UNITS	FAK -.002	FBB MAX	FBF ^{3,4}	SQ KEY	XZ
IN	4.500	.16	3/8-16 X .56	.313	10.07
MM	114.30	4		7.95	256

FRAME	UNITS	2F ±.03
213TC	IN	4.00
	MM	102
215TC	IN	7.00
	MM	178

TOLERANCES	
FACE RUNOUT	.004 T.I.R.
PERMISSIBLE ECCENTRICITY OF MOUNTING RABBET	.004 T.I.R.
PERMISSIBLE SHAFT RUNOUT	.002 T.I.R.

1. DIMENSIONS MAY VARY .25" DUE TO CASTING AND/OR FABRICATION VARIATIONS.
2. LARGEST MOTOR WIDTH.
3. ALL TAP HOLES ARE UNIFIED NATIONAL COARSE, RIGHT HAND THREAD.
4. TAP SIZE AND BOLT PENETRATION ALLOWANCE.
5. STANDARD ASSEMBLY POSITION F-1 IS SHOWN. F-2 IS PROVIDED WHEN SPECIFIED. CONDUIT OPENINGS MAY BE LOCATED IN STEPS OF 90 DEGREES REGARDLESS OF THE LOCATION.
6. TOLERANCES ARE SHOWN IN INCHES ONLY.

Nidec Motor Corporation
St. Louis, Missouri

INFORMATION DISCLOSED ON THIS DOCUMENT IS CONSIDERED PROPRIETARY AND SHALL NOT BE REPRODUCED OR DISCLOSED WITHOUT WRITTEN CONSENT OF NIDEC MOTOR CORPORATION



ISSUED BY
L. ARROYO
APPROVED BY
F. LARA

IHP_DP_NMCA (MAR-2011) SOLIDEDGE