

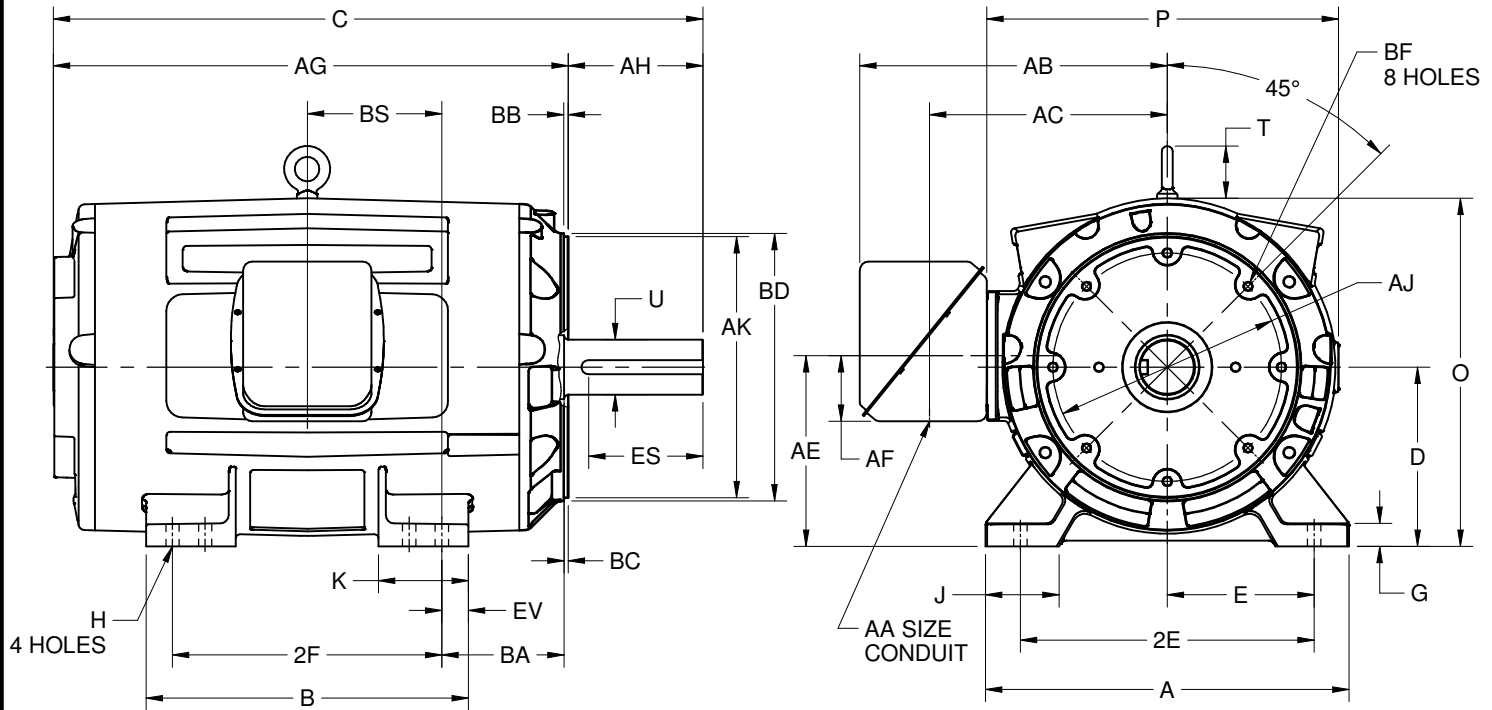
EFFECTIVE:
27-SEP-18

SUPERSEDES:
17-OCT-17

DIMENSION PRINT
OPEN DRIP PROOF C-FACE WITH STEEL MAIN OUTLET BOX
FRAME: 444, 445TSC AND 444, 445TC
BASIC TYPE: R

PRINT:
07-3306

SHEET:
1 OF 1



ALL DIMENSIONS ARE IN INCHES AND MILLIMETERS

UNITS	A	B	D -.06	E	2E ±.03	G	H +.05	J	K	O	P ²	T
IN	22.28	19.75	11.00	9.00	18.00	1.38	.81	4.50	5.50	21.34	21.56	3.25
MM	566	502	279	229	457	35	21	114	140	542	548	83

UNITS	AA	AB	AC	AE	AF	AG	AJ	AK -.003	BA	BB MIN	BC	BD MAX
IN	3.00	18.88	14.63	11.69	4.72	31.56	14.000	16.000	7.50	.25	.25	18.00
MM		480	372	297	119	802	355.60	406.40	191	6	6	457

UNITS	BF ^{3,4}	BS	EV
IN	5/8-11 X .94	8.25	1.63
MM		210	41

FRAME	UNITS	C	2F ±.03	U -.001	AH	ES MIN	SQ KEY
444TSC	IN	36.06	14.50	2.375	4.50	3.03	.625
	MM	916	368	60.33	114	77	15.88
444TC	IN	39.81	14.50	3.375	8.25	6.91	.875
	MM	1011	368	85.73	210	176	22.23
445TSC	IN	36.06	16.50	2.375	4.50	3.03	.625
	MM	916	419	60.33	114	77	15.88
445TC	IN	39.81	16.50	3.375	8.25	6.91	.875
	MM	1011	419	85.73	210	176	22.23

TOLERANCES	
FACE RUNOUT	.007 TIR
PERMISSIBLE ECCENTRICITY OF MOUNTING RABBET	.007 TIR
PERMISSIBLE SHAFT RUNOUT	.003 TIR

1. DIMENSIONS MAY VARY .25" DUE TO CASTING AND/OR FABRICATION VARIATIONS.
2. LARGEST MOTOR WIDTH.
3. ALL TAP HOLES ARE UNIFIED NATIONAL COARSE, RIGHT HAND THREAD.
4. TAP SIZE AND BOLT PENETRATION ALLOWANCE.
5. STANDARD ASSEMBLY POSITION F-1 IS SHOWN. F-2 IS PROVIDED WHEN SPECIFIED. CONDUIT OPENING MAY BE LOCATED IN STEPS OF 90 DEGREES REGARDLESS OF THE LOCATION.
6. TOLERANCES ARE SHOWN IN INCHES ONLY.
7. MOTOR HAS "DUAL" H MOUNTING HOLES (TOTAL 8 HOLES).

07-3306/C

Nidec Motor Corporation
St. Louis, Missouri

INFORMATION DISCLOSED ON THIS DOCUMENT IS CONSIDERED PROPRIETARY AND SHALL NOT BE REPRODUCED OR DISCLOSED WITHOUT WRITTEN CONSENT OF NIDEC MOTOR CORPORATION



ISSUED BY
R. KING
 APPROVED BY
J. O'BRIEN

IHP_DP_NMCA (MAR-2011) SOLIDEDGE