

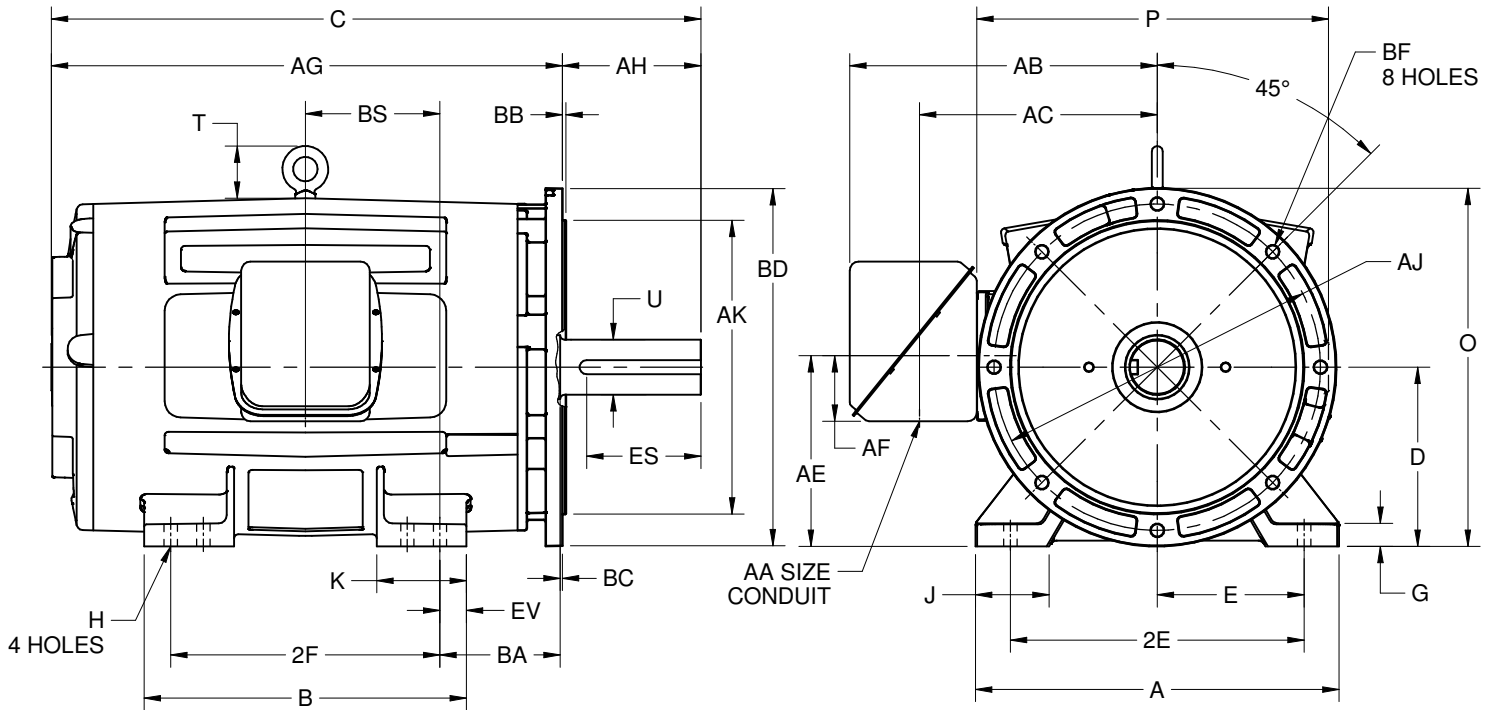
EFFECTIVE:
27-SEP-18

SUPERSEDES:
17-OCT-17

DIMENSION PRINT
OPEN DRIP PROOF D-FLANGE WITH STEEL MAIN OUTLET BOX
FRAME: 444, 445TSD AND 444, 445TD
BASIC TYPE: R

PRINT:
07-3311

SHEET:
1 OF 1



ALL DIMENSIONS ARE IN INCHES AND MILLIMETERS

UNITS	A	B	D -.06	E	2E ±.03	G	H +.05	J	K	O	P ²	T
IN	22.28	19.75	11.00	9.00	18.00	1.38	.81	4.50	5.50	21.97	21.56	3.25
MM	566	502	279	229	457	35	21	114	140	558	548	83

UNITS	AA	AB	AC	AE	AF	AG	AJ	AK -.005	BA	BB MIN	BC	BD MAX
IN	3.00	18.88	14.63	11.69	4.72	31.31	20.000	18.000	7.50	.25	0	22.00
MM	3.00	480	372	297	119	795	508.00	457.20	191	6	0	559

UNITS	BE	BF	BS	EV
IN	1.00	.81	8.25	1.63
MM	25	21	210	41

FRAME	UNITS	C	2F ±.03	U -.001	AH	ES MIN	SQ KEY
444TSD	IN	36.06	14.50	2.375	4.75	3.03	.625
	MM	916	368	60.33	121	77	15.88
444TD	IN	39.81	14.50	3.375	8.50	6.91	.875
	MM	1011	368	85.73	216	176	22.23
445TSD	IN	36.06	16.50	2.375	4.75	3.03	.625
	MM	916	419	60.33	121	77	15.88
445TD	IN	39.81	16.50	3.375	8.50	6.91	.875
	MM	1011	419	85.73	216	176	22.23

TOLERANCES	
FACE RUNOUT	.007 TIR
PERMISSIBLE ECCENTRICITY OF MOUNTING RABBET	.007 TIR
PERMISSIBLE SHAFT RUNOUT	.003 TIR

1. DIMENSIONS MAY VARY .25" DUE TO CASTING AND/OR FABRICATION VARIATIONS.
2. LARGEST MOTOR WIDTH.
3. STANDARD ASSEMBLY POSITION F-1 IS SHOWN. F-2 IS PROVIDED WHEN SPECIFIED. CONDUIT OPENING MAY BE LOCATED IN STEPS OF 90 DEGREES REGARDLESS OF THE LOCATION.
4. TOLERANCES ARE SHOWN IN INCHES ONLY.
5. MOTOR HAS "DUAL" H MOUNTING HOLES (TOTAL 8 HOLES).

07-3311/C

Nidec Motor Corporation
St. Louis, Missouri

INFORMATION DISCLOSED ON THIS DOCUMENT IS CONSIDERED PROPRIETARY AND SHALL NOT BE REPRODUCED OR DISCLOSED WITHOUT WRITTEN CONSENT OF NIDEC MOTOR CORPORATION



ISSUED BY
R. KING
 APPROVED BY
J. O'BRIEN

IHP_DP_NMCA (MAR-2011) SOLIDEDGE