

EFFECTIVE:
19-DEC-17

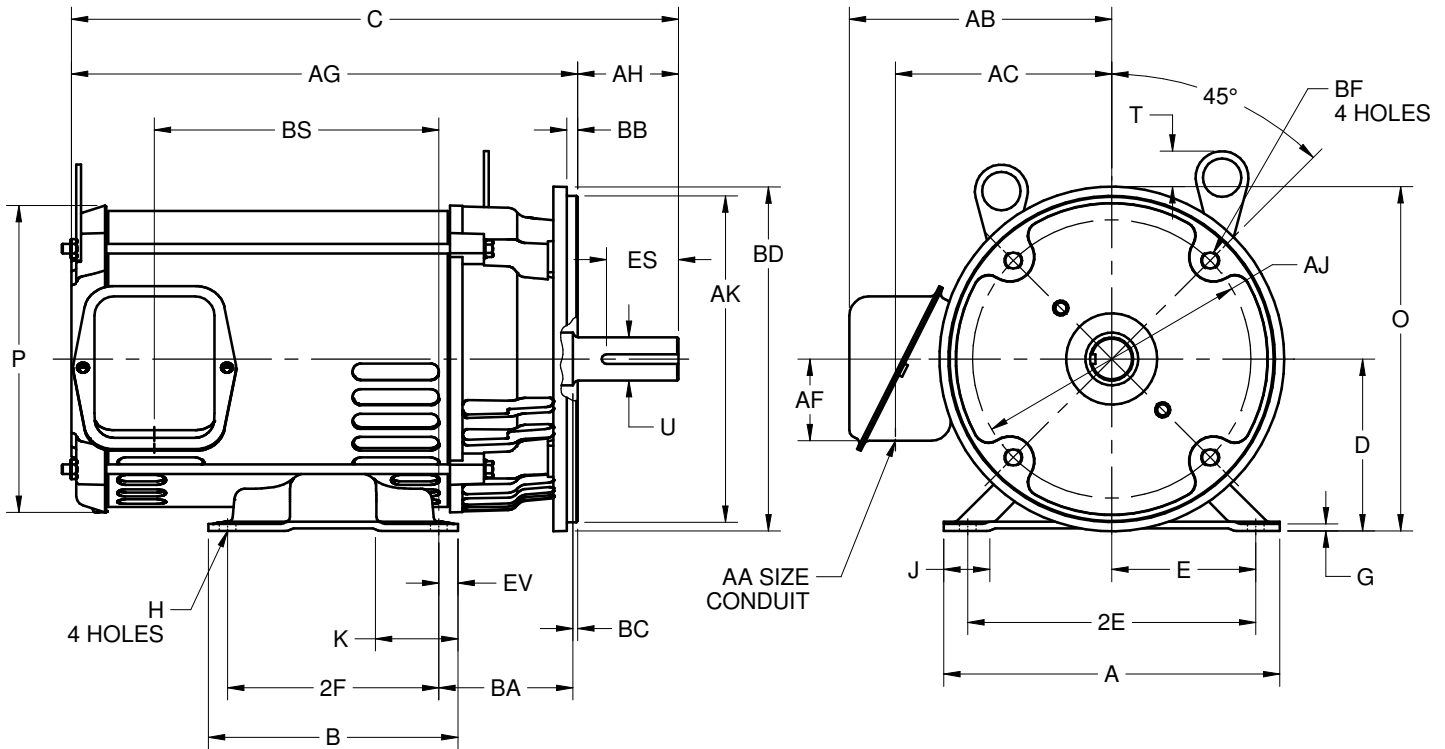
DIMENSION PRINT
OPEN DRIP PROOF C-FACE

PRINT:
07-3329

SUPERSEDES:
NEW

FRAME: 182, 184TC
BASIC TYPE: DE

SHEET:
1 OF 1



ALL DIMENSIONS ARE IN INCHES AND MILLIMETERS

UNITS	A	B	D -.06	E	2E ±.03	G	H +.05	J	K	O	P ²	T
IN	8.75	6.50	4.50	3.75	7.50	.19	.41	1.13	2.00	8.97	8.00	.94
MM	222	165	114	95	191	5	10	29	51	228	203	24

UNITS	U -.0005	AA	AB	AC	AF	AH	AJ	AK -.003	BA	BB MIN	BC	BD MAX
IN	1.1250	.75	6.88	5.63	2.13	2.62	7.250	8.500	3.50	.25	.12	9.00
MM	28.575		175	143	54	67	184.15	215.90	89	6	3	229

UNITS	BF ^{3,4}	ES	EV	SQ KEY
IN	1/2-13 X .75	1.78	.50	.250
MM		45	13	6.35

FRAME	UNITS	C	2F ±.03	AG	BS
182TC	IN	14.31	4.50	11.69	5.91
	MM	363	114	297	150
184TC	IN	15.81	5.50	13.19	7.41
	MM	402	140	335	188

TOLERANCES	
FACE RUNOUT	.004 TIR
PERMISSIBLE ECCENTRICITY OF MOUNTING RABBET	.004 TIR
PERMISSIBLE SHAFT RUNOUT	.002 TIR

1. DIMENSIONS MAY VARY .25" DUE TO CASTING AND/OR FABRICATION VARIATIONS
2. LARGEST MOTOR WIDTH
3. ALL TAP HOLES ARE UNIFIED NATIONAL COARSE, RIGHT HAND THREAD
4. TAP SIZE AND BOLT PENETRATION ALLOWANCE
5. STANDARD ASSEMBLY POSITION F-1 IS SHOWN. F-2 IS PROVIDED WHEN SPECIFIED. CONDUIT OPENINGS MAY BE LOCATED IN STEPS OF 90° REGARDLESS OF THE LOCATION. STANDARD AS SHOWN WITH CONDUIT OPENING DOWN
6. TOLERANCES ARE SHOWN IN INCHES ONLY
7. FRAME REFERENCE: 7.750/182/9.250/184

07-3329/-

Nidec Motor Corporation
St. Louis, Missouri

INFORMATION DISCLOSED ON THIS DOCUMENT IS CONSIDERED PROPRIETARY AND SHALL NOT BE REPRODUCED OR DISCLOSED WITHOUT WRITTEN CONSENT OF NIDEC MOTOR CORPORATION



ISSUED BY
R. TIMMERMANN
APPROVED BY
M. CULLEN

IHP_DP_NMCA (MAR-2011) SOLIDEDGE