

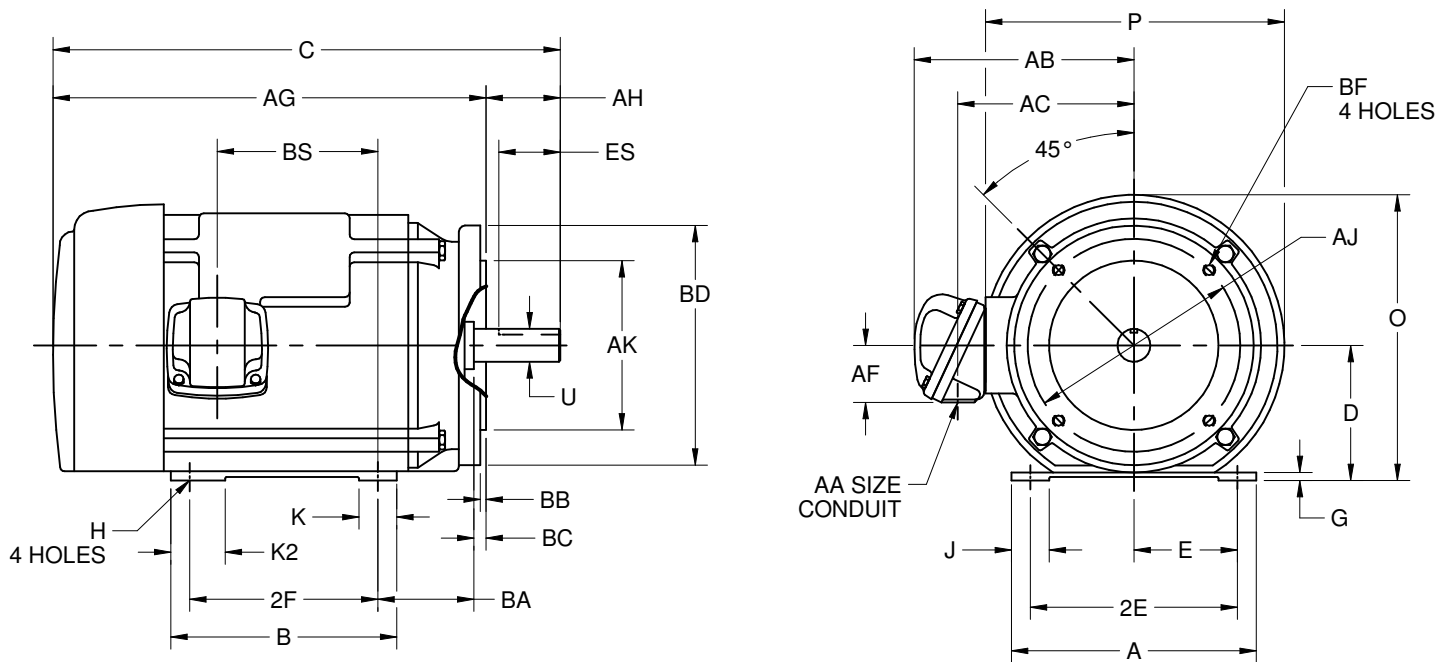
EFFECTIVE:  
**24-MAY-19**

**DIMENSION PRINT**  
W/ NEMA "C" BASE  
FRAME: 140TC  
BASIC TYPE: L

PRINT:  
**07-3397**

SUPERSEDES:  
**NEW**

SHEET:  
**1 OF 1**



ALL DIMENSIONS ARE IN INCHES AND MILLIMETERS

UNITS	A	B	C	D	E	2E	G	H	J	K	K2
IN	6.50	6.00	13.19	3.50	2.75	5.50	.16	.34	.94	.94	1.94
MM	165	152	335	89	70	140	4	9	24	24	49

UNITS	O	P <sup>2</sup>	U	AA	AB	AC	AF	AG	AH	AJ	AK
IN	7.50	8.00	.8750	3/4 NPT	6.69	5.19	1.75	11.06	2.13	5.875	4.500
MM	191	203	22.225		170	132	44	281	54	149.23	114.30

UNITS	BA	BB MIN	BC	BD MAX	BF <sup>4</sup>	BS	ES MIN	SQ KEY
IN	2.75	.16	.13	6.50	3/8-16 X .56	3.75	1.41	.188
MM	70	4	3	165		95	36	4.78

FRAME	UNITS	2F
143TC	IN	4.00
	MM	102
145TC	IN	5.00
	MM	127

1. ALL ROUGH DIMENSIONS MAY VARY BY .25" DUE TO CASTING AND/OR FABRICATION VARIATIONS.
2. LARGEST MOTOR WIDTH.
3. CONDUIT BOX MAY BE LOCATED ON EITHER SIDE. CONDUIT OPENINGS MAY BE LOCATED IN STEPS OF 90 DEGREES REGARDLESS OF LOCATION. STANDARD AS SHOWN WITH CONDUIT OPENING DOWN.
4. TAP SIZE AND BOLT PENETRATION ALLOWANCE.
5. ALL TAPPED HOLES ARE UNIFIED NATIONAL COARSE, RIGHT HAND THREAD.
6. TOLERANCES SHOWN ARE IN INCHES ONLY.

TOLERANCES	
FACE RUNOUT	.004 T.I.R.
PERMISSIBLE ECCENTRICITY OF MOUNTING RABBET	.004 T.I.R.
PERMISSIBLE SHAFT RUNOUT	.002 T.I.R.

**Nidec Motor Corporation**  
St. Louis, Missouri

INFORMATION DISCLOSED ON THIS DOCUMENT IS CONSIDERED PROPRIETARY AND SHALL NOT BE REPRODUCED OR DISCLOSED WITHOUT WRITTEN CONSENT OF NIDEC MOTOR CORPORATION



ISSUED BY  
**L. ARROYO**  
APPROVED BY  
**J. MAGALLANES**

IHP\_DP\_NMCA (MAR-2011) SOLIDEDGE