

EFFECTIVE:  
24-APR-20

# DIMENSION PRINT

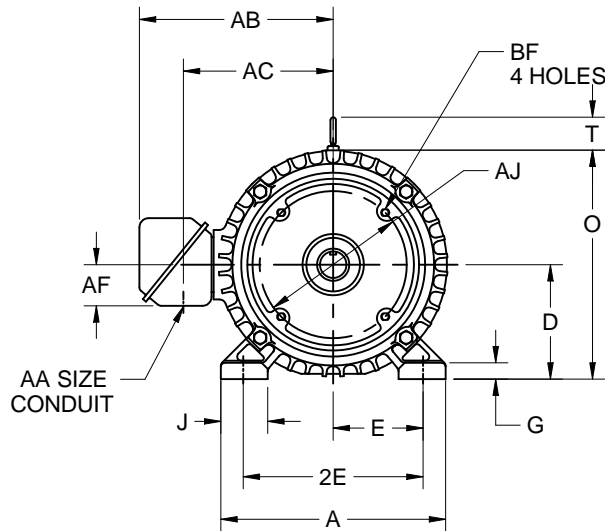
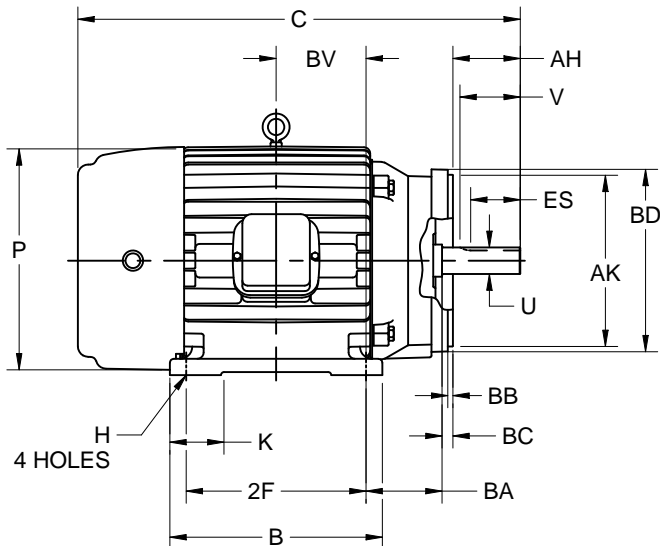
WITH NEMA "C" BRACKET

PRINT:  
07-3398

SUPERSEDES:  
24-MAY-19

FRAME: 210TC  
TYPE: L

SHEET:  
1 OF 1



ALL DIMENSIONS ARE IN INCHES AND MILLIMETERS

UNITS	A	D -.06	E	2E ±.03	G	H +.05	J	K	O	P <sup>6</sup>	T
IN	10.38	5.25	4.25	8.50	.75	.41	1.75	1.94	10.75	11.13	2.00
MM	264	133	108	216	19	10	44	49	273	283	51

UNITS	U <sup>4</sup>	V MIN	AA	AB	AC	AF	AH	AJ	AK -.003	BA	BB MIN
IN	1.3750	3.13	1 NPT	9.20	6.88	2.63	3.13	7.250	8.500	4.25	.25
MM	34.925	80		234	175	67	80	184.2	215.90	108	6

UNITS	BC	BD MAX	BF <sup>2</sup>	ES MIN	SQ KEY
IN	.25	9.00	1/2-13 X .75	2.41	.313
MM	6	229		61	7.95

FRAME	UNITS	B	C	2F ±.03
213TC	IN	7.00	18.44	5.50
	MM	178	468	140
215TC	IN	8.50	19.94	7.00
	MM	216	506	178

TOLERANCES	
FACE RUNOUT	.004 T.I.R.
PERMISSIBLE ECCENTRICITY OF MOUNTING RABBET	.004 T.I.R.
PERMISSIBLE SHAFT RUNOUT	.002 T.I.R.

- ALL ROUGH CASTING DIMENSIONS MAY VARY BY .25" DUE TO CASTING VARIATIONS.
- TAP SIZE AND BOLT PENETRATION ALLOWANCE.
- ALL TAPPED HOLES ARE UNIFIED NATIONAL COARSE, RIGHT HAND THREAD.
- SHAFT EXTENSION DIAMETER TOLERANCE: +.0000/-.0005 UP TO 1-1/2 INCLUSIVE. LARGE DIAMETERS: +.000/-0.001.

- CONDUIT BOX MAY BE LOCATED ON EITHER SIDE OF MOTOR. CONDUIT OPENINGS MAY BE LOCATED IN STEPS OF 90 DEGREES REGARDLESS OF LOCATION. STANDARD AS SHOWN WITH CONDUIT OPENING DOWN.
- LARGEST MOTOR WIDTH.

**Nidec Motor Corporation**  
St. Louis, Missouri

INFORMATION DISCLOSED ON THIS DOCUMENT IS CONSIDERED PROPRIETARY AND SHALL NOT BE REPRODUCED OR DISCLOSED WITHOUT WRITTEN CONSENT OF NIDEC MOTOR CORPORATION



ISSUED BY  
**L. ARROYO**  
APPROVED BY  
**J. MAGALLANES**

IHP\_DP\_NMCA (MAR-2011) SOLIDEDGE