

EFFECTIVE:
27-MAY-19

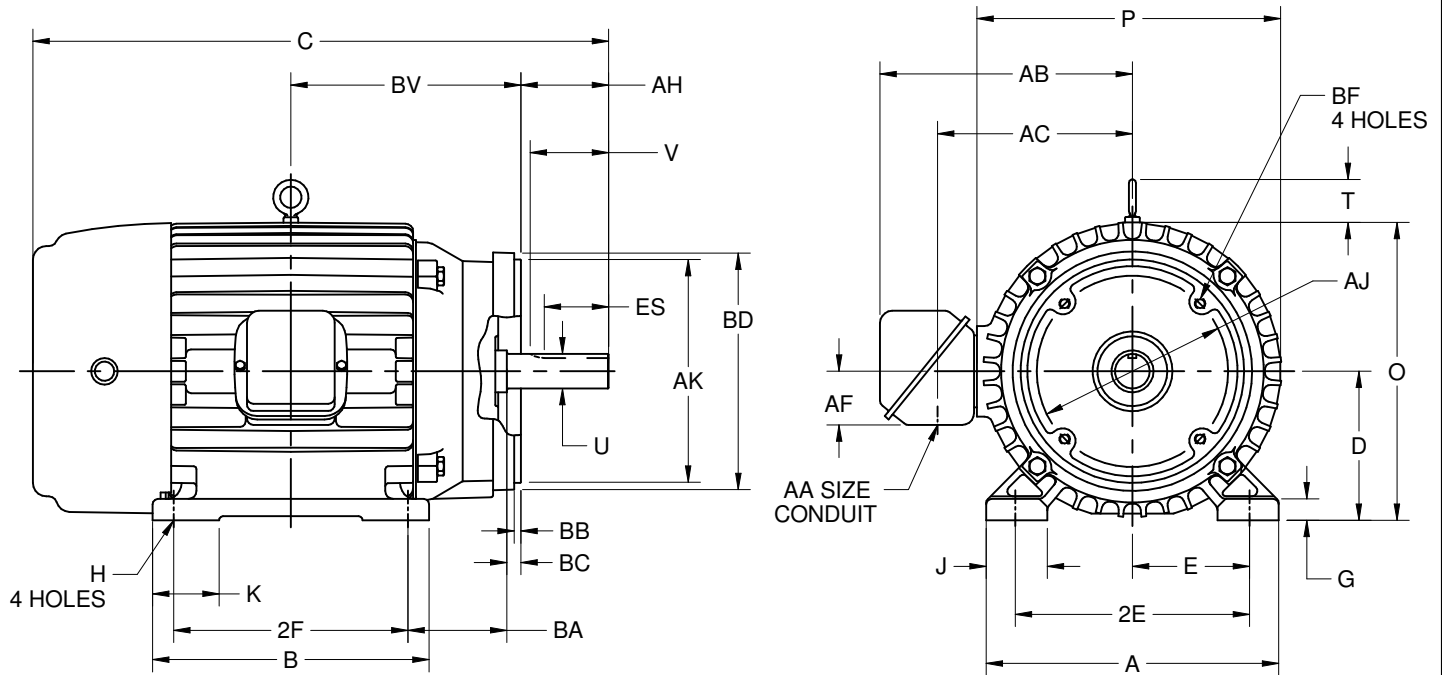
DIMENSION PRINT
WITH NEMA "C" BRACKET

PRINT:
07-3399

SUPERSEDES:
NEW

FRAME: 250TC
TYPE: L

SHEET:
1 OF 1



ALL DIMENSIONS ARE IN INCHES AND MILLIMETERS

UNITS	A	D -.06	E	2E ±.03	G	H +.05	J	K	O	P ⁶	T
IN	12.13	6.25	5.00	10.00	.88	.53	2.25	2.50	12.94	13.31	1.81
MM	308	159	127	254	22	13	57	64	329	338	46

UNITS	U ⁴	V MIN	AA	AB	AC	AF	AH	AJ	AK -.003	BA	BB MIN
IN	1.625	3.75	1-1/2 NPT	11.10	8.45	3.13	3.75	7.250	8.500	4.75	.25
MM	41.275	95		282	215	80	95	184.2	215.90	121	6

UNITS	BC	BD MAX	BF ²	ES MIN	SQ KEY
IN	.25	10.00	1/2-13 X .75	2.91	.375
MM	6	254		74	9.53

FRAME	UNITS	B	C	2F ±.03
254TC	IN	10.25	23.94	8.25
	MM	260	608	210
256TC	IN	12.00	25.44	10.00
	MM	305	646	254

TOLERANCES	
FACE RUNOUT	.004 T.I.R.
PERMISSIBLE ECCENTRICITY OF MOUNTING RABBET	.004 T.I.R.
PERMISSIBLE SHAFT RUNOUT	.002 T.I.R.

- ALL ROUGH CASTING DIMENSIONS MAY VARY BY .25" DUE TO CASTING VARIATIONS.
- TAP SIZE AND BOLT PENETRATION ALLOWANCE.
- ALL TAPPED HOLES ARE UNIFIED NATIONAL COARSE, RIGHT HAND THREAD.
- SHAFT EXTENSION DIAMETER TOLERANCE: +.0000/- .0005 UP TO 1-1/2 INCLUSIVE. LARGE DIAMETERS: +.000/- .001.

- CONDUIT BOX MAY BE LOCATED ON EITHER SIDE OF MOTOR. CONDUIT OPENINGS MAY BE LOCATED IN STEPS OF 90 DEGREES REGARDLESS OF LOCATION. STANDARD AS SHOWN WITH CONDUIT OPENING DOWN.
- LARGEST MOTOR WIDTH.

Nidec Motor Corporation
St. Louis, Missouri

INFORMATION DISCLOSED ON THIS DOCUMENT IS CONSIDERED PROPRIETARY AND SHALL NOT BE REPRODUCED OR DISCLOSED WITHOUT WRITTEN CONSENT OF NIDEC MOTOR CORPORATION



ISSUED BY
L. ARROYO
APPROVED BY
J. MAGALLANES

IHP_DP_NMCA (MAR-2011) SOLIDEDGE