

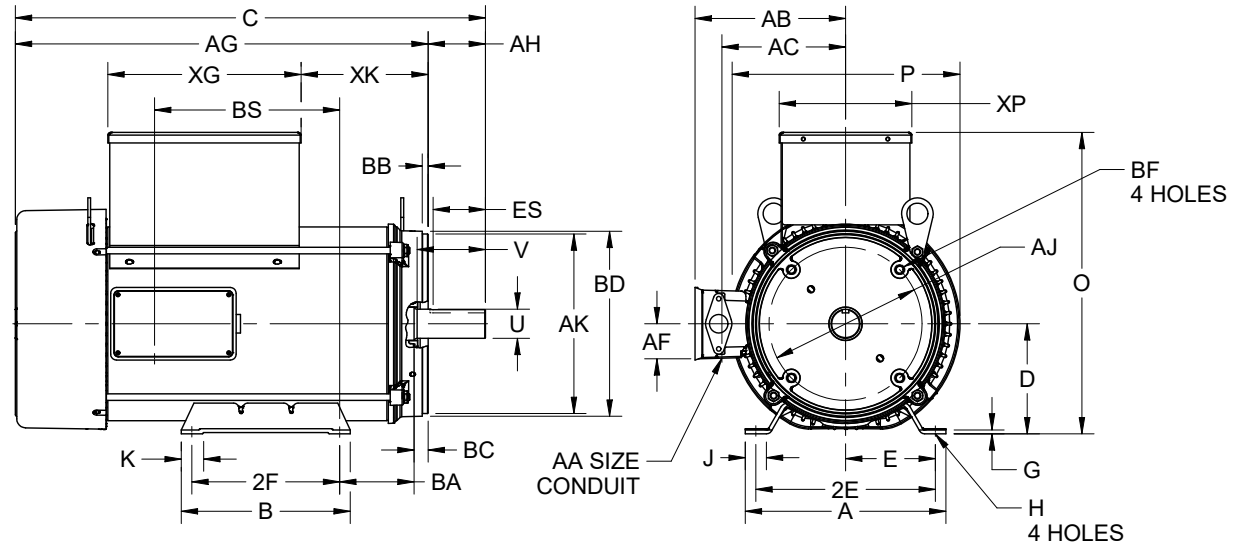
EFFECTIVE:  
**11-APR-23**

**DIMENSION PRINT**  
**FARM DUTY - SINGLE PHASE**  
**FRAME: 182TC THRU 215TC**  
**BASIC TYPE: TMA**

PRINT:  
**07-3533**

SUPERSEDES:  
**11-AUG-22**

SHEET:  
**1 OF 1**



ALL DIMENSIONS ARE IN INCHES AND MILLIMETERS

FRAME	UNITS	A	D -.06	E	2E ±.03	G	H	J	K	P <sup>2</sup>	U -.0005
182TC, 184TC	IN	8.75	4.50	3.75	7.50	.19	.44	1.13	2.00	9.13	1.1250
	MM	222	114	95	191	5	11	29	51	232	28.575
213TC, 215TC	IN	9.50	5.25	4.25	8.50	.19	.44	1.06	1.06	10.84	1.3750
	MM	241	133	108	216	5	11	27	27	275	35.950

FRAME	UNITS	V MIN	AA	AB	AC	AF	AH ±.031	AJ	AK +.005	BA	BB MIN
182TC, 184TC	IN	2.63	1.38	6.47	5.16	1.59	2.63	7.250	8.500	3.50	.25
	MM	67		164	131	40	67	184.15	215.90	89	6
213TC, 215TC	IN	3.25	1.38	7.19	5.88	1.59	3.12	7.250	8.500	4.25	.25
	MM	83		183	149	40	79	184.15	215.90	108	6

FRAME	UNITS	BC	BD MAX	BF <sup>7</sup>	ES MIN	SQ KEY
182TC, 184TC	IN	.13	9.00	3/8-16 X 1.00	1.81	.250
	MM	3	229		46	6.35
213TC, 215TC	IN	.25	9.00	1/2-13 X .75	2.44	.313
	MM	6	229		62	7.94

FRAME	UNITS	HP	B	C	2F ±.03	O	AG	BS	XG	XK	XP
184TC	IN	3	6.50	17.19	5.50	10.41	14.55	6.78	4.94	5.60	2.19
	MM		165	437	140	264	369	172	125	142	56
184TC	IN	5	6.50	18.19	5.50	10.41	15.55	7.78	4.94	6.60	2.19
	MM		165	462	140	264	395	198	125	168	56
213TC	IN	5	6.50	19.59	5.50	14.31	16.96	6.88	9.38	3.50	6.28
	MM		165	498	140	363	431	175	238	89	160
215TC	IN	7 1/2, 10	8.00	22.09	7.00	14.31	19.46	9.38	9.38	6.00	6.28
	MM		203	561	178	363	494	2.38	238	152	160

1. DIMENSIONS MAY VARY .25" DUE TO CASTING AND/OR FABRICATION VARIATIONS
2. LARGEST MOTOR WIDTH
3. STANDARD ASSEMBLY POSITION F-1 IS SHOWN. F-2 IS PROVIDED WHEN SPECIFIED. CONDUIT OPENING MAY BE LOCATED IN STEPS OF 90° REGARDLESS OF THE LOCATION
4. TOLERANCES ARE SHOWN IN INCHES ONLY

07-3533/A

**Nidec Motor Corporation**  
St. Louis, Missouri

INFORMATION DISCLOSED ON THIS DOCUMENT IS CONSIDERED PROPRIETARY AND SHALL NOT BE REPRODUCED OR DISCLOSED WITHOUT WRITTEN CONSENT OF NIDEC MOTOR CORPORATION



ISSUED BY  
**D. CORTES**  
APPROVED BY  
**E. OVIEDO**

IHP\_DP\_NMCA (MAR-2011) SOLIDEDGE