

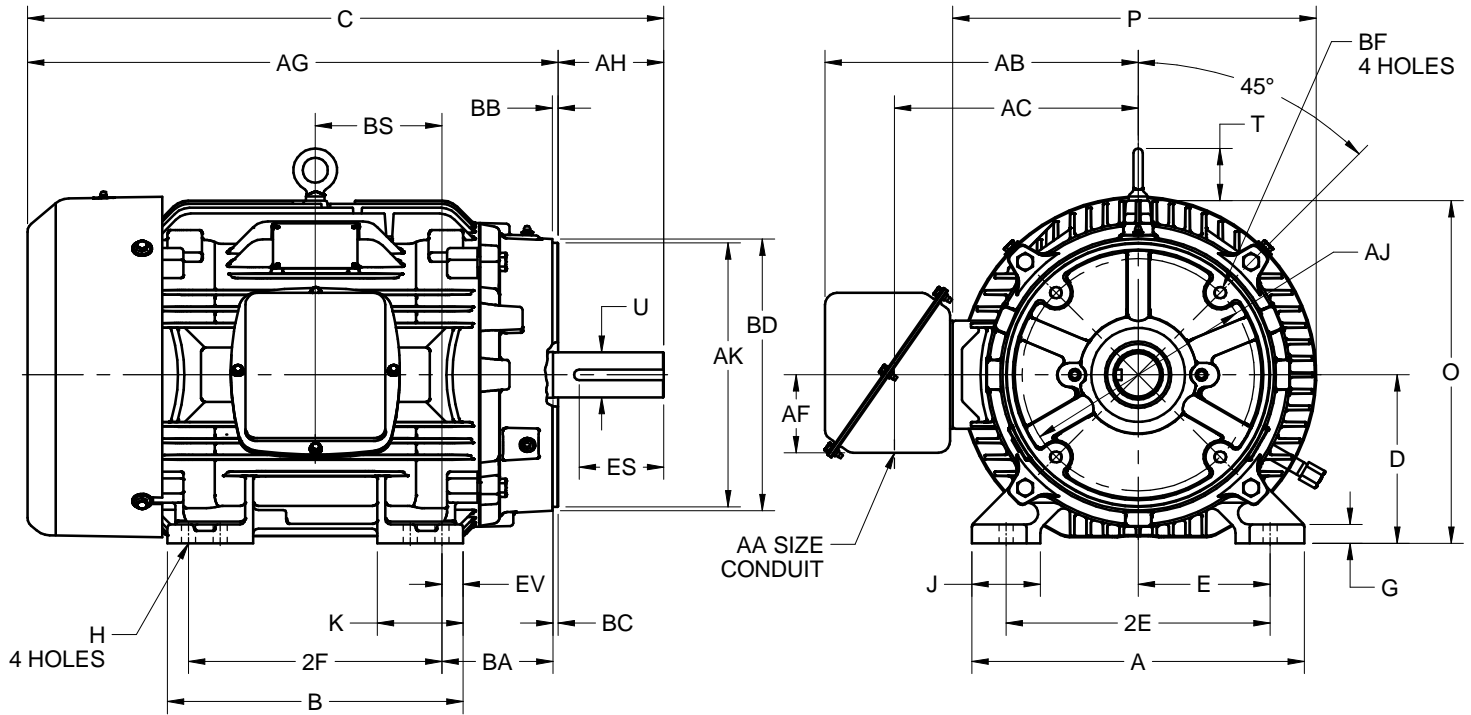
EFFECTIVE:  
**13-AUG-19**

SUPERSEDES:  
**28-MAR-19**

**DIMENSION PRINT**  
WORLD MOTOR HOSTILE DUTY C-FACE  
FRAME: 324TC, 326TC  
BASIC TYPE: CT

PRINT:  
**08-1030**

SHEET:  
**1 OF 1**



ALL DIMENSIONS ARE IN INCHES AND MILLIMETERS

UNITS	A	B	C	D -.06	E	2E ±.03	G	H +.05	J	K	O	P <sup>2</sup>	T
IN	15.75	14.00	30.13	8.00	6.25	12.50	.91	.66	3.25	4.06	16.25	17.22	2.47
MM	400	356	765	203	159	318	23	17	33	103	413	437	63

UNITS	U -.001	AA	AB	AC	AF	AG	AH	AJ	AK -.005	BA	BB MIN	BC	BD MAX
IN	2.125	2.00	14.81	11.53	3.69	25.13	5.00	11.000	12.500	5.25	.25	.25	14.00
MM	53.98		376	293	94	638	127	279.40	317.50	133	6	6	356

UNITS	BF <sup>3,4</sup>	BS	EV	ES MIN	SQ KEY
IN	5/8-11 X .94	6.00	1.00	3.91	.500
MM		152	25	99	12.70

FRAME	UNITS	2F ±.03
324TC	IN	10.50
	MM	267
326TC	IN	12.00
	MM	305

TOLERANCES	
FACE RUNOUT	.007 TIR
PERMISSIBLE ECCENTRICITY OF MOUNTING RABBIT	.007 TIR
PERMISSIBLE SHAFT RUNOUT	.003 TIR

1. DIMENSIONS MAY VARY .25" DUE TO CASTING AND/OR FABRICATION VARIATIONS
2. LARGEST MOTOR WIDTH
3. ALL TAP HOLES ARE UNIFIED NATIONAL COARSE, RIGHT HAND THREAD
4. TAP SIZE AND BOLT PENETRATION ALLOWANCE
5. STANDARD ASSEMBLY POSITION F-1 IS SHOWN. F-2 IS PROVIDED WHEN SPECIFIED. CONDUIT OPENING MAY BE LOCATED IN STEPS OF 90° REGARDLESS OF THE LOCATION
6. TOLERANCES ARE SHOWN IN INCHES ONLY

08-1030/B

**Nidec Motor Corporation**  
St. Louis, Missouri

INFORMATION DISCLOSED ON THIS DOCUMENT IS CONSIDERED PROPRIETARY AND SHALL NOT BE REPRODUCED OR DISCLOSED WITHOUT WRITTEN CONSENT OF NIDEC MOTOR CORPORATION



ISSUED BY  
**R. TIMMERMANN**  
APPROVED BY  
**M. CULLEN**

IHP\_DP\_NMCA (MAR-2011) SOLIDEDGE