

EFFECTIVE:
30-NOV-17

DIMENSION PRINT

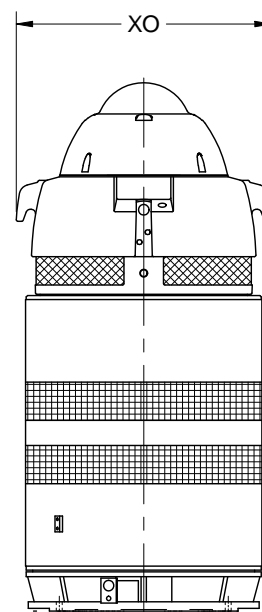
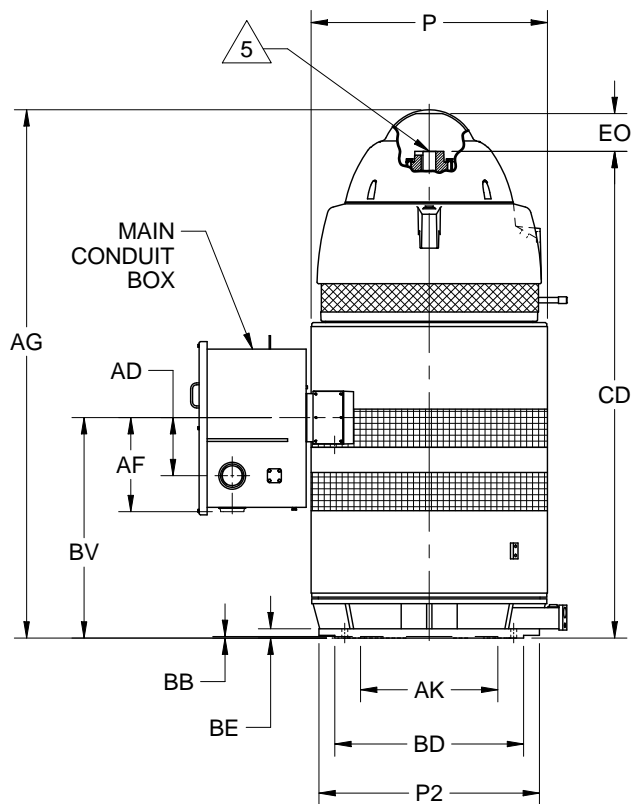
WEATHER PROTECTED TYPE I

PRINT:
09-1789

SUPERSEDES:
20-JUL-11

FRAME: 8000PH, PC
BASIC TYPE: RU

SHEET:
1 OF 1



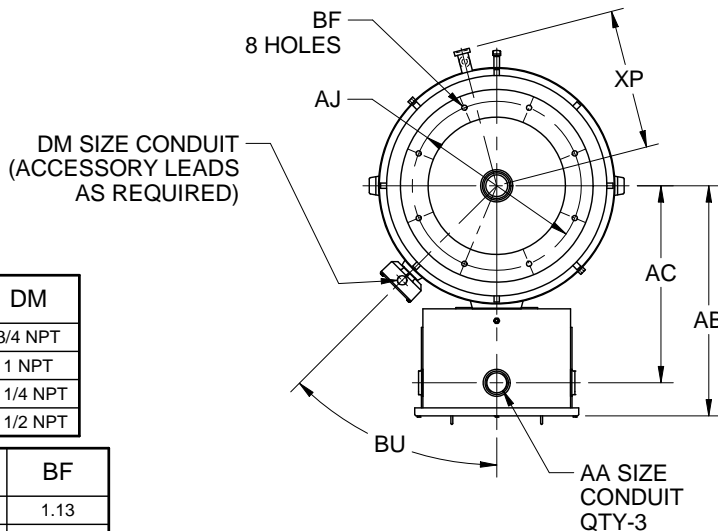
ALL DIMENSIONS ARE IN INCHES

FRAME	AG	BV	CD
8006	92.06	33.75	84.56
8007	96.06	37.75	88.56
8008	100.06	41.75	92.56
8009	104.06	45.75	96.56
8010	108.06	49.75	100.56
8011	112.06	53.75	104.56
8012	116.06	57.75	108.56

AA	DM
3 NPT	3/4 NPT
3 1/2 NPT	1 NPT
4 NPT	1 1/4 NPT
	1 1/2 NPT

FRAME	AJ	AK +.007	BB MIN	BD MAX	BE	BF
8000PH	39.000	33.750	.25	42.00	1.75	1.13
8000PC	32.000	26.000	.25	36.00	1.75	1.00

P ²	P2 ⁴	AB	AC	AD	AF	BU	EO	XO	XP
44.81	41.75	43.56	37.31	11.00	17.81	45°	7.13	48.25	26.59



- DIMENSIONS MAY VARY BY $\pm .25$ " DUE TO CASTING AND/OR FABRICATION VARIATIONS.
 - LARGEST MOTOR WIDTH.
 - MAIN CONDUIT BOX MAY NOT BE ROTATED, HOWEVER CONDUIT OPENINGS ARE PROVIDED ON THE BOTTOM AND EACH SIDE. BOX DIMENSIONS: 30h x 28w x 20d
 - MAX BRACKET FLANGE OD. FOR PH BASE, THIS IS SAME AS "BD".
- 5 PUMP SHAFT, ADJUSTING NUT AND LOCKING SCREWS ARE NOT FURNISHED WITH MOTOR.

TOLERANCES	
FACE RUNOUT	.009 T.I.R.
PERMISSIBLE ECCENTRICITY OF MOUNTING RABBET	.009 T.I.R.
MAXIMUM SHAFT END PLAY	.010

09-1789/C

Nidec Motor Corporation
St. Louis, Missouri

INFORMATION DISCLOSED ON THIS DOCUMENT IS CONSIDERED PROPRIETARY AND SHALL NOT BE REPRODUCED OR DISCLOSED WITHOUT WRITTEN CONSENT OF NIDEC MOTOR CORPORATION



ISSUED BY
K. FRIEDMAN
APPROVED BY
K. POTTER

IHP_DP_NMCA (MAR-2011) SOLIDEDGE