

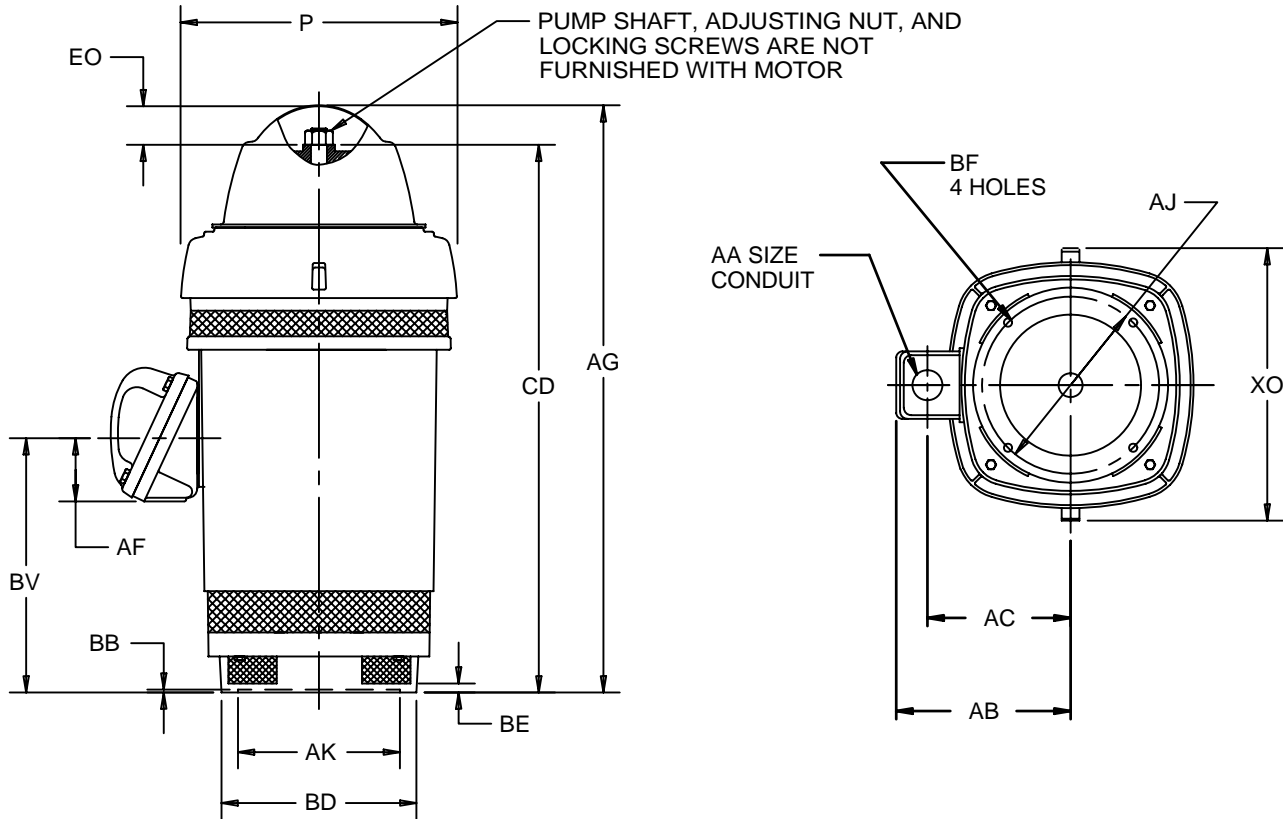
EFFECTIVE:
25-AUG-11

SUPERSEDES:
28-JUL-11

VERTICAL MOTORS
WEATHER PROTECTED TYPE I
FRAME: 444, 445TP, TPA
BASIC TYPE: RU

PRINT:
09-2294

SHEET:
1 OF 1



ALL DIMENSIONS ARE IN INCHES AND MILLIMETERS

BASIC FRAME	UNITS	P ²	AG	BE	BV	CD	EO	XO
440	IN	22.88	47.81	.75	21.16	42.66	5.13	25.88
	MM	581	1214	19	537	1084	130	657

FRAME	CONDUIT BOX MATERIAL	UNITS	AA	AB	AC	AF
440	STEEL	IN	3.00	18.94	14.44	4.72
		MM	76	481	367	120
	CAST IRON	IN	3 1/2 NPT	18.56	14.31	5.28
		MM	471	363	134	

FRAME	UNITS	AJ	AK +.005	BB MIN	BD MAX	BF
444, 445TP	IN	14.750	13.500	.25	16.50	.69
	MM	374.65	342.90	6	419	18
444, 445TPA	IN	14.750	13.500	.25	20.00	.69
	MM	374.65	342.90	6	508	18

- 1: ALL ROUGH DIMENSIONS MAY VARY BY .25" DUE TO CASTING AND/OR FABRICATION VARIATIONS.
- 2: LARGEST MOTOR WIDTH.
- 3: CONDUIT OPENINGS MAY BE LOCATED IN STEPS OF 90 DEGREES REGARDLESS OF LOCATION. STANDARD AS SHOWN WITH CONDUIT OPENING DOWN.
- 4: TOLERANCES SHOWN ARE IN INCHES ONLY.

TOLERANCES	
FACE RUNOUT	.007 T.I.R.
PERMISSIBLE ECCENTRICITY OF MOUNTING RABBIT	.007 T.I.R.

09-2294/B

Nidec Motor Corporation
St. Louis, Missouri

INFORMATION DISCLOSED ON THIS DOCUMENT IS CONSIDERED PROPRIETARY AND SHALL NOT BE REPRODUCED OR DISCLOSED WITHOUT WRITTEN CONSENT OF NIDEC MOTOR CORPORATION



ISSUED BY
R. KING
APPROVED BY
K. POTTER

IHP_DP_NMCA (MAR-2011) SOLIDEDGE