

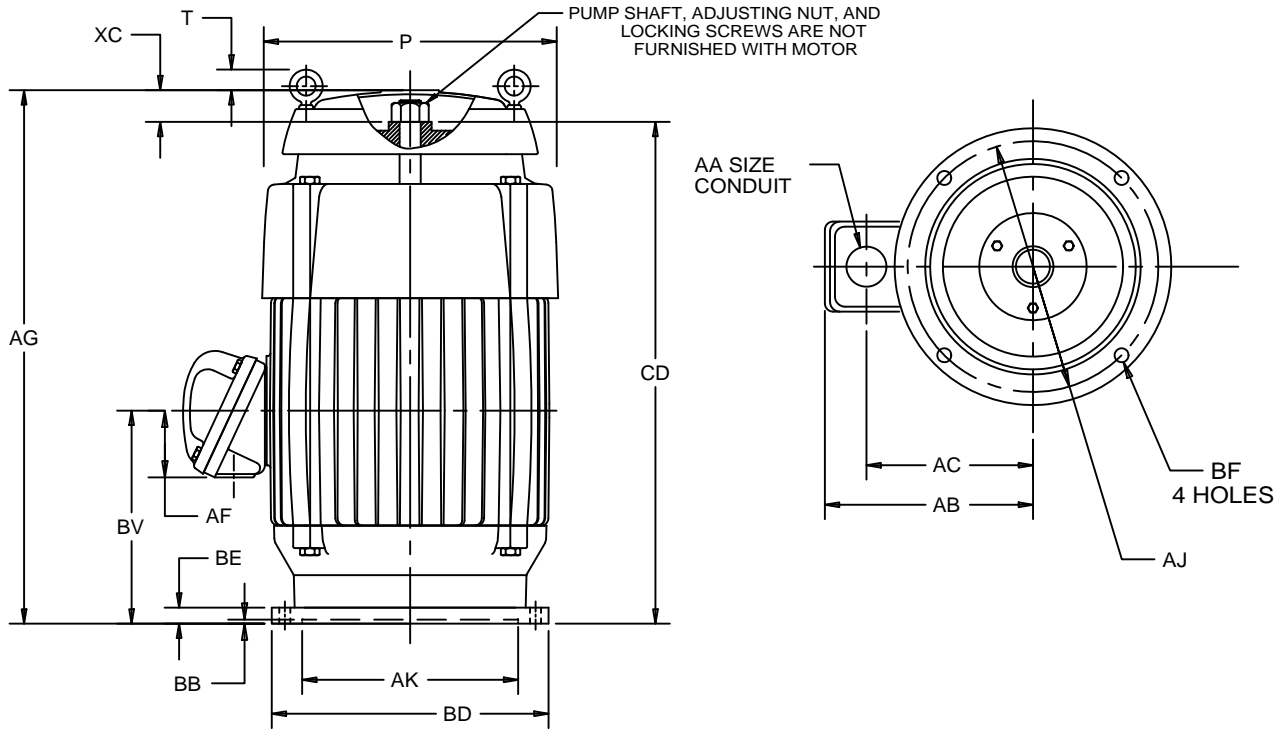
EFFECTIVE:
08-JUN-11

SUPERSEDES:
31-AUG-01

VERTICAL MOTORS
EXPLOSION PROOF
FRAME: 324, 326TP, TPH
BASIC TYPE: LU

PRINT:
09-2306

SHEET:
1 OF 1



ALL DIMENSIONS ARE IN INCHES & MILLIMETERS

UNITS	P	T	AA	AB	AC	AF	AG	BE
IN	17.00	-1.25	2 NPT	14.25	10.75	3.88	35.63	1.00
mm	432	-32		362	273	99	905	25

UNITS	BV	CD	XC	XG
IN	11.94	28.50	6.88	1.56
mm	303	724	175	396

FRAME	UNITS	AJ	AK	BB MIN	BD MAX	BF
324,326TP	IN	14.750	13.500	.25	16.50	.69
	mm	374.65	342.90	6	419	18
324,326TPH	IN	9.125	8.250	.19	12.00	.44
	mm	231.78	209.55	6	305	11

TOLERANCES	8.250 AK	13.500 AK
FACE RUNOUT	.004 T.I.R.	.007 T.I.R.
PERMISSIBLE ECCENTRICITY OF MOUNTING RABBET	.004 T.I.R.	.007 T.I.R.
"AK" DIMENSION	-.000;+.003	-.000;+.005

- 1: ALL ROUGH CASTING DIMENSIONS MAY VARY BY .25" DUE TO CASTING VARIATIONS.
- 2: LARGEST MOTOR WIDTH.
- 3: CONDUIT BOX MAY BE LOCATED IN STEPS OF 90-STANDARD AS SHOWN WITH CONDUIT OPENING DOWN.
- 4: (-) MINUS SIGN INDICATES EYEBOLT IS BELOW THE TOP OF THE UNIT.
- 5: TOLERANCES SHOWN ARE IN INCHES ONLY.

09-2306/A

Nidec Motor Corporation
St. Louis, Missouri

INFORMATION DISCLOSED ON THIS DOCUMENT IS CONSIDERED PROPRIETARY AND SHALL NOT BE REPRODUCED OR DISCLOSED WITHOUT WRITTEN CONSENT OF NIDEC MOTOR CORPORATION



ISSUED BY
O. GALLEGOS
APPROVED BY
J. RANGEL

IHP_DP_NMCA (MAR-2011) SOLIDEDGE