

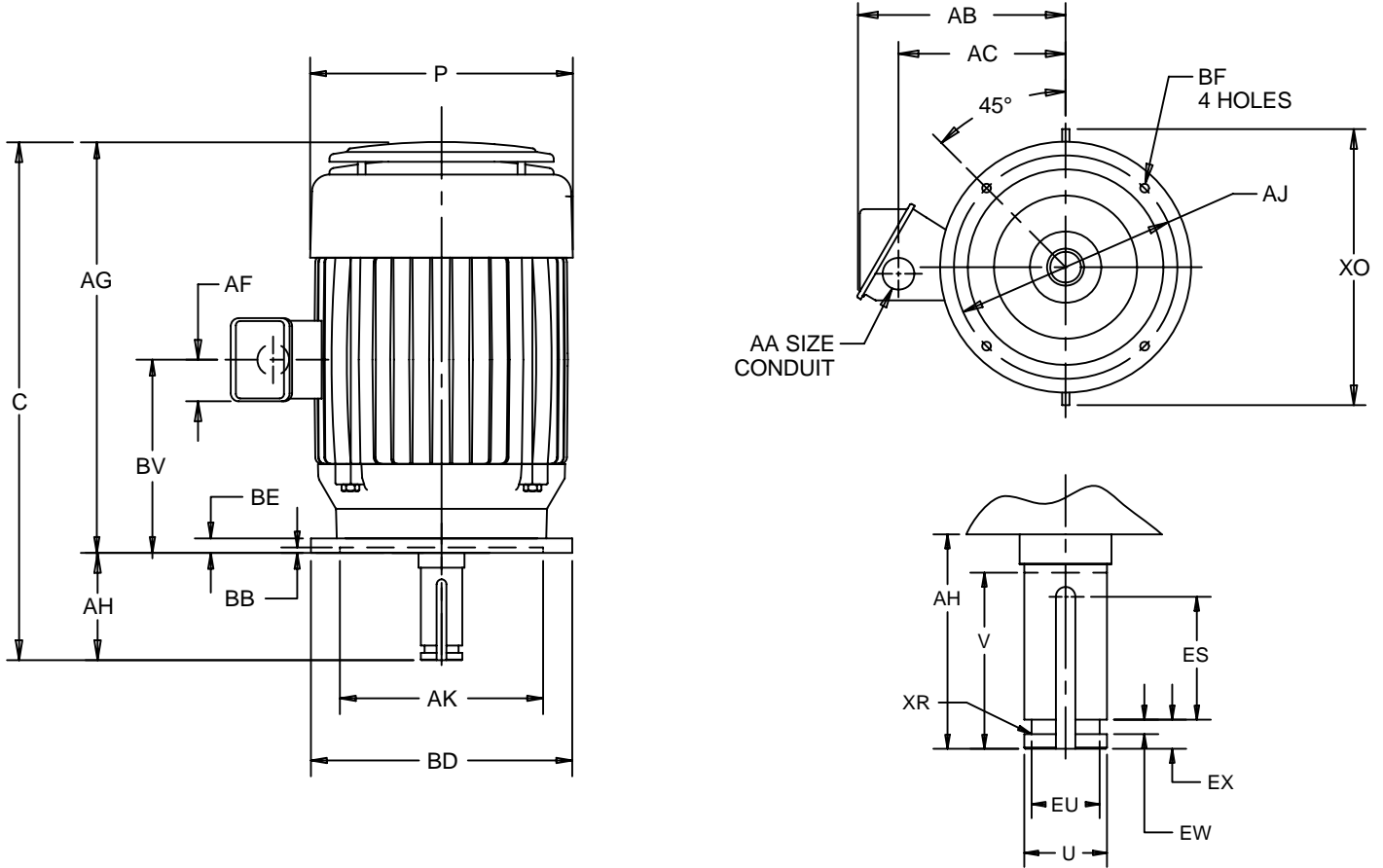
EFFECTIVE:  
26-JUL-12

SUPERSEDES:  
01-AUG-11

**VERTICAL MOTORS**  
WEATHER PROTECTED TYPE I  
FRAME: 284VP THRU 286VPHZ  
BASIC TYPE: AV4

PRINT:  
09-2327

SHEET:  
1 OF 1



ALL DIMENSIONS ARE IN INCHES AND MILLIMETERS

UNITS	P <sup>3</sup>	AA	AB	AC	AF	AG	BE	BV	EW +.002	EX -.005	XO	XR
IN	14.00	1.50	11.07	8.32	2.59	28.25	1.00	14.75	.375	.750	16.88	.03
MM	356		281	211	66	718	25	375	9.53	19.05	429	.8

FRAME	UNITS	C	U	V MIN	AH -.063	AJ	AK	BB MIN	BD MAX	BF	ES MIN	EU -.005	SQ KEY
284, 286VPZ	IN	32.75	1.625	4.50	4.500	9.125	8.250	.19	10.00	.44	3.06	1.250	.375
	MM	832	41.28	114	114.30	231.78	209.55	5	254	11	78	31.75	9.53
284, 286VPAZ	IN	32.75	1.625	4.50	4.500	9.125	8.250	.19	12.00	.44	3.06	1.250	.375
	MM	832	41.28	114	114.30	231.78	209.55	5	305	11	78	31.75	9.53
284, 286VPHZ	IN	32.75	1.625	4.50	4.500	14.750	13.500	.25	16.50	.69	3.06	1.250	.375
	MM	832	41.28	114	114.30	374.65	342.90	6	419	18	78	31.75	9.53
284, 286VP	IN	31.00	1.1250	2.75	2.750	9.125	8.250	.19	10.00	.44	1.31	.875	.250
	MM	787	28.575	70	69.85	231.78	209.55	5	254	11	33	22.23	6.35
284, 286VPA	IN	31.00	1.1250	2.75	2.750	9.125	8.250	.19	12.00	.44	1.31	.875	.250
	MM	787	28.575	70	69.85	231.78	209.55	5	305	11	33	22.23	6.35
284, 286VPH	IN	31.00	1.1250	2.75	2.750	14.750	13.500	.25	16.50	.69	1.31	.875	.250
	MM	787	28.575	70	69.85	374.65	342.90	6	419	18	33	22.23	6.35

- 1: ALL ROUGH DIMENSIONS MAY VARY BY .25" DUE TO CASTING AND/OR FABRICATION VARIATIONS.
- 2: SHAFT EXTENSION DIAMETER TOLERANCE: +.0000; -.0005 UP 1 1/2" INCLUSIVE. LARGE DIAMETERS: +.000; -.001.
- 3: LARGEST MOTOR WIDTH.
- 4: CONDUIT OPENING MAY BE LOCATED IN STEPS OF 180 DEGREES. STANDARD AS SHOWN WITH CONDUIT OPENING DOWN.
- 5: TOLERANCES SHOWN ARE IN INCHES ONLY.

TOLERANCES	8.250 AK	13.500 AK
"AK" DIMENSION	+.003; -.000	+.005; -.000
FACE RUNOUT	.004 T.I.R.	.007 T.I.R.
PERMISSIBLE ECCENTRICITY OF MOUNTING RABBET	.004 T.I.R.	.007 T.I.R.
PERMISSIBLE SHAFT RUNOUT	.002 T.I.R.	.002 T.I.R.

09-2327/B

**Nidec Motor Corporation**  
St. Louis, Missouri

INFORMATION DISCLOSED ON THIS DOCUMENT IS CONSIDERED PROPRIETARY AND SHALL NOT BE REPRODUCED OR DISCLOSED WITHOUT WRITTEN CONSENT OF NIDEC MOTOR CORPORATION



ISSUED BY  
**R. KING**  
APPROVED BY  
**J. O'BRIEN**

IHP\_DP\_NMCA (MAR-2011) SOLIDEDGE