

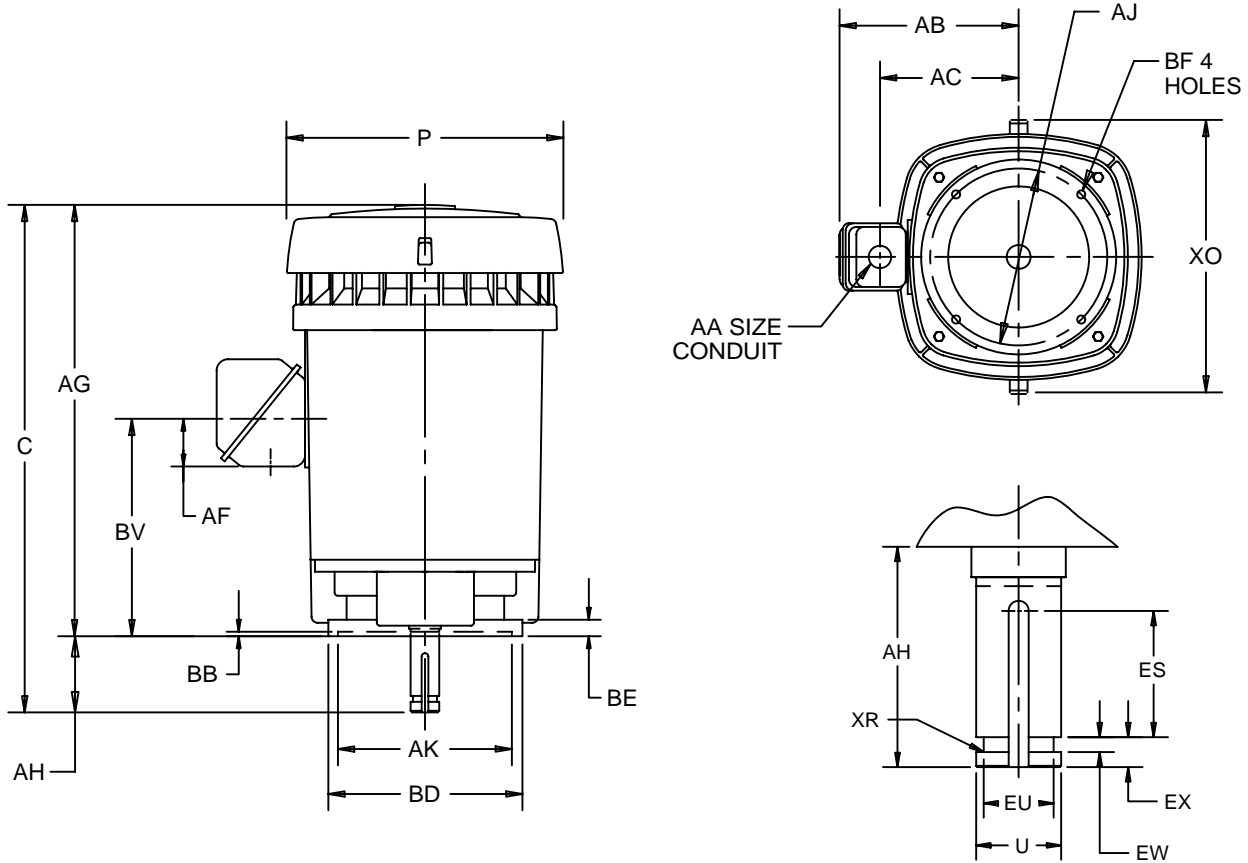
EFFECTIVE:
26-JUL-12

SUPERSEDES:
20-DEC-11

VERTICAL MOTORS
WEATHER PROTECTED TYPE 1
FRAME: 364VP THRU 365VPAZ
BASIC TYPE: RV

PRINT:
09-2333

SHEET:
1 OF 1



ALL DIMENSIONS ARE IN INCHES AND MILLIMETERS

UNITS	C	P ²	AA	AB	AC	AF	AG	AH	BV	ES MIN	EW +.002	EX -.005	XO	XR
IN	32.38	18.25	3.00	15.75	11.50	3.38	27.88	4.50	15.31	3.03	.375	.750	20.94	.03
MM	822	464		400	292	86	708	114	340	77	9.53	19.05	532	1

FRAME	UNITS	AJ	AK	BB MIN	BD MAX	BE	BF	FRAME	UNITS	U -.001	EU -.005	SQ KEY
360VP, VPZ	IN	14.750	13.500	.25	16.50	.69	.69	360VP, VPA	IN	1.625	1.250	.375
	MM	374.65	342.90	6	419	18	18		MM	41.28	31.75	9.53
360VPA, VPAZ	IN	9.125	8.250	.19	12.00	.94	.44	360VPZ, VPAZ	IN	2.125	1.750	.500
	MM	231.78	209.55	5	305	24	11		MM	53.98	44.45	12.70

TOLERANCES		8.250 AK	13.500 AK
FACE RUNOUT		.004 T.I.R.	.007 T.I.R.
PERMISSIBLE ECCENTRICITY OF MOUNTING RABBET		.004 T.I.R.	.007 T.I.R.
PERMISSIBLE SHAFT RUNOUT		.002 T.I.R.	.002 T.I.R.
TOLERANCE ON AK-DIMENSION		+.003	+.005

- 1: ALL ROUGH DIMENSIONS MAY VARY BY .25" DUE TO CASTING AND/OR FABRICATION VARIATIONS.
- 2: LARGEST MOTOR WIDTH.
- 3: CONDUIT OPENINGS MAY BE LOCATED IN STEPS OF 90 DEGREES REGARDLESS OF LOCATION. STANDARD AS SHOWN WITH CONDUIT OPENING DOWN.
- 4: TOLERANCES SHOWN ARE IN INCHES ONLY.

09-2333/C

Nidec Motor Corporation
St. Louis, Missouri

INFORMATION DISCLOSED ON THIS DOCUMENT
IS CONSIDERED PROPRIETARY AND SHALL NOT BE
REPRODUCED OR DISCLOSED WITHOUT WRITTEN
CONSENT OF NIDEC MOTOR CORPORATION



ISSUED BY
R. KING
APPROVED BY
J. O'BRIEN

IHP_DP_NMCA (MAR-2011) SOLIDEDGE