

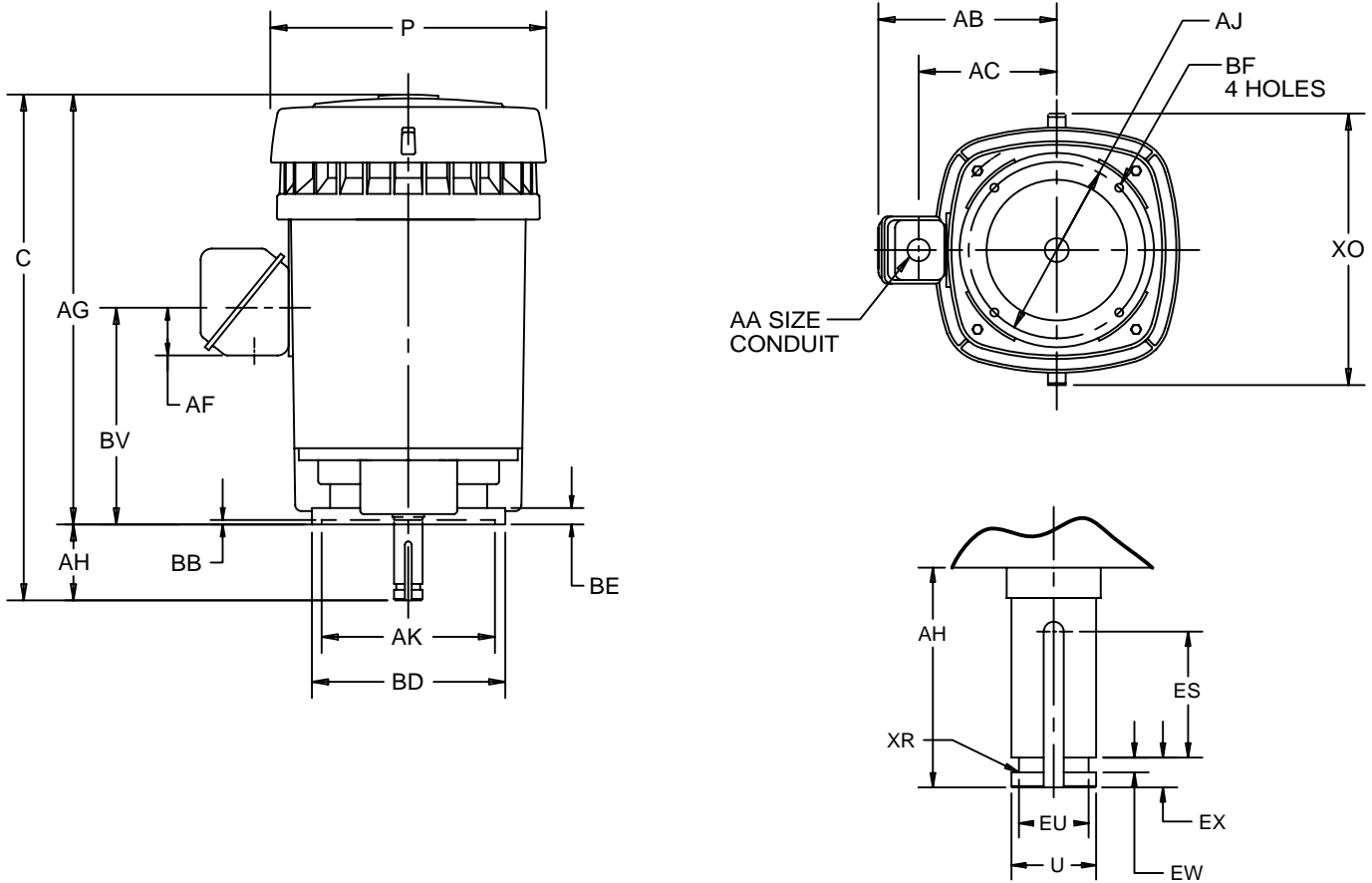
EFFECTIVE:
24-MAY-11

VERTICAL MOTORS
WITH OVERSIZED OUTLET BOX
FRAME: 404VP THRU 405VPAZ
BASIC TYPE: RV

PRINT:
09-2334-05

SUPERSEDES:
NEW

SHEET:
1 OF 1



DIMENSIONS ARE IN INCHES AND MILLIMETERS

UNITS	C	P ¹	AA	AB	AC	AF	AG	AH	AJ	AK +.005	BB MIN
IN	36.25	20.50	3.00	17.88	13.38	4.72	31.75	4.50	14.750	13.500	.25
MM	822	464		454	340	120	708	114	374.65	342.90	6

UNITS	BE	BF	BV	ES MIN	EW +.002	EX -.005	XO	XR
IN	.75	.69	18.13	3.03	.375	.750	23.38	.03
MM	19	18	461	77	9.53	19.05	594	1

FRAME	UNITS	U -.001	EU -.005	SQ KEY	FRAME	UNITS	BD MAX
400VP,VPA	IN	1.625	1.250	.375	404,405VP	IN	16.50
	MM	41.28	31.75	9.53	404,405VPZ	MM	419
400VPZ,VPAZ	IN	2.125	1.750	.500	404,405VPA	IN	20.00
	MM	53.98	44.45	12.70	404,405VPAZ	MM	508

- 1) ALL ROUGH DIMENSIONS MAY VARY BY .25" DUE TO CASTING AND/OR FABRICATION VARIATIONS.
- 2) CONDUIT BOX OPENING MAY BE LOCATED IN STEPS OF 90°. STANDARD AS SHOWN WITH CONDUIT OPENING DOWN.
- 3) LARGEST MOTOR WIDTH.
- 4) TOLERANCES SHOWN ARE IN INCHES ONLY.

TOLERANCES	
FACE RUNOUT	.007 T.I.R.
PERMISSIBLE ECCENTRICITY OF MOUNTING RABBET	.007 T.I.R.
PERMISSIBLE SHAFT RUNOUT	.002 T.I.R.

09-2334/B

Nidec Motor Corporation
St. Louis, Missouri

INFORMATION DISCLOSED ON THIS DOCUMENT IS CONSIDERED PROPRIETARY AND SHALL NOT BE REPRODUCED OR DISCLOSED WITHOUT WRITTEN CONSENT OF NIDEC MOTOR CORPORATION



ISSUED BY
R. KING
APPROVED BY
J. O'BRIEN

IHP_DP_NMCA (MAR-2011) SOLIDEDGE