

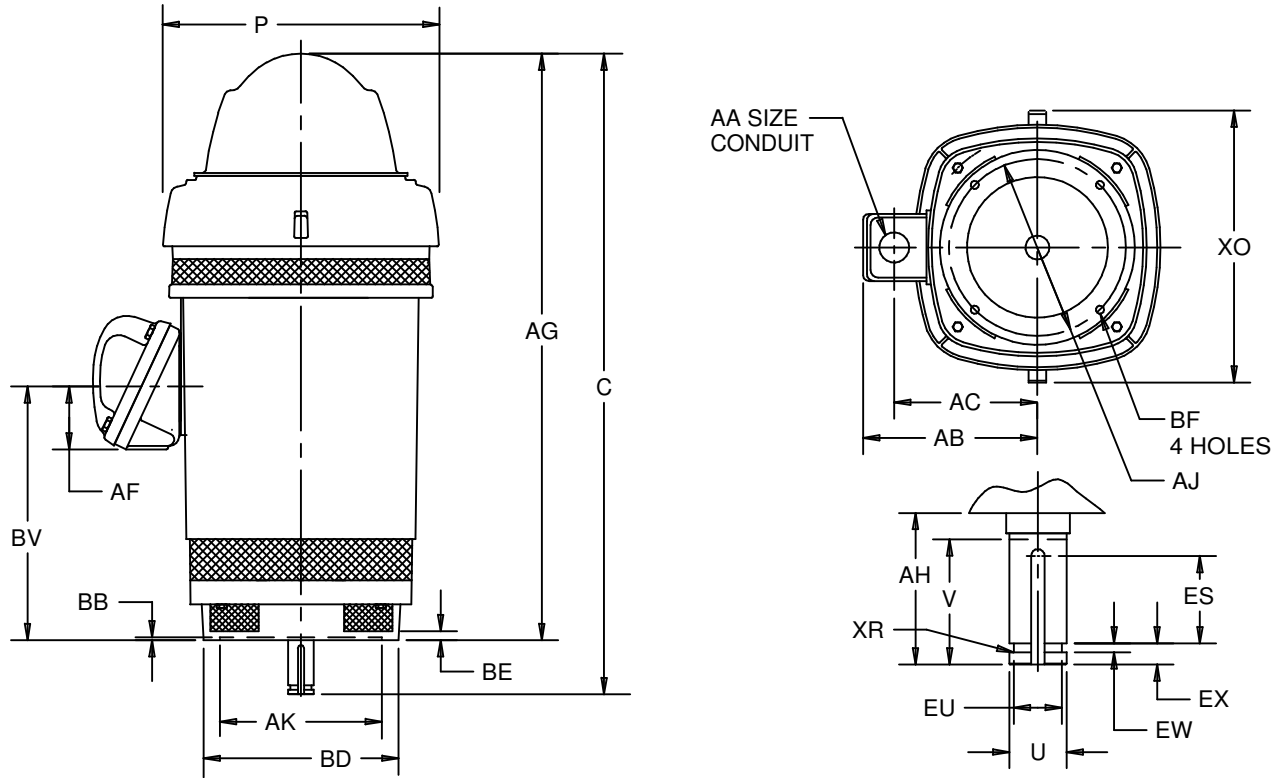
EFFECTIVE:  
**07-MAR-11**

SUPERSEDES:  
**29-JAN-02**

**VERTICAL MOTORS**  
WEATHER PROTECTED TYPE 1  
FRAME: 324, 326VP, VPH  
BASIC TYPE: RV-4

PRINT:  
**09-2336**

SHEET:  
**1 OF 1**



ALL DIMENSIONS ARE IN INCHES & MILLIMETERS

UNITS	C	P <sup>2</sup>	V MIN	AG	AH	BE	BV	EW +.002	EX -.005	XO	XR
IN	37.13	18.38	4.50	32.63	4.50	.69	11.06	.375	.750	21.00	.03
MM	943	467	114	829	114	18	281	9.53	19.05	533	.8

FRAME	UNITS	U -.001	AJ	AK	BB MIN	BD MAX	BF	ES MIN	EU -.005	SQ KEY
324,326VP	IN	1.625	14.750	13.500	.25	16.50	.69	3.16	1.250	.375
	MM	41.28	374.65	342.90	6	419	18	80	31.75	9.53
324,326VPH	IN	1.625	9.125	8.250	.19	12.00	.44	3.16	1.250	.375
	MM	41.28	231.78	209.55	5	305	11	80	31.75	9.53

UNITS	CONDUIT BOX MATERIAL	AA	AB	AC	AF
IN	STEEL	3.00	15.75	11.50	3.38
MM			400	292	86
IN	CAST IRON	3 NPT	16.50	12.19	4.63
MM			419	310	118

TOLERANCES	8.250 AK	13.500 AK
"AK" DIMENSION	+.003;-.000	+.005;-.000
FACE RUNOUT	.004 T.I.R.	.007 T.I.R.
PERMISSIBLE ECCENTRICITY OF MOUNTING RABBET	.004 T.I.R.	.007 T.I.R.
PERMISSIBLE SHAFT RUNOUT	.002 T.I.R.	.002 T.I.R.

1: ALL ROUGH DIMENSIONS MAY VARY BY .25" DUE TO CASTING AND/OR FABRICATION VARIATIONS.  
2: LARGEST MOTOR WIDTH.

3: CONDUIT OPENINGS MAY BE LOCATED IN STEPS OF 90~ REGARDLESS OF LOCATION. STANDARD AS SHOWN WITH CONDUIT OPENING DOWN.  
4: TOLERANCES SHOWN ARE IN INCHES ONLY.

09-2336/B

**Nidec Motor Corporation**  
St. Louis, Missouri

INFORMATION DISCLOSED ON THIS DOCUMENT IS CONSIDERED PROPRIETARY AND SHALL NOT BE REPRODUCED OR DISCLOSED WITHOUT WRITTEN CONSENT OF NIDEC MOTOR CORPORATION



ISSUED BY  
**R. KING**  
APPROVED BY  
**S. PALMER**

IHP\_DP\_NMCA (MAR-2011) SOLIDEDGE