

EFFECTIVE:  
**26-JUL-11**

# VERTICAL MOTORS

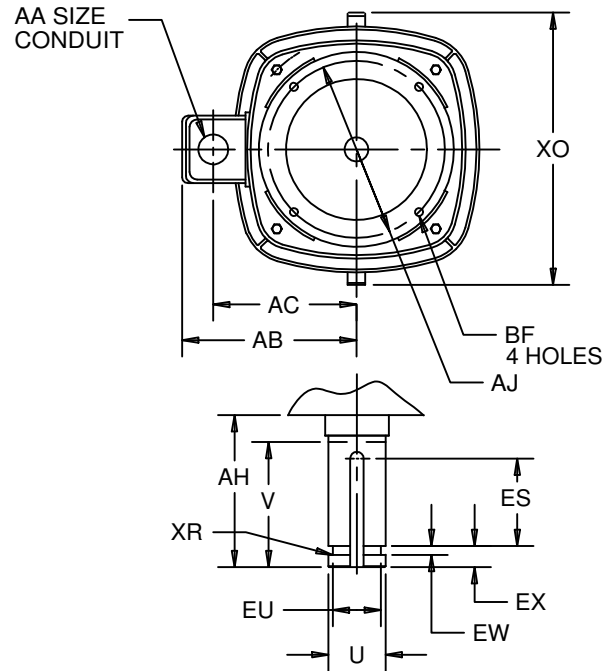
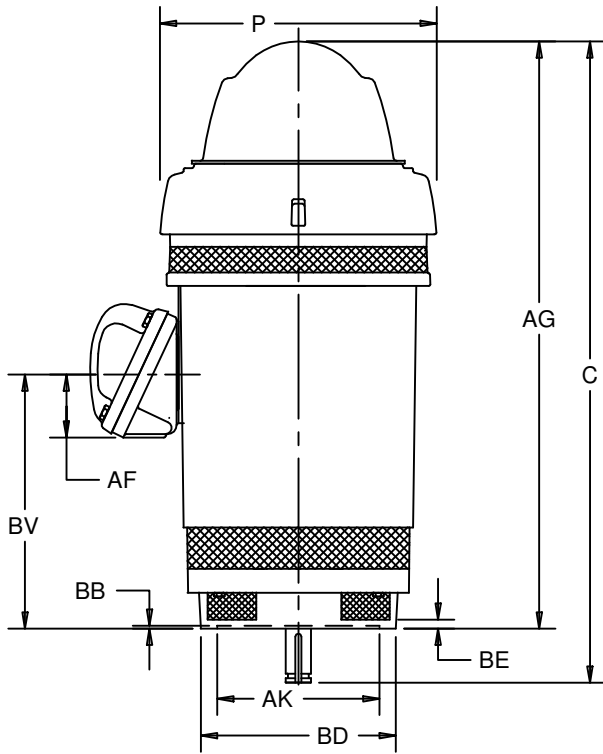
## WEATHER PROTECTED TYPE I

PRINT:  
**09-2339**

SUPERSEDES:  
**02-NOV-01**

FRAME: 444, 445VPA  
BASIC TYPE: RV4

SHEET:  
**1 OF 1**



ALL DIMENSIONS ARE IN INCHES & MILLIMETERS

UNITS	C	P <sup>2</sup>	V MIN	AG	AH	BE	BV	EW +.002	EX -.005	XO	XR
IN	52.31	22.88	4.50	47.81	4.50	.75	21.16	.375	.750	25.88	.03
mm	1329	581	114	1214	114	19	537	9.53	19.05	657	.8

FRAME	UNITS	U -.001	AJ	AK +.005	BB MIN	BD MAX	BF	ES MIN	EU -.005	SQ KEY
444,445VP	IN	2.125	14.750	13.500	.25	16.50	.69	3.09	1.750	.500
	mm	53.98	374.65	342.90	6	419	18	78	44.45	12.70
444,445VPA	IN	2.125	14.750	13.500	.25	20.00	.69	3.09	1.750	.500
	mm	53.98	374.65	342.90	6	508	18	78	44.45	12.70

UNITS	CONDUIT BOX MATERIAL	AA	AB	AC	AF
IN	STEEL	3.00	18.81	14.38	4.72
mm		76	478	365	120
IN	CAST IRON	3 1/2 NPT	18.44	14.25	5.28
mm			468	362	134

- 1: ALL ROUGH DIMENSIONS MAY VARY BY .25" DUE TO CASTING AND/OR FABRICATION VARIATIONS.
- 2: LARGEST MOTOR WIDTH.
- 3: CONDUIT OPENINGS MAY BE LOCATED IN STEPS OF 90° REGARDLESS OF LOCATION. STANDARD AS SHOWN WITH CONDUIT OPENING DOWN.
- 4: TOLERANCES SHOWN ARE IN INCHES ONLY.

TOLERANCES	
FACE RUNOUT	.007 T.I.R.
PERMISSIBLE ECCENTRICITY OF MOUNTING RABBET	.007 T.I.R.
PERMISSIBLE SHAFT RUNOUT	.002 T.I.R.

09-2339/A

**Nidec Motor Corporation**  
St. Louis, Missouri

INFORMATION DISCLOSED ON THIS DOCUMENT IS CONSIDERED PROPRIETARY AND SHALL NOT BE REPRODUCED OR DISCLOSED WITHOUT WRITTEN CONSENT OF NIDEC MOTOR CORPORATION



ISSUED BY  
**E. WENDT**  
APPROVED BY  
**K. POTTER**

IHP\_DP\_NMCA (MAR-2011) SOLIDEDGE