

EFFECTIVE:  
**20-JUL-11**

# VERTICAL MOTORS

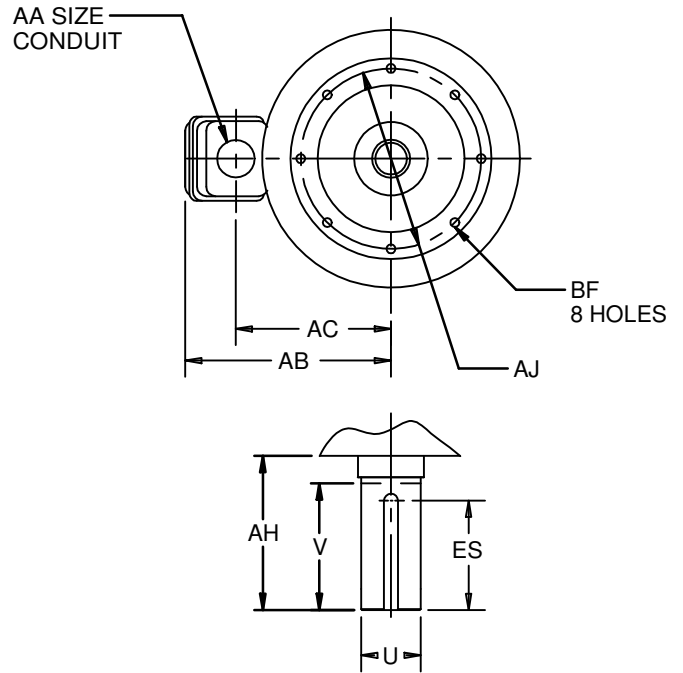
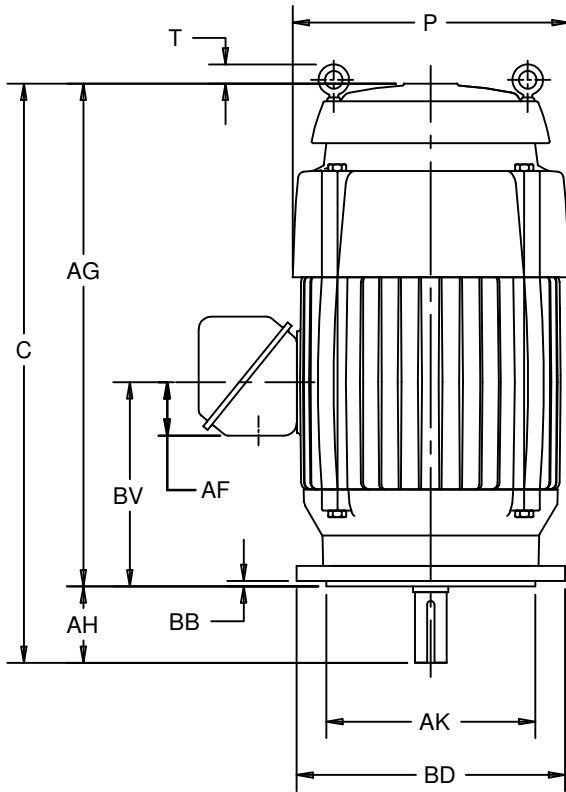
TOTALLY ENCLOSED FAN COOLED

PRINT:  
**09-2347**

SUPERSEDES:  
**31-AUG-04**

FRAME: 364, 365TCV  
BASIC TYPE: TV

SHEET:  
**1 OF 1**



ALL DIMENSIONS ARE IN INCHES AND MILLIMETERS

UNITS	C	P <sup>2</sup>	T	U -.001	V MIN	AA	AB	AC	AF	AG	AH	AJ	AK -.005
IN	37.38	18.75	1.31	2.375	5.69	3 NPT	16.50	12.19	3.38	31.75	5.63	11.000	12.500
MM	949	476	33	60.33	145		419	310	86	806	143	279.40	317.50

UNITS	BB MIN	BD MAX	BF <sup>3</sup>	BV	ES MIN	SQ KEY
IN	.25	14.00	5/8 11 X .94	12.50	4.28	.625
MM	6	356		318	109	15.88

TOLERANCES	
FACE RUNOUT	.007 T.I.R.
PERMISSIBLE ECCENTRICITY OF MOUNTING RABBET	.007 T.I.R.
PERMISSIBLE SHAFT RUNOUT	.003 T.I.R.

- 1: ALL ROUGH DIMENSIONS MAY VARY BY .25" DUE TO CASTING AND/OR FABRICATION VARIATIONS.
- 2: LARGEST MOTOR WIDTH.
- 3: TAP SIZE AND BOLT PENETRATION ALLOWANCE.
- 4: ALL TAPPED HOLES ARE UNIFIED NATIONAL COARSE, RIGHT HAND THREAD.

- 5: CONDUIT OPENING MAY BE LOCATED IN STEPS OF 90 DEGREES, STANDARD AS SHOWN WITH CONDUIT OPENING DOWN.
- 6: TOLERANCES SHOWN ARE IN INCHES ONLY.

09-2347/B

**Nidec Motor Corporation**  
St. Louis, Missouri

INFORMATION DISCLOSED ON THIS DOCUMENT IS CONSIDERED PROPRIETARY AND SHALL NOT BE REPRODUCED OR DISCLOSED WITHOUT WRITTEN CONSENT OF NIDEC MOTOR CORPORATION



ISSUED BY  
**E. WENDT**  
APPROVED BY  
**K. POTTER**

IHP\_DP\_NMCA (MAR-2011) SOLIDEDGE