

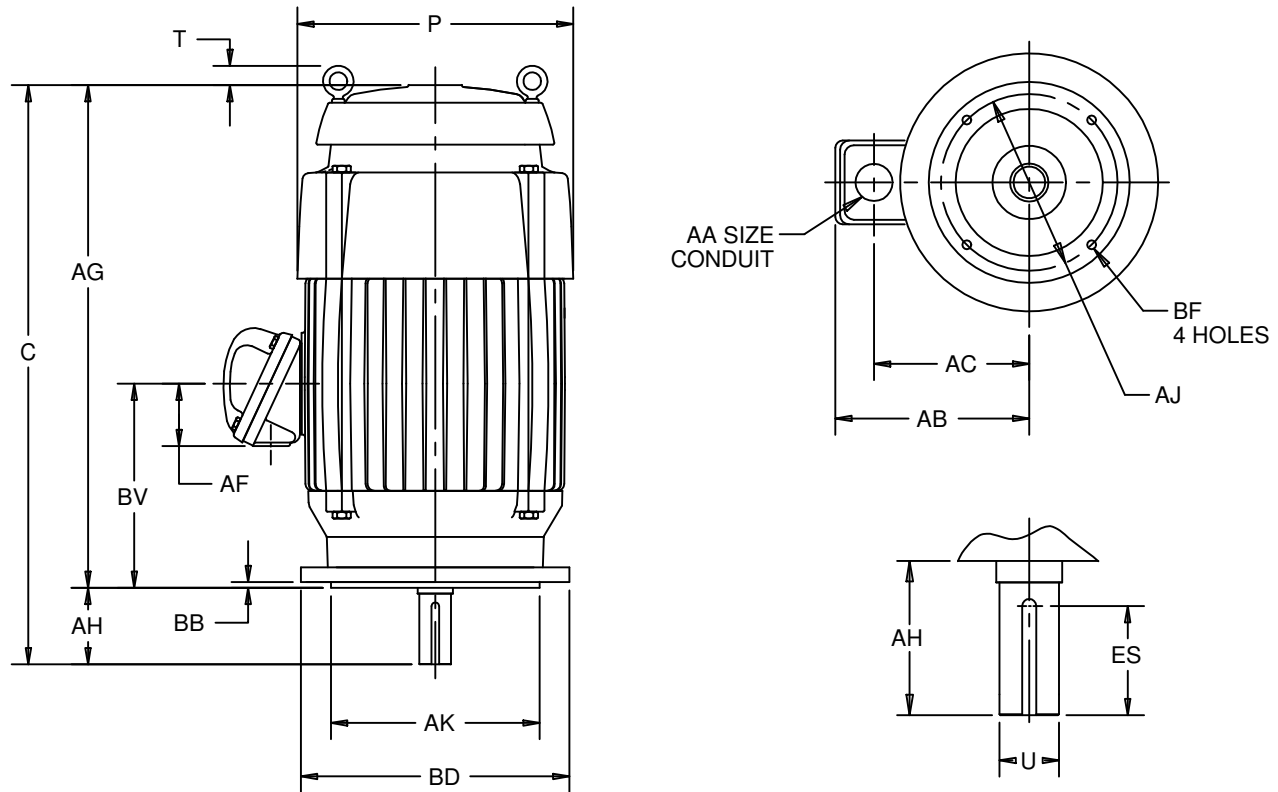
EFFECTIVE:
21-JUL-11

SUPERSEDES:
23-JAN-06

VERTICAL MOTORS
TEFC - CORRODUTY
FRAME: 284, 286TC, TCV
BASIC TYPE: TC, TV

PRINT:
09-2352

SHEET:
1 OF 1



ALL DIMENSIONS ARE IN INCHES AND MILLIMETERS

UNITS	C	P ²	T	U	AA	AB	AC	AF	AG	AH
IN	31.06	14.56	1.50	1.875	1 1/2 NPT	11.94	8.94	2.63	26.69	4.38
MM	789	370	38	47.63		303	227	67	678	111

UNITS	AJ	AK	BB	BD	BF ³	BV	ES	SQ
IN	9.000	10.500	.25	11.25	1/2 13 X .75	10.50	3.28	.500
MM	228.60	266.70	6	286		267	83	12.70

TOLERANCES	
FACE RUNOUT	.004 T.I.R.
PERMISSIBLE ECCENTRICITY OF MOUNTING RABBET	.004 T.I.R.
PERMISSIBLE SHAFT RUNOUT	.002 T.I.R.
FOR SPECIAL SHAFT RUNOUT	.001 T.I.R.

- 1: ALL ROUGH DIMENSIONS MAY VARY BY .25" DUE TO CASTING AND/OR FABRICATION VARIATIONS.
- 2: LARGEST MOTOR WIDTH.
- 3: TAP SIZE AND BOLT PENETRATION ALLOWANCE.
- 4: ALL TAPPED HOLES ARE UNIFIED NATIONAL COARSE, RIGHT HAND THREAD.

- 5: CONDUIT OPENING MAY BE LOCATED IN STEPS OF 90 DEGREES, STANDARD AS SHOWN WITH CONDUIT OPENING DOWN.
- 6: TOLERANCES SHOWN ARE IN INCHES ONLY.

09-2352/C

Nidec Motor Corporation
St. Louis, Missouri

INFORMATION DISCLOSED ON THIS DOCUMENT IS CONSIDERED PROPRIETARY AND SHALL NOT BE REPRODUCED OR DISCLOSED WITHOUT WRITTEN CONSENT OF NIDEC MOTOR CORPORATION



ISSUED BY
E. WENDT
APPROVED BY
K. POTTER

IHP_DP_NMCA (MAR-2011) SOLIDEDGE