

EFFECTIVE:  
**21-JUL-11**

# VERTICAL MOTORS

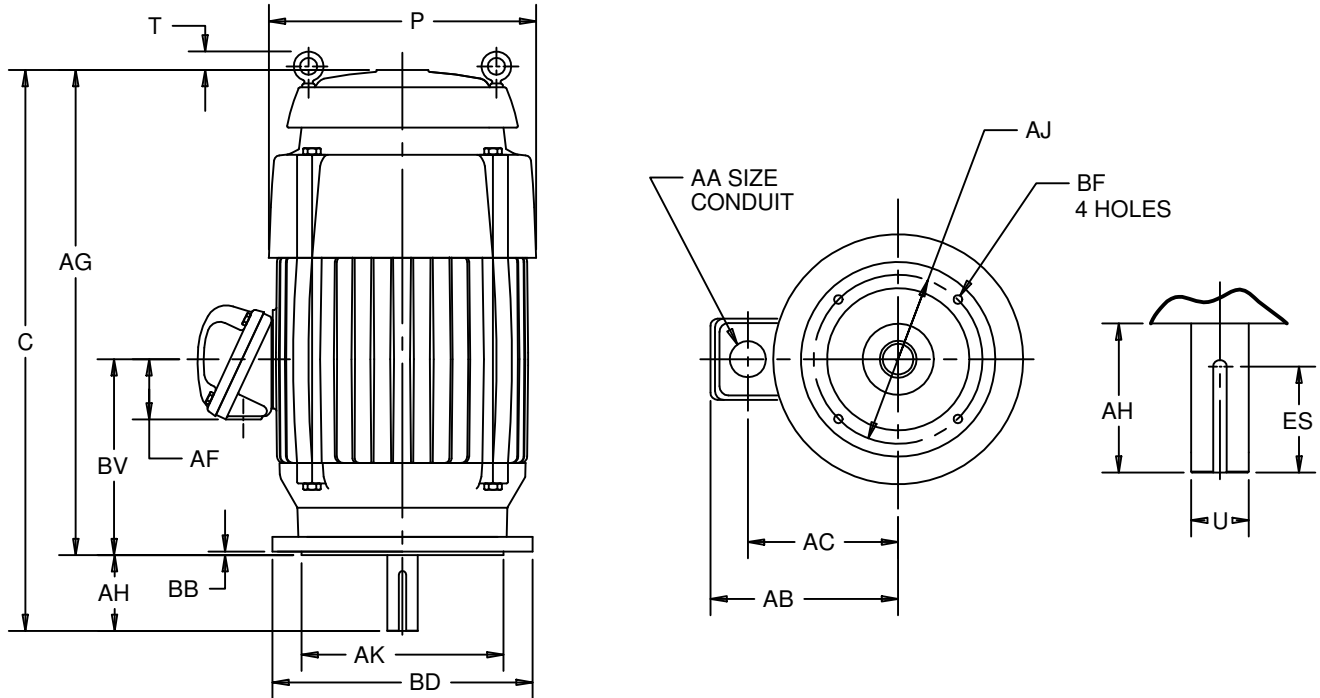
TEFC

PRINT:  
**09-2353**

SUPERSEDES:  
**05-AUG-10**

FRAME: 324, 326TC, TCV  
BASIC TYPE: CEF, TCF, TVC

SHEET:  
**1 OF 1**



ALL DIMENSIONS ARE IN INCHES AND MILLIMETERS

UNITS	C	P <sup>5</sup>	T	U -.001	AA	AB	AC	AF	AG	AH <sup>3</sup>	AJ	AK -.005
IN	34.75	17.00	.88	2.125	2 NPT	14.25	10.75	3.25	29.75	5.00	11.000	12.500
MM	883	432	22	53.98		362	273	83	756	127	279.40	317.50

UNITS	BB MIN	BD MAX	BF <sup>2</sup>	BV	ES MIN	SQ KEY
IN	.25	14.00	5/8 11 X .94	11.50	3.91	.500
MM	6	356		292	99	12.70

- 1: ALL ROUGH DIMENSIONS MAY VARY BY .25" DUE TO CASTING AND/OR FABRICATION VARIATIONS.
- 2: TAP SIZE AND BOLT PENETRATION ALLOWANCE.
- 3: ALL TAPPED HOLES ARE UNIFIED NATIONAL COARSE, RIGHT-HAND THREAD.
- 4: CONDUIT OPENING MAY BE LOCATED IN STEPS OF 90 DEGREES, STANDARD AS SHOWN WITH CONDUIT OPENING DOWN.
- 5: LARGEST MOTOR WIDTH.
- 6: TOLERANCES SHOWN ARE IN INCHES ONLY.

TOLERANCES	
FACE RUNOUT	.007 T.I.R.
PERMISSIBLE ECCENTRICITY OF MOUNTING RABBET	.007 T.I.R.
PERMISSIBLE SHAFT RUNOUT	.003 T.I.R.
FOR SPECIAL SHAFT RUNOUT	.001 T.I.R.

09-2353/C

**Nidec Motor Corporation**  
St. Louis, Missouri

INFORMATION DISCLOSED ON THIS DOCUMENT IS CONSIDERED PROPRIETARY AND SHALL NOT BE REPRODUCED OR DISCLOSED WITHOUT WRITTEN CONSENT OF NIDEC MOTOR CORPORATION



ISSUED BY  
**E. WENDT**  
APPROVED BY  
**K. POTTER**

IHP\_DP\_NMCA (MAR-2011) SOLIDEDGE