

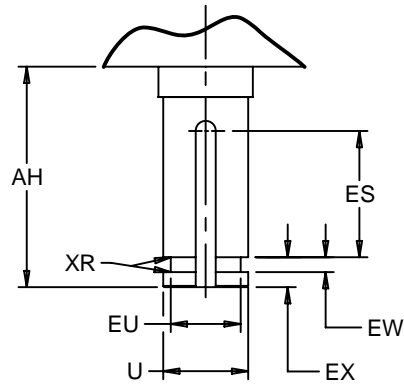
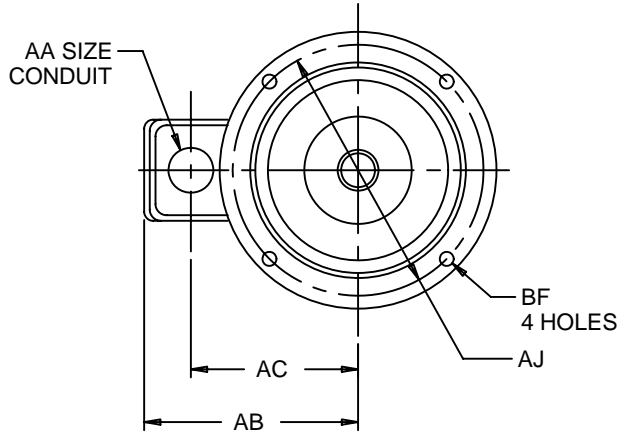
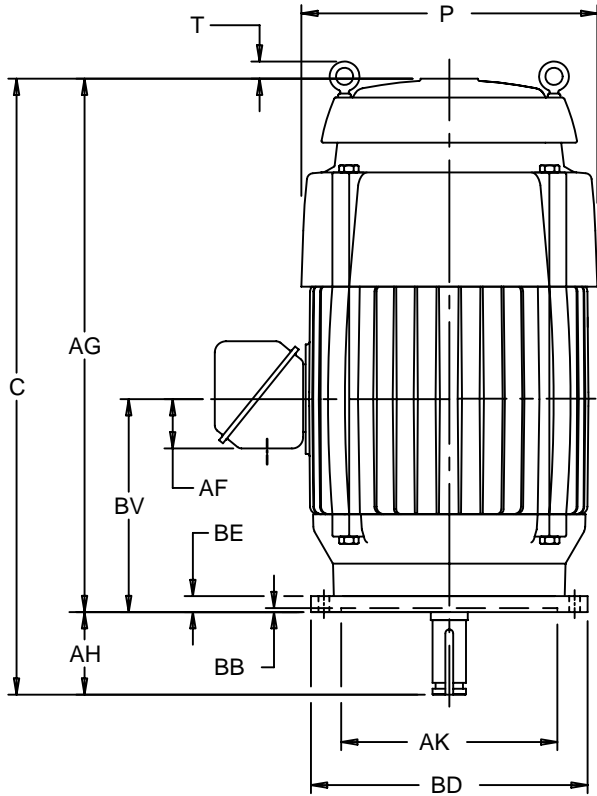
EFFECTIVE:
14-APR-11

SUPERSEDES:
29-APR-02

VERTICAL MOTORS
TEFC - HIGH THRUST
FRAME: 324, 326VP, VPH
BASIC TYPE: TV4

PRINT:
09-2410

SHEET:
1 OF 1



ALL DIMENSIONS ARE IN INCHES AND MILLIMETERS

| UNITS | C | P ² | T | U -.001 | AA | AB | AC | AF | AG |
|-------|-------|----------------|-----|------------|------|-------|-------|------|-------|
| IN | 34.69 | 17.00 | .88 | 1.625 | 2.00 | 13.88 | 10.63 | 3.25 | 30.19 |
| MM | 881 | 432 | 22 | 41.28 | | 353 | 270 | 83 | 767 |

| UNITS | AH ±.063 | BE | BV | ES MIN | EU -.005 | EW +.002 | EX -.005 | XR | SQ KEY |
|-------|-------------|------|-------|-----------|-------------|-------------|-------------|-----|-----------|
| IN | 4.500 | 1.00 | 11.94 | 3.03 | 1.250 | .375 | .750 | .03 | .375 |
| MM | 114.30 | 25 | 303 | 77 | 31.75 | 9.53 | 19.05 | 1 | 9.53 |

| FRAME | UNITS | AJ | AK | BB MIN | BD MAX | BF |
|--------|-------|--------|--------|-----------|-----------|-----|
| 320VP | IN | 14.750 | 13.500 | .25 | 16.50 | .69 |
| | MM | 374.65 | 342.90 | 6 | 419 | 18 |
| 320VPH | IN | 9.125 | 8.250 | .19 | 12.00 | .44 |
| | MM | 231.78 | 209.55 | 5 | 305 | 11 |

1. ALL ROUGH DIMENSIONS MAY VARY BY .25" DUE TO CASTING AND/OR FABRICATION VARIATIONS.
2. LARGEST MOTOR WIDTH.
3. CONDUIT OPENINGS MAY BE LOCATED IN STEPS OF 90 DEGREES REGARDLESS OF LOCATION. STANDARD AS SHOWN WITH CONDUIT OPENING DOWN.
4. TOLERANCES SHOWN ARE IN INCHES ONLY.

| TOLERANCES | 8.250 AK | 13.500 AK |
|---|-------------|-------------|
| FACE RUNOUT | .004 T.I.R. | .007 T.I.R. |
| PERMISSIBLE ECCENTRICITY OF MOUNTING RABBET | .004 T.I.R. | .007 T.I.R. |
| PERMISSIBLE SHAFT RUNOUT | .002 T.I.R. | .002 T.I.R. |
| TOLERANCE ON AK-DIMENSION | +.003 | +.005 |

09-2410/A

Nidec Motor Corporation
St. Louis, Missouri

INFORMATION DISCLOSED ON THIS DOCUMENT IS CONSIDERED PROPRIETARY AND SHALL NOT BE REPRODUCED OR DISCLOSED WITHOUT WRITTEN CONSENT OF NIDEC MOTOR CORPORATION



ISSUED BY
R. KING
APPROVED BY
J. O'BRIEN

IHP_DP_NMCA (MAR-2011) SOLIDEDGE