

EFFECTIVE:  
17-MAR-11

SUPERSEDES:  
18-NOV-09

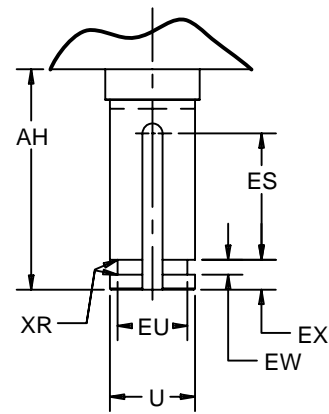
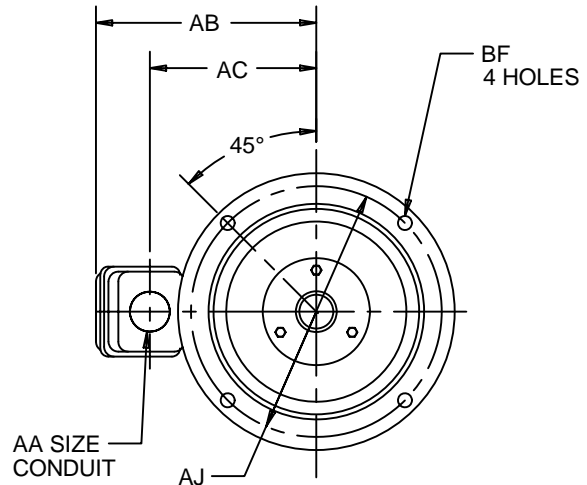
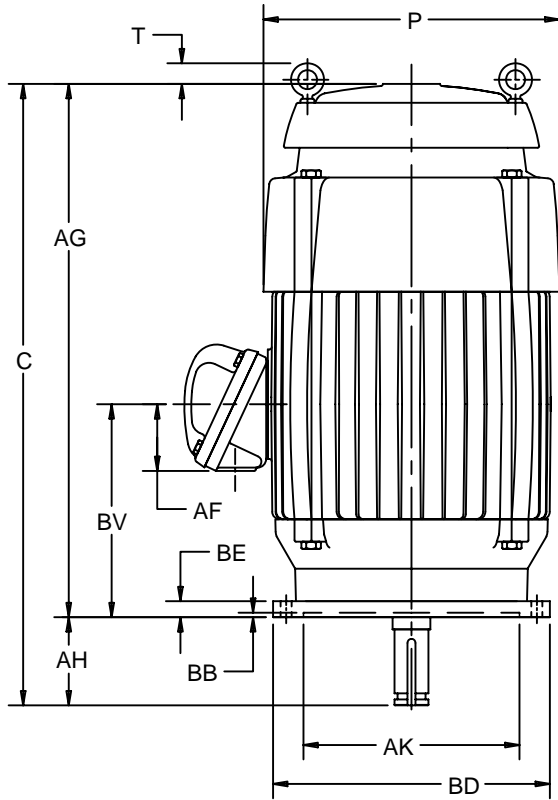
# VERTICAL MOTORS

TEFC - HIGH THRUST WITH CAST IRON OUTLET BOX

FRAME: 364, 365VP, VPZ  
BASIC TYPE: TV4, TVC4

PRINT:  
09-2419

SHEET:  
1 OF 1



ALL DIMENSIONS ARE IN INCHES AND MILLIMETERS

UNITS	C	P <sup>2</sup>	T	AA	AB	AC	AF	AG	AH <sup>3</sup> ±.063	AJ
IN	36.75	18.75	1.31	3 NPT	17.25	12.88	4.63	32.25	4.500	14.750
MM	933	476	33		438	327	118	819	114.30	374.65

UNITS	AK +.005	BB MIN	BD MAX	BE	BF	BV	ES MIN	EW +.002	EX -.005	XR
IN	13.500	.25	16.50	1.00	.69	13.00	3.03	.375	.750	.03
MM	342.90	6	419	25	18	330	77	9.53	19.05	1

FRAME	UNITS	U -.001	EU -.005	SQ KEY
360VP	IN	1.625	1.250	.375
	MM	41.28	31.75	9.53
360VPZ	IN	2.125	1.750	.500
	MM	53.98	44.45	12.70

- 1: ALL ROUGH DIMENSIONS MAY VARY BY .25" DUE TO CASTING AND/OR FABRICATION VARIATIONS.
- 2: LARGEST MOTOR WIDTH.
- 3: CONDUIT OPENING MAY BE LOCATED IN STEPS OF 90 DEGREES. STANDARD AS SHOWN WITH CONDUIT OPENING DOWN.
- 4: TOLERANCES SHOWN ARE IN INCHES ONLY.
- 5: PERMISSIBLE SHAFT RUNOUT: .002 T.I.R. FOR SPECIAL SHAFT RUNOUT: .001 T.I.R. UP TO 1.625" DIAMETER INCLUSIVE. FOR DIAMETERS LARGER THAN 1.625" RUNOUT: .0015 T.I.R.

TOLERANCES	
FACE RUNOUT	.007 T.I.R.
SPECIAL FACE RUNOUT PER API610	.001 T.I.R.
PERMISSIBLE ECCENTRICITY OF MOUNTING RABBET	.007 T.I.R.
PERMISSIBLE SHAFT RUNOUT	SEE NOTE #5

09-2419/D

**Nidec Motor Corporation**  
St. Louis, Missouri

INFORMATION DISCLOSED ON THIS DOCUMENT  
IS CONSIDERED PROPRIETARY AND SHALL NOT BE  
REPRODUCED OR DISCLOSED WITHOUT WRITTEN  
CONSENT OF NIDEC MOTOR CORPORATION



ISSUED BY  
**L. CUESTA**  
APPROVED BY  
**J. LOZANO**

IHP\_DP\_NMCA (MAR-2011) SOLIDEDGE