

EFFECTIVE:
04-APR-11

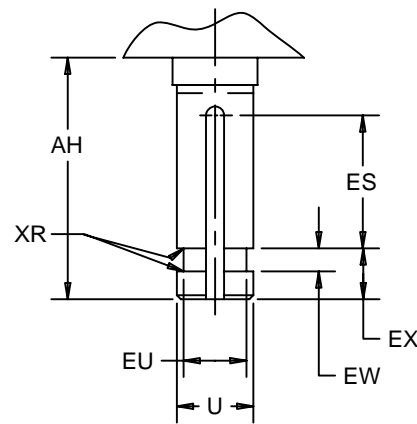
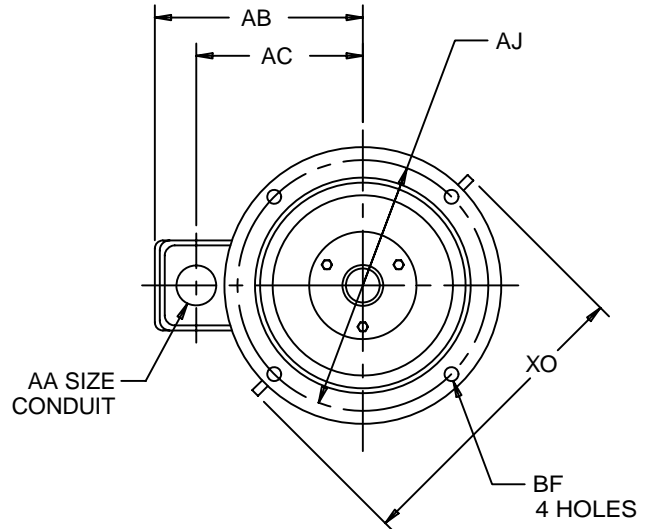
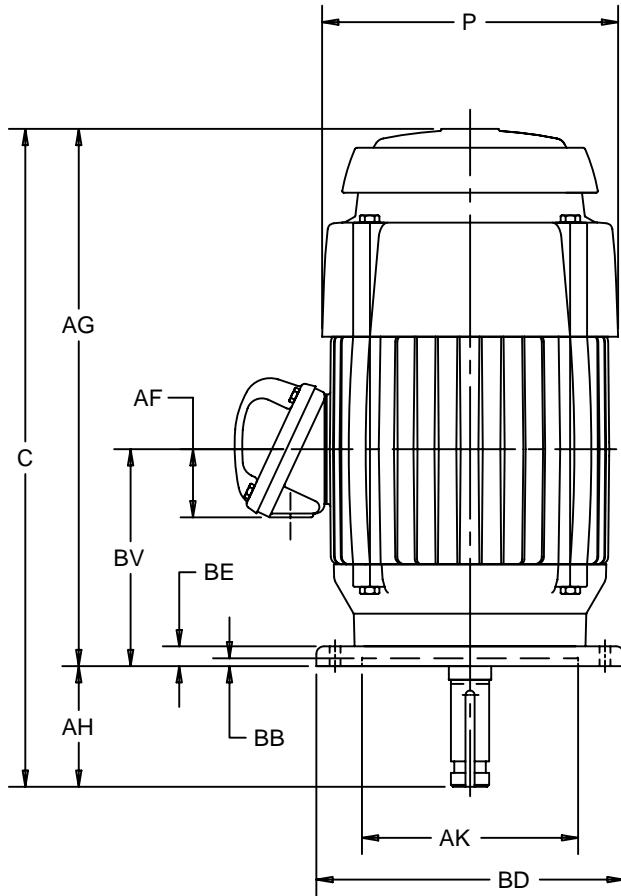
SUPERSEDES:
01-FEB-07

VERTICAL MOTORS

EXPLOSION PROOF - HIGH THRUST
FRAME: 404, 405VP, VPA, VPZ, VPAZ
BASIC TYPE: LV4, NV4

PRINT:
09-2428

SHEET:
1 OF 1



ALL DIMENSIONS ARE IN INCHES AND MILLIMETERS

UNITS	C	P ²	AA	AB	AC	AF	AG	AH ±.063	AJ
IN	50.94	21.19	3 NPT	18.81	13.75	4.56	46.44	4.500	14.750
MM	1294	538		478	349	116	1180	114.30	374.65

UNITS	AK +.005	BB MIN	BE	BF	BV	ES MIN	EW +.002	EX -.005	XO	XR
IN	13.500	.25	1.00	.69	15.63	3.03	.375	.750	24.13	.03
MM	342.90	6	25	18	397	77	9.53	19.05	613	1

FRAME	UNITS	U -.001	EU -.005	SQ KEY
404,405VP,VPA	IN	1.625	1.250	.375
	MM	41.28	31.75	9.53
404,405VPZ,VPAZ	IN	2.125	1.750	.500
	MM	53.98	44.45	12.70

FRAME	UNITS	BD MAX
404,405VP,VPZ	IN	16.50
	MM	419
404,405VPA,VPAZ	IN	20.00
	MM	508

1. ALL ROUGH DIMENSIONS MAY VARY BY .25" DUE TO CASTING AND/OR FABRICATION VARIATIONS.
2. LARGEST MOTOR WIDTH.
3. CONDUIT OPENINGS MAY BE LOCATED IN STEPS OF 90 DEGREES REGARDLESS OF LOCATION. STANDARD AS SHOWN WITH CONDUIT OPENING DOWN.
4. TOLERANCES SHOWN ARE IN INCHES ONLY.
5. PERMISSIBLE SHAFT RUNOUT: .002 T.I.R.
FOR SPECIAL SHAFT RUNOUT: .001 T.I.R. UP TO 1.625" DIAMETER INCLUSIVE.
FOR DIAMETERS LARGER THAN 1.625", .0015 T.I.R.

TOLERANCES	
FACE RUNOUT	.007 T.I.R.
PERMISSIBLE ECCENTRICITY OF MOUNTING RABBET	.007 T.I.R.
PERMISSIBLE SHAFT RUNOUT	SEE NOTE #5

09-2428/D

Nidec Motor Corporation
St. Louis, Missouri

INFORMATION DISCLOSED ON THIS DOCUMENT IS CONSIDERED PROPRIETARY AND SHALL NOT BE REPRODUCED OR DISCLOSED WITHOUT WRITTEN CONSENT OF NIDEC MOTOR CORPORATION



ISSUED BY
R. KING
APPROVED BY
K. POTTER

IHP_DP_NMCA (MAR-2011) SOLIDEDGE