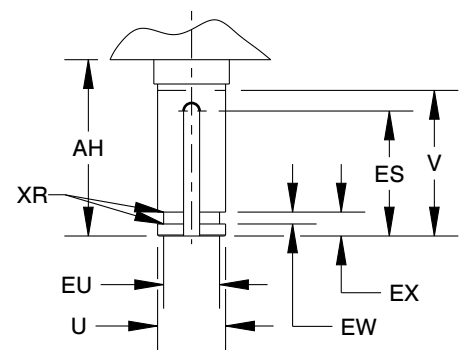
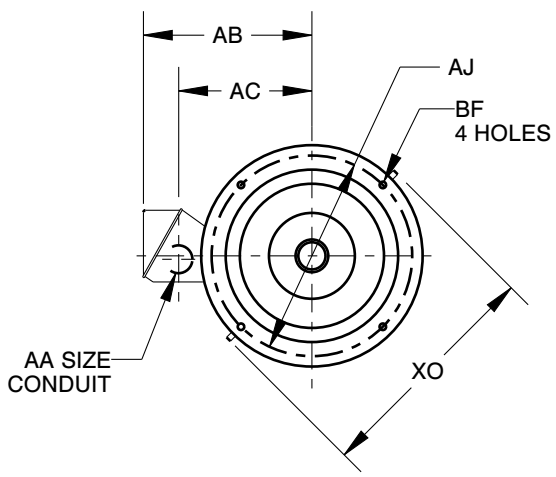
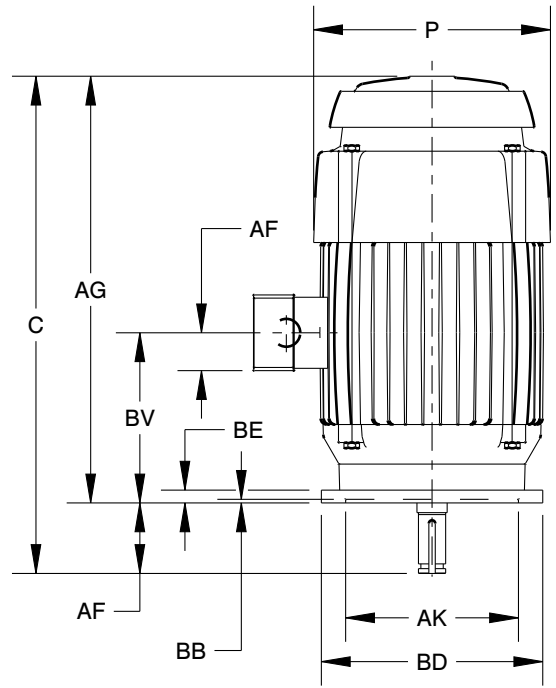


EFFECTIVE:
14-JUN-11
 SUPERSEDES:
13-AUG-02

VERTICAL MOTORS

TEFC, IN-LINE PUMP
 FRAME: 254,256HP,LP,HPH
 BASIC TYPE: TV9,TVE9,TVI9,TVS9

PRINT:
09-2432
 SHEET:
1 OF 1



	C	P ⁴	V _{MIN}	AA	AB	AC	AF	AG	AH _{±.031}	AJ	AK _{+.003}
IN	26.88	13.31	2.75	1.25	10.25	7.88	2.03	24.13	2.750	9.125	8.250
MM	683	338	70		260	200	52	613	69.85	231.78	209.55

	BB _{MIN}	BE	BF	BV	ES _{MIN}	EW _{+.002}	EX _{-.005}	XO	XR
IN	.19	1.00	.44	10.44	1.28	.375	.750	14.69	.03
MM	5	25	11	265	.33	9.53	19.05	373	1

FRAME	UNITS	U	BD _{MAX}	EU _{-.005}	SQ KEY
254,256HP	IN	1.1250	10.00	.875	.250
	MM	28.575	254	22.23	6.35
254,256LP	IN	1.625	10.00	1.250	.375
	MM	41.28	254	31.75	9.53
254,256HPH	IN	1.1250	12.00	.875	.250
	MM	28.575	305	22.23	6.35

TOLERANCES	
FACE RUNOUT	.004 T.I.R.
PERMISSIBLE ECCENTRICITY OF MOUNTING RABBET	.004 T.I.R.
PERMISSIBLE SHAFT RUNOUT	.001 T.I.R.
PERMISSIBLE SHAFT END PLAY	.0015 MAX

1: ALL ROUGH CASTING DIMENSIONS MAY VARY .25" DUE TO CASTING AND/OR FABRICATION VARIATIONS.
 2: SHAFT EXTENSION DIAMETER TOLERANCE:
 +.0000; -.0005 TO 1 1/2" INCLUSIVE.
 LARGE DIAMETERS: +.000; -.001.

3: CONDUIT OPENINGS MAY BE LOCATED IN STEPS OF 90° REGARDLESS OF LOCATION. STANDARD AS SHOWN WITH CONDUIT OPENING DOWN.
 4: LARGEST MOTOR WIDTH
 5: TOLERANCES SHOWN ARE IN INCHES ONLY.

09-2432/A

Nidec Motor Corporation
 St. Louis, Missouri

INFORMATION DISCLOSED ON THIS DOCUMENT IS CONSIDERED PROPRIETARY AND SHALL NOT BE REPRODUCED OR DISCLOSED WITHOUT WRITTEN CONSENT OF NIDEC MOTOR CORPORATION



ISSUED BY
P. INGALE
 APPROVED BY
E. LIZANA

IHP_DP_NMCA (MAR-2011) PROENGINEER