

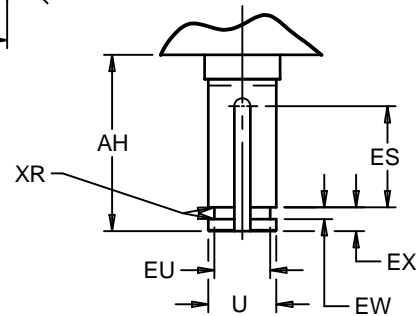
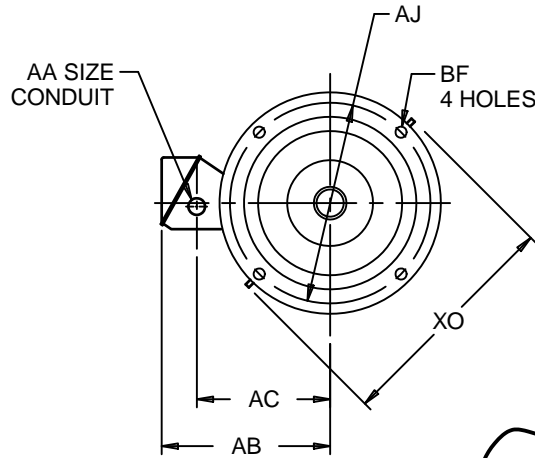
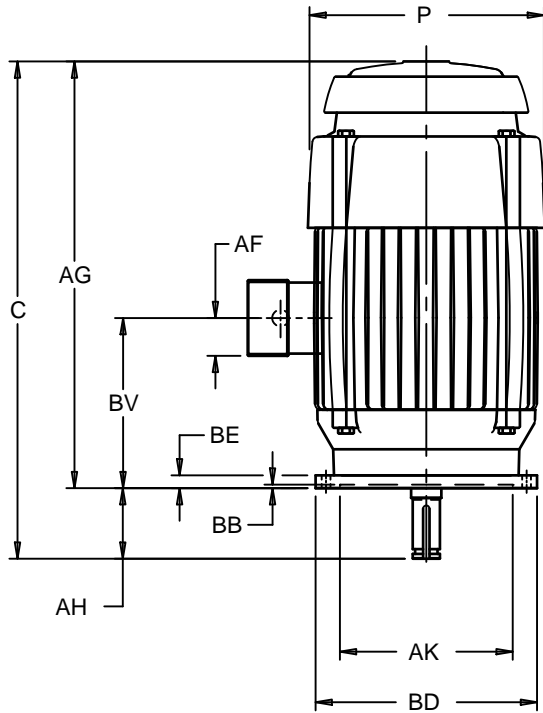
EFFECTIVE:  
11-AUG-14

SUPERSEDES:  
23-AUG-12

**DIMENSION PRINT**  
TEFC, IN-LINE PUMP  
FRAME: 284HP THRU 286HPHA  
BASIC TYPE: TV9

PRINT:  
09-2433

SHEET:  
1 OF 1



ALL DIMENSIONS ARE IN INCHES AND MILLIMETERS

UNITS	P <sup>4</sup>	AA	AB	AC	AF	AG	BE	BV	EW +.002	EX -.005	XO	XR
IN	13.38	1.50	11.07	8.32	2.59	26.63	1.00	16.31	.375	.750	15.88	.03
MM	340		281	211	66	676	25	414	9.53	19.05	403	1

FRAME	UNITS	C	U <sup>2</sup>	AH ±.031	AJ	AK	BB MIN	BD MAX	BF	ES MIN	EU -.005	SQ KEY
284, 286HP	IN	29.38	1.1250	2.750	9.125	8.250	.19	10.00	.44	1.28	.875	.250
	MM	746	28.575	69.85	231.78	209.55	5	254	11	33	22.23	6.35
284, 286LP	IN	31.13	2.125	4.500	9.125	8.250	.19	10.00	.44	3.03	1.750	.500
	MM	791	53.98	114.30	231.78	209.55	5	254	11	77	44.45	12.70
284, 286HPH	IN	31.13	1.625	4.500	14.750	13.500	.25	16.50	.69	3.03	1.250	.375
	MM	791	41.28	114.30	374.65	342.90	6	419	18	77	31.75	9.53
284, 286LPH	IN	31.13	2.125	4.500	14.750	13.500	.25	16.50	.69	3.03	1.750	.500
	MM	791	53.98	114.30	374.65	342.90	6	419	18	77	44.50	12.70
284, 286HPHA	IN	31.13	1.625	4.500	9.125	8.250	.19	12.00	.44	3.03	1.250	.375
	MM	791	41.28	114.30	231.78	209.55	5	305	11	77	31.75	9.53

- ALL ROUGH CASTING DIMENSIONS MAY VARY BY .25" DUE TO CASTING VARIATIONS.
- SHAFT EXTENSION DIAMETER TOLERANCE: +.0000; -.0005 TO 1-1/2" INCLUSIVE. LARGE DIAMETERS; +.000; -.001.
- CONDUIT OPENING MAY BE LOCATED IN STEPS OF 90 DEGREES. STANDARD AS SHOWN WITH CONDUIT OPENING DOWN.
- LARGEST MOTOR WIDTH.
- TOLERANCES SHOWN ARE IN INCHES ONLY.
- PREMIUM EFFICIENCY (TVS9, TVI9) ONLY.

TOLERANCES	8.250 AK, HP	13.500 AK, HP	8.250 AK, LP	13.500 AK, LP
FACE RUNOUT	.004 T.I.R.	.006 T.I.R.	.004 T.I.R.	.004 T.I.R.
PERMISSIBLE ECCENTRICITY OF MOUNTING RABBET	.004 T.I.R.	.006 T.I.R.	.004 T.I.R.	.004 T.I.R.
PERMISSIBLE SHAFT RUNOUT	.002 T.I.R.	.002 T.I.R.	.001 T.I.R.	.001 T.I.R.
PERMISSIBLE SHAFT ENDPLAY	.010 MAX	.010 MAX	.0015 MAX	.0015 MAX
"AK" DIMENSION	+.003; -.000	+.005; -.000	+.003; -.000	+.005; -.000

09-2433/C

**Nidec Motor Corporation**  
St. Louis, Missouri

INFORMATION DISCLOSED ON THIS DOCUMENT IS CONSIDERED PROPRIETARY AND SHALL NOT BE REPRODUCED OR DISCLOSED WITHOUT WRITTEN CONSENT OF NIDEC MOTOR CORPORATION



ISSUED BY  
**R. KING**  
APPROVED BY  
**J. O'BRIEN**

IHP\_DP\_NMCA (MAR-2011) SOLIDEDGE