

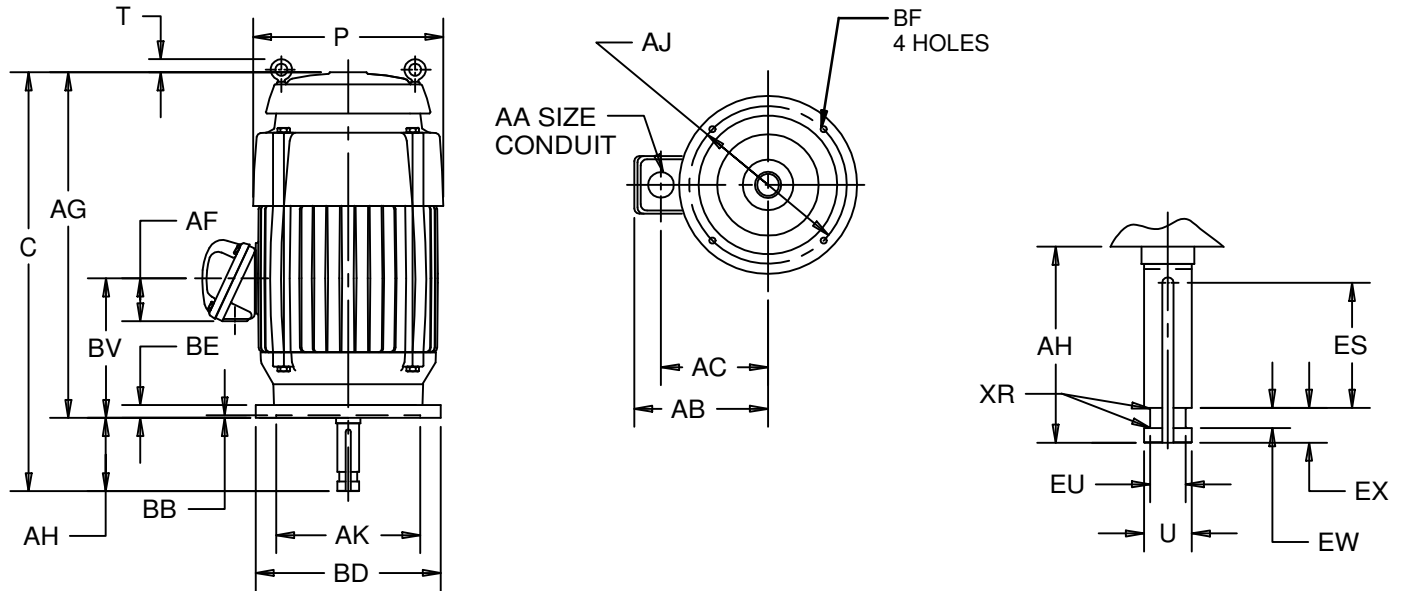
EFFECTIVE:
22-JUL-11

SUPERSEDES:
06-OCT-03

VERTICAL MOTORS
TEFC - CORRODUTY, IN-LINE PUMP
FRAME: 284, 286LP, LPH, HPZ, HPHZ, HPH, HP
BASIC TYPE: TVC9

PRINT:
09-2441

SHEET:
1 OF 1



ALL DIMENSIONS ARE IN INCHES AND MILLIMETERS

| UNITS | P | T | AA | AB | AC | AF |
|-------|-------|------|-------|-------|------|------|
| IN | 14.56 | 1.50 | 2 NPT | 13.19 | 9.69 | 3.25 |
| MM | 370 | 38 | | 335 | 246 | 83 |

| UNITS | AG | BE | BV | ES MIN | EW +.002 | EX -.005 | XR |
|-------|-------|-----|-------|-----------|-------------|-------------|-----|
| IN | 27.38 | .91 | 11.19 | 3.03 | .375 | .750 | .03 |
| MM | 695 | 23 | 284 | 77 | 9.53 | 19.05 | 1 |

| FRAME | UNITS | C | U | AH ±.031 | AJ | AK | BB MIN | BD MAX | BF | EU -.005 | SQ KEY |
|-------------|-------|-------|--------|-------------|--------|--------|-----------|-----------|-----|-------------|-----------|
| 284,286LP | IN | 31.88 | 2.125 | 4.500 | 9.125 | 8.250 | .19 | 10.00 | .44 | 1.750 | .500 |
| | MM | 810 | 53.98 | 114.30 | 231.78 | 209.55 | 5 | 254 | 11 | 44.45 | 12.70 |
| 284,286LPH | IN | 31.88 | 2.125 | 4.500 | 14.750 | 13.500 | .25 | 16.50 | .69 | 1.750 | .500 |
| | MM | 810 | 53.98 | 114.30 | 374.65 | 342.90 | 6 | 406 | 18 | 44.45 | 12.70 |
| 284,286HPZ | IN | 31.88 | 1.625 | 4.500 | 9.125 | 8.250 | .19 | 10.00 | .44 | 1.250 | .375 |
| | MM | 810 | 41.28 | 114.30 | 231.78 | 209.55 | 5 | 254 | 11 | 31.75 | 9.53 |
| 284,286HPHA | IN | 31.88 | 1.625 | 4.500 | 9.125 | 8.250 | .19 | 12.00 | .44 | 1.250 | .375 |
| | MM | 810 | 41.28 | 114.30 | 231.78 | 209.55 | 5 | 305 | 11 | 31.75 | 9.53 |
| 284,286HPH | IN | 31.88 | 1.625 | 4.500 | 14.750 | 13.500 | .25 | 16.50 | .69 | 1.250 | .375 |
| | MM | 810 | 41.28 | 114.30 | 374.65 | 342.90 | 6 | 419 | 18 | 31.75 | 9.53 |
| 284,286HP | IN | 30.13 | 1.1250 | 2.750 | 9.125 | 8.250 | .19 | 10.00 | .44 | .875 | .250 |
| | MM | 765 | 28.575 | 69.85 | 231.78 | 209.55 | 5 | 254 | 11 | 22.23 | 6.35 |

- ALL ROUGH DIMENSIONS MAY VARY BY .25" DUE TO CASTING AND/OR FABRICATION VARIATIONS.
- LARGEST MOTOR WIDTH.
- CONDUIT OPENINGS MAY BE LOCATED IN STEPS OF 90 DEGREES REGARDLESS OF LOCATION. STANDARD AS SHOWN WITH CONDUIT OPENING DOWN.
- TOLERANCES SHOWN ARE IN INCHES ONLY.
- SHAFT EXTENSION DIAMETER TOLERANCE: +.0000/-0.0005 UP TO 1 1/2 INCLUSIVE. LARGER DIAMETERS: +.000/-0.001.

| TOLERANCES | 8.250 AK | 13.500 AK |
|---|-------------|-------------|
| FACE RUNOUT | .004 T.I.R. | .007 T.I.R. |
| PERMISSIBLE ECCENTRICITY OF MOUNTING RABBET | .004 T.I.R. | .007 T.I.R. |
| PERMISSIBLE SHAFT RUNOUT | .001 T.I.R. | .002 T.I.R. |
| MAXIMUM SHAFT END PLAY | .0015 | .0015 |
| TOLERANCE ON AK-DIMENSION | +.003 | +.005 |

09-2441/D

Nidec Motor Corporation
St. Louis, Missouri

INFORMATION DISCLOSED ON THIS DOCUMENT IS CONSIDERED PROPRIETARY AND SHALL NOT BE REPRODUCED OR DISCLOSED WITHOUT WRITTEN CONSENT OF NIDEC MOTOR CORPORATION



ISSUED BY
E. WENDT
APPROVED BY
K. POTTER

IHP_DP_NMCA (MAR-2011) SOLIDEDGE