

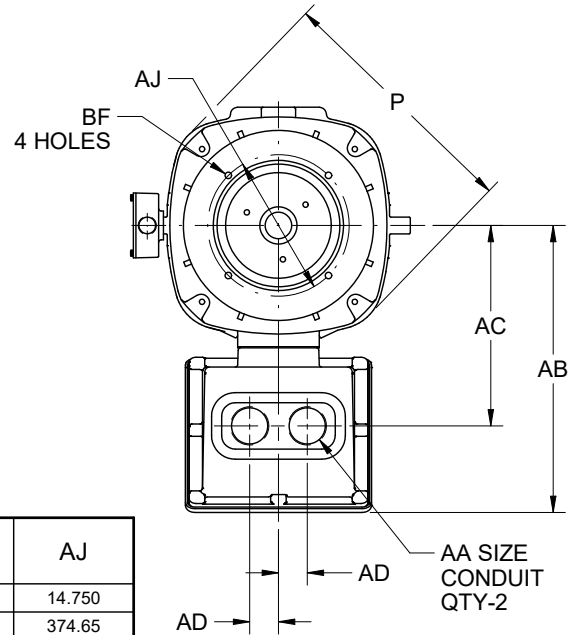
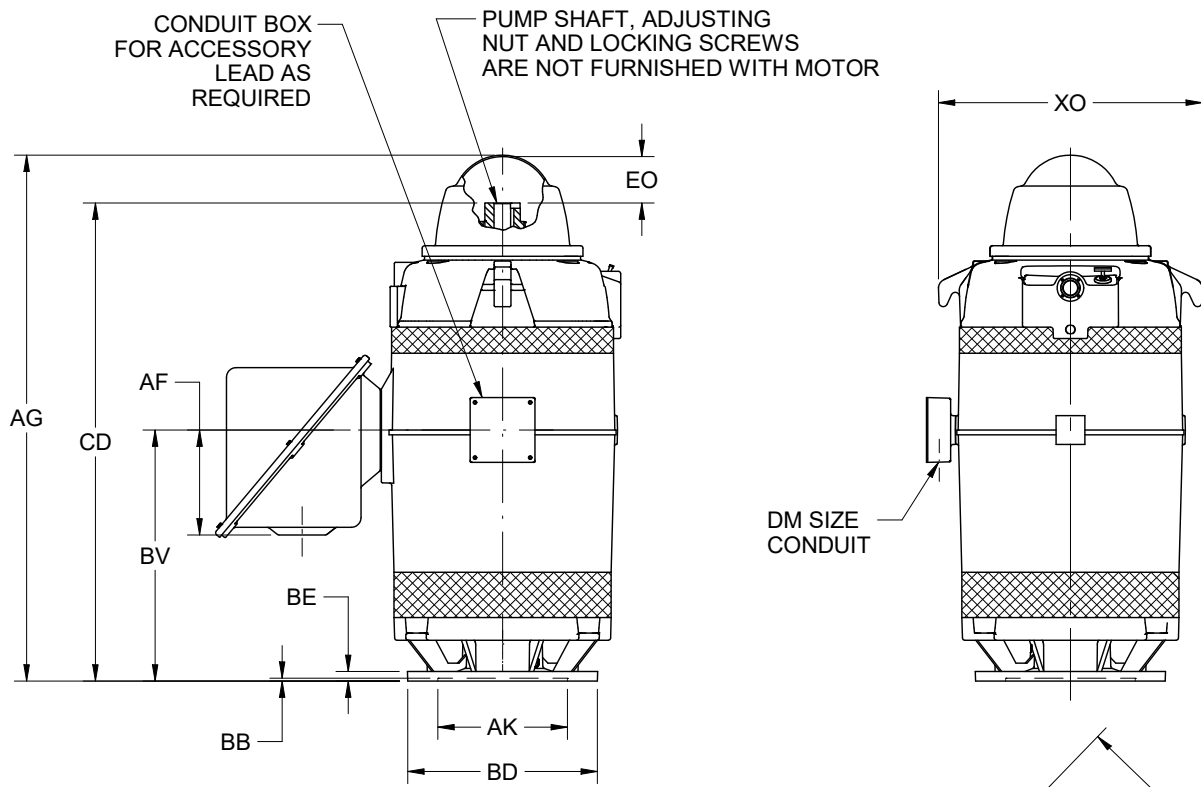
EFFECTIVE:
28-APR-22

DIMENSION PRINT
WEATHER PROTECTED TYPE I
FRAME: 447TP, TPA, TPB
BASIC TYPE: RU

PRINT:
09-2628-19

SUPERSEDES:
31-MAR-11

SHEET:
1 OF 1



ALL DIMENSIONS ARE IN INCHES AND MILLIMETERS

FRAME	UNITS	BD MAX	AA		DM	
447TP	IN	16.50	2 NPT	3/4 NPT	3/4 NPT	1 NPT
	MM	419				
447TPA	IN	20.00	2 1/2 NPT	1 NPT	1 1/2 NPT	1 1/2 NPT
	MM	508				
447TPB	IN	24.50	3 NPT	1 1/2 NPT	1 1/2 NPT	1 1/2 NPT
	MM	622				

UNITS	P ²	AB	AC	AD	AF	AG	AJ
IN	26.94	29.25	20.88	3.00	10.94	55.00	14.750
MM	684	743	530	76	278	1397	374.65

UNITS	AK +.005	BB MIN	BE	BF	BV	CD	EO	XO
IN	13.500	.25	1.00	.69	26.19	49.78	5.13	27.50
MM	342.90	6	25	18	665	1264	130	699

1. DIMENSIONS MAY VARY .25" DUE TO CASTING AND/OR FABRICATION VARIATIONS.
2. LARGEST MOTOR WIDTH.
3. TOLERANCES ARE IN INCHES.

TOLERANCES	
FACE RUNOUT	.007 T.I.R.
PERMISSIBLE ECCENTRICITY OF MOUNTING RABBET	.007 T.I.R.

09-2628/F

Nidec Motor Corporation
St. Louis, Missouri

INFORMATION DISCLOSED ON THIS DOCUMENT IS CONSIDERED PROPRIETARY AND SHALL NOT BE REPRODUCED OR DISCLOSED WITHOUT WRITTEN CONSENT OF NIDEC MOTOR CORPORATION



ISSUED BY
K. FRIEDMAN
APPROVED BY
J. O'BRIEN

IHP_DP_NMCA (MAR-2011) SOLIDEDGE