

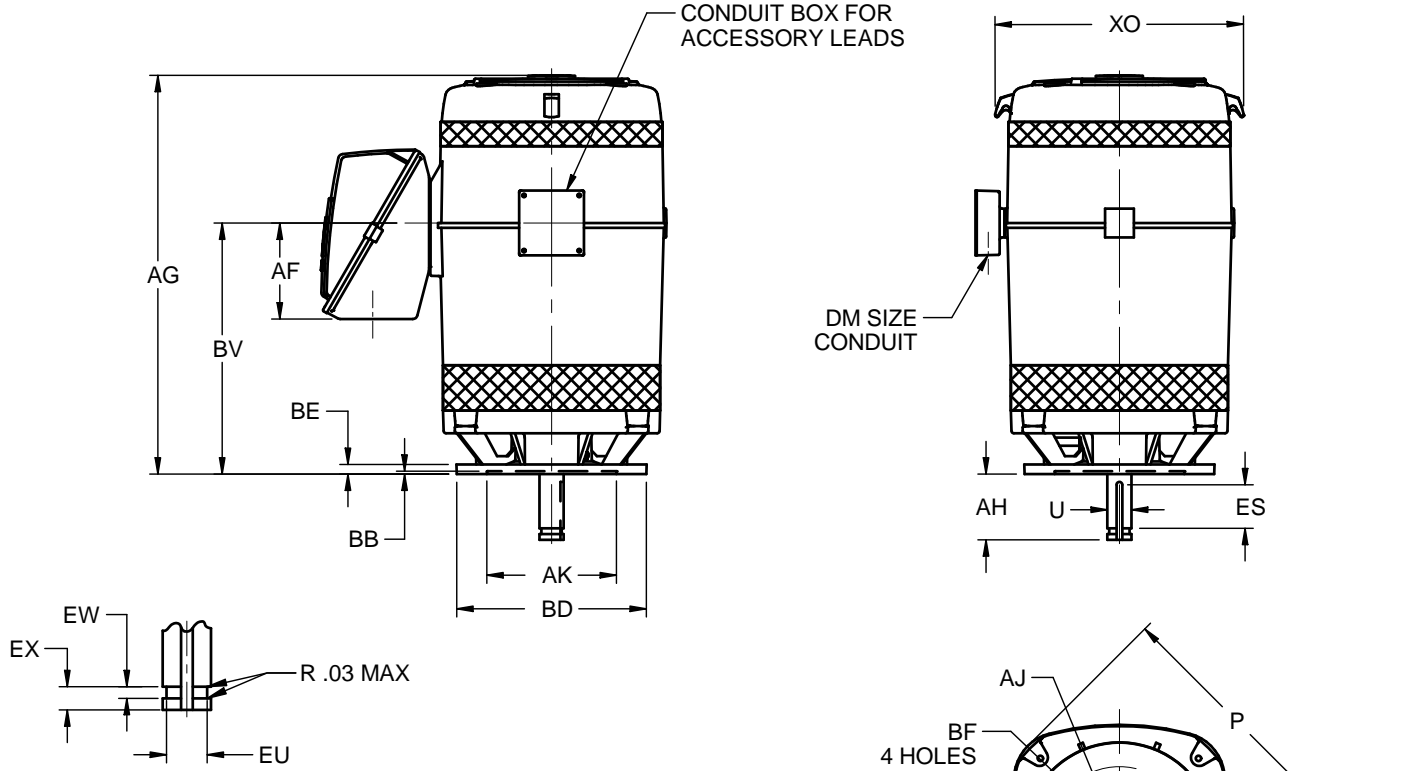
EFFECTIVE:  
**16-MAR-16**

SUPERSEDES:  
**18-SEP-14**

**DIMENSION PRINT**  
WEATHER PROTECTED TYPE I  
FRAME: 447VP, VPA, VPB  
BASIC TYPE: RV

PRINT:  
**09-2630**

SHEET:  
**1 OF 1**



ALL DIMENSIONS ARE IN INCHES AND MILLIMETERS

FRAME	UNITS	BD MAX
447VP	IN	16.50
	MM	419
447VPA	IN	20.00
	MM	508
447VPB	IN	24.50
	MM	622

AA
3 NPT
3 1/2 NPT
4 NPT

DM
3/4 NPT
1 NPT
1 1/4 NPT
1 1/2 NPT

UNITS	P <sup>2</sup>	AB	AC	AF	AG	AJ
IN	26.94	24.25	18.75	10.00	42.00	14.750
MM	684	616	476	254	1067	374.65

UNITS	AK +.005	BB MIN	BE	BF	BV	EW +.002	EX -.005	XO
IN	13.500	.25	1.00	.69	26.19	.375	.750	25.88
MM	342.90	6	25	18	665	9.53	19.05	657

	4-POLE	6-POLE	8-POLE & SLOWER	UNITS	U -.001	AH ±.063	ES MIN	EU -.005	SQ KEY
HP	300 & DOWN	200 & DOWN	ALL	IN	2.125	4.50	3.03	1.750	.500
				MM	53.98	114.30	77	44.45	12.70
	350 TO 400	250	---	IN	2.375	5.00	3.50	2.000	.625
				MM	60.33	127.00	89	50.80	15.88

- 1: DIMENSIONS MAY VARY .25" DUE TO CASTING AND/OR FABRICATION VARIATIONS.
- 2: LARGEST MOTOR WIDTH.
- 3: TOLERANCES SHOWN ARE IN INCHES ONLY.

09-2630/D

**Nidec Motor Corporation**  
St. Louis, Missouri

INFORMATION DISCLOSED ON THIS DOCUMENT IS CONSIDERED PROPRIETARY AND SHALL NOT BE REPRODUCED OR DISCLOSED WITHOUT WRITTEN CONSENT OF NIDEC MOTOR CORPORATION



ISSUED BY  
**R. KING**  
APPROVED BY  
**J. O'BRIEN**

IHP\_DP\_NMCA (MAR-2011) SOLIDEDGE