

EFFECTIVE:
06-MAY-11

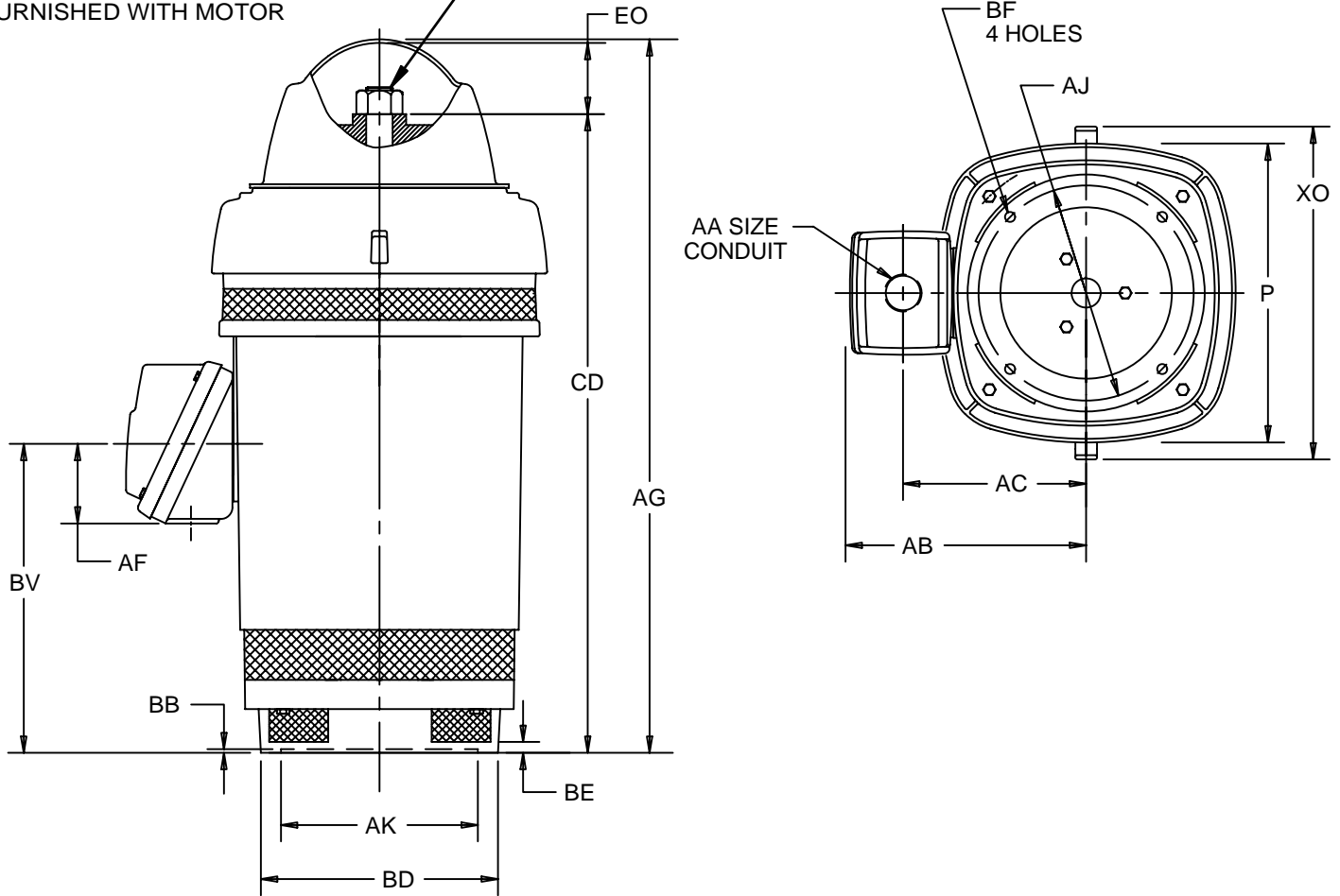
SUPERSEDES:
01-JUN-07

VERTICAL MOTORS
OVERSIZE CAST IRON MAIN OUTLET BOX
FRAME: H444TP THRU H445TPA
BASIC TYPE: RU

PRINT:
09-2675

SHEET:
1 OF 1

PUMP SHAFT, ADJUSTING NUT, AND
LOCKING SCREWS ARE NOT
FURNISHED WITH MOTOR



ALL DIMENSIONS ARE IN INCHES AND MILLIMETERS

UNITS	P ²	AA	AB	AC	AF	AG	AJ	AK +.005
IN	23.38	3 1/2 NPT	22.56	16.94	10.00	50.06	14.750	13.500
MM	594		573	430	254	1272	374.65	342.90

UNITS	BB MIN	BE	BF	BV	CD	EO	XO
IN	.25	.75	.69	21.19	44.78	5.13	27.50
MM	6	19	18	538	1137	130	699

FRAME	UNITS	BD MAX
H444,H445TP	IN	16.50
	MM	419
H444,H445TPA	IN	20.00
	MM	508

- 1: ALL ROUGH CASTING DIMENSIONS MAY VARY BY .25" DUE TO CASTING AND/OR FABRICATION VARIATIONS.
- 2: LARGEST MOTOR WIDTH.
- 3: CONDUIT BOX MAY BE LOCATED ON EITHER SIDE OR ON TOP OF MOTOR. CONDUIT OPENINGS MAY BE LOCATED IN STEPS OF 90 DEGREES REGARDLESS OF LOCATION. STANDARD AS SHOWN WITH CONDUIT OPENING DOWN.
- 4: ALL TOLERANCES SHOWN ARE IN INCHES ONLY.

TOLERANCES	
FACE RUNOUT	.007 T.I.R.
PERMISSIBLE ECCENTRICITY OF MOUNTING RABBET	.007 T.I.R.

09-2675/A

Nidec Motor Corporation
St. Louis, Missouri

INFORMATION DISCLOSED ON THIS DOCUMENT
IS CONSIDERED PROPRIETARY AND SHALL NOT BE
REPRODUCED OR DISCLOSED WITHOUT WRITTEN
CONSENT OF NIDEC MOTOR CORPORATION



ISSUED BY
R. KING
APPROVED BY
J. O'BRIEN

IHP_DP_NMCA (MAR-2011) SOLIDEDGE