

EFFECTIVE:  
09-SEP-11

SUPERSEDES:  
10-AUG-10

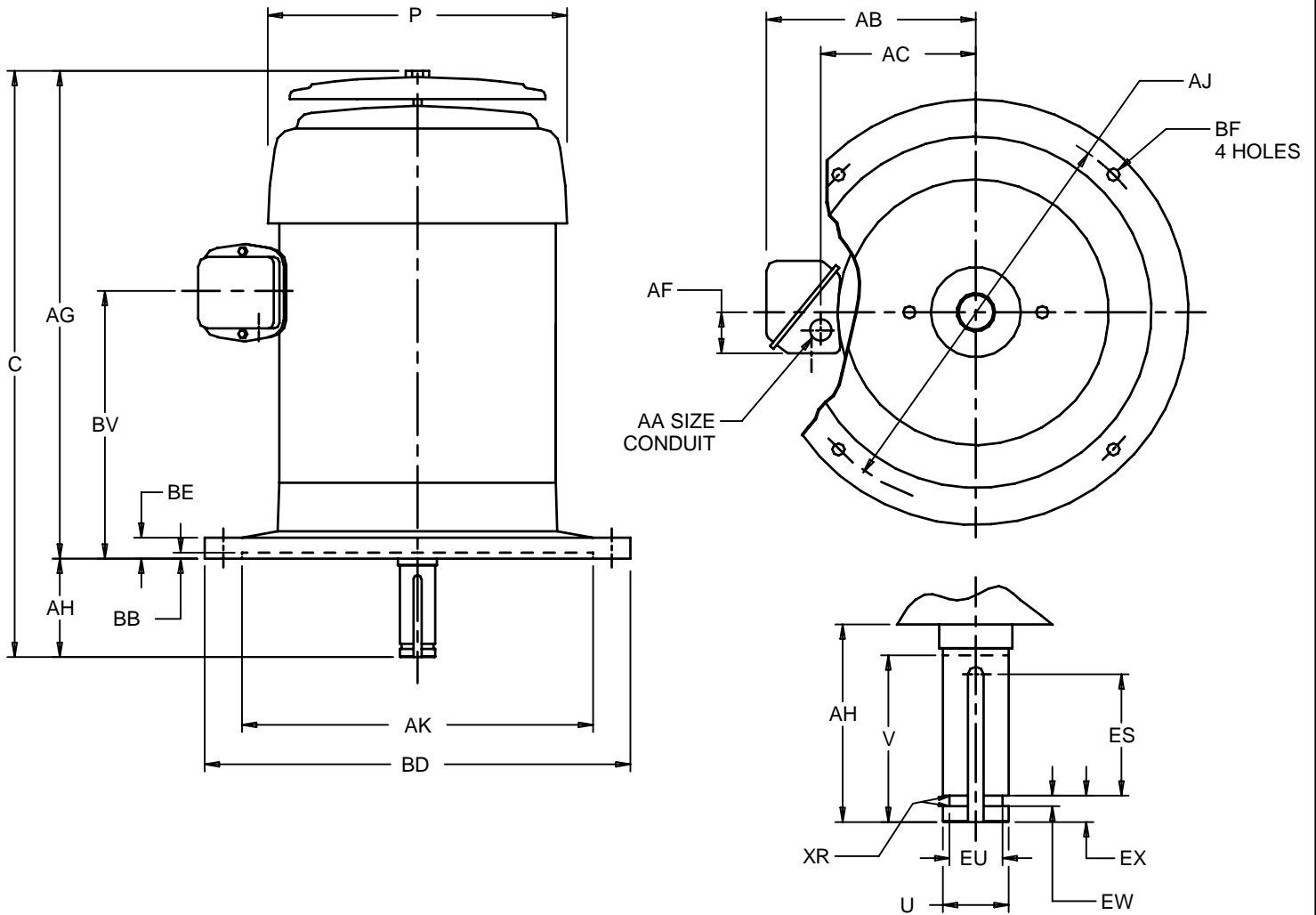
# VERTICAL MOTORS

TEFC

FRAME: 143, 145VP  
BASIC TYPE: TV, TVE, TVS

PRINT:  
09-2964

SHEET:  
1 OF 1



ALL DIMENSIONS ARE IN INCHES AND MILLIMETERS

UNITS	C	P <sup>3</sup>	U -.0005	V MIN	AA	AB	AC	AF	AG	AH <sup>4</sup>	AJ	AK +.003
IN	16.00	7.25	.8750	2.75	.750	6.25	4.69	1.59	13.25	2.75	9.125	8.250
MM	406	184	22.225	70		159	119	40	337	70	231.78	209.53

UNITS	BB MIN	BD MAX	BE	BF	BV	ES MIN	EU -.005	EW +.002	EX -.005	SQ KEY	XR
IN	.19	10.00	.50	.44	8.88	1.28	.688	.375	.750	.188	.03
MM	5	254	12	11	226	33	17.48	9.53	19.05	4.78	1

- 1: ALL ROUGH CASTING DIMENSIONS MAY VARY BY .25" DUE TO CASTING AND/OR FABRICATION VARIATIONS.
- 2: CONDUIT OPENING MAY BE LOCATED IN STEPS OF 180 DEGREES. STANDARD AS SHOWN WITH CONDUIT OPENING DOWN.
- 3: LARGEST MOTOR WIDTH.
- 4: FRAME REFERENCE: 6.750"/143/145
- 5: TOLERANCES SHOWN ARE IN INCHES ONLY.

TOLERANCES	
FACE RUNOUT	.004 T.I.R.
PERMISSIBLE ECCENTRICITY OF MOUNTING RABBET	.004 T.I.R.
PERMISSIBLE SHAFT RUNOUT	.002 T.I.R.

09-2964/A

**Nidec Motor Corporation**  
St. Louis, Missouri

INFORMATION DISCLOSED ON THIS DOCUMENT IS CONSIDERED PROPRIETARY AND SHALL NOT BE REPRODUCED OR DISCLOSED WITHOUT WRITTEN CONSENT OF NIDEC MOTOR CORPORATION



ISSUED BY  
**R. KING**  
APPROVED BY  
**K. POTTER**

IHP\_DP\_NMCA (MAR-2011) SOLIDEDGE