

EFFECTIVE:
16-JUL-14

DIMENSION PRINT

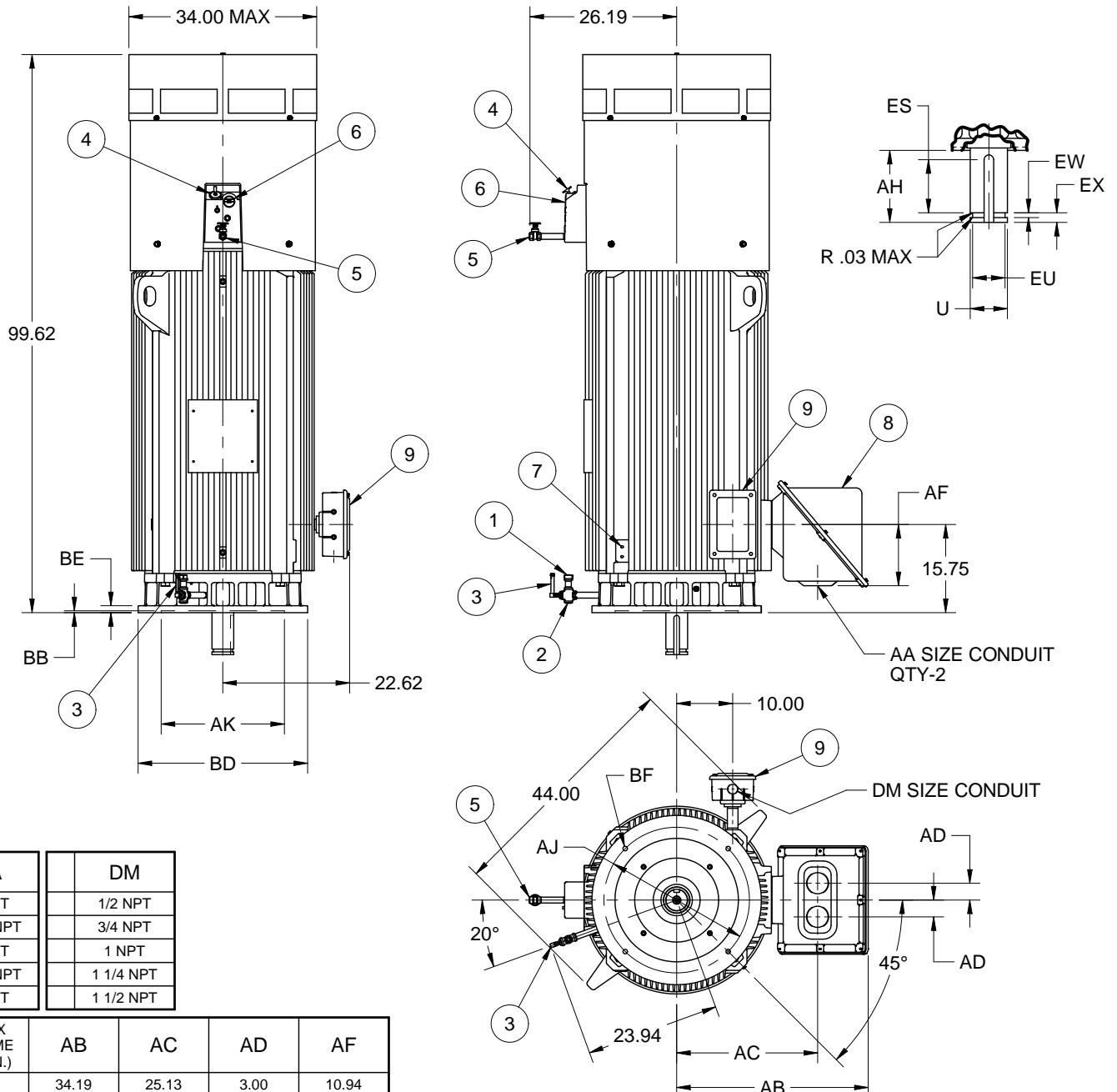
TOTALLY ENCLOSED FAN COOLED

FRAME: 5812VP, VPA
BASIC TYPE: JV4

PRINT:
09-3035

SUPERSEDES:
19-MAR-13

SHEET:
1 OF 1



AA	DM
2 NPT	1/2 NPT
2 1/2 NPT	3/4 NPT
3 NPT	1 NPT
3 1/2 NPT	1 1/4 NPT
4 NPT	1 1/2 NPT

C/BOX VOLUME (CU. IN.)	AB	AC	AD	AF
3400	34.19	25.13	3.00	10.94

U	AH	ES	EU	EW	EX	SQ
-.001	±.062	MIN	-.005	+.002	-.005	KEY
3.875	7.500	5.500	3.375	.500	1.000	1.000

FRAME	AJ	AK	BB	BD	BE	BF	QTY. OF BF HOLES
5812VP	26.00	22.000	.25	30.50	1.25	.813	4
5812VPA	32.00	26.000		36.00		1.000	8

FEATURE LISTING	
1 LOWER SUMP OIL FILL	6 UPPER SUMP SIGHT WINDOW
2 LOWER SUMP OIL DRAIN	7 GRD PADS, DIAG OPP, 1/2-13
3 LOWER SUMP SIGHT WINDOW	8 MAIN CONDUIT BOX
4 UPPER SUMP OIL FILL	9 ACCESSORY CONDUIT BOX (IF REQUESTED)
5 UPPER SUMP OIL DRAIN	

ALL DIMENSIONS ARE IN INCHES.

TOLERANCES	
FACE RUNOUT	.007 TIR
PERMISSIBLE ECCENTRICITY OF MOUNTING RABBET	.007 TIR
PERMISSIBLE SHAFT RUNOUT	.003 TIR
MAXIMUM SHAFT END PLAY	.010
NON-MACHINED DIMENSIONS MAY VARY BY ±.25	

09-3035/A

Nidec Motor Corporation
St. Louis, Missouri

INFORMATION DISCLOSED ON THIS DOCUMENT IS CONSIDERED PROPRIETARY AND SHALL NOT BE REPRODUCED OR DISCLOSED WITHOUT WRITTEN CONSENT OF NIDEC MOTOR CORPORATION



ISSUED BY
R. KING
APPROVED BY
K. POTTER

IHP_DP_NMCA (MAR-2011) SOLIDEDGE