

EFFECTIVE:
14-OCT-21

DIMENSION PRINT

WORLD MOTOR VERTICAL CORRODUTY

PRINT:
10-1003

SUPERSEDES:
NEW

FRAME: 250HP, HPA
BASIC TYPE: TVC

SHEET:
1 OF 1

ALL DIMENSIONS ARE IN INCHES AND MILLIMETERS

UNITS	C	P ²	U -.0005	AA	AB
IN	26.59	13.22	1.1250	1-1/4 NPT	11.13
MM	675	336	28.575		283

UNITS	AC	AF	AG	AH	AJ
IN	8.66	3.00	23.84	2.75	9.125
MM	220	76	606	70	231.78

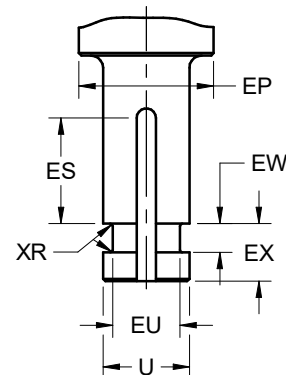
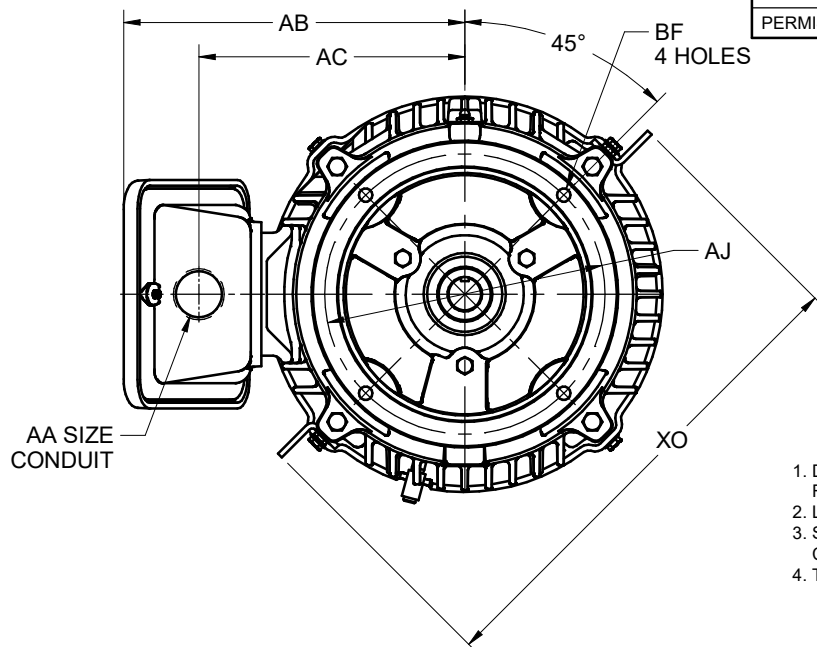
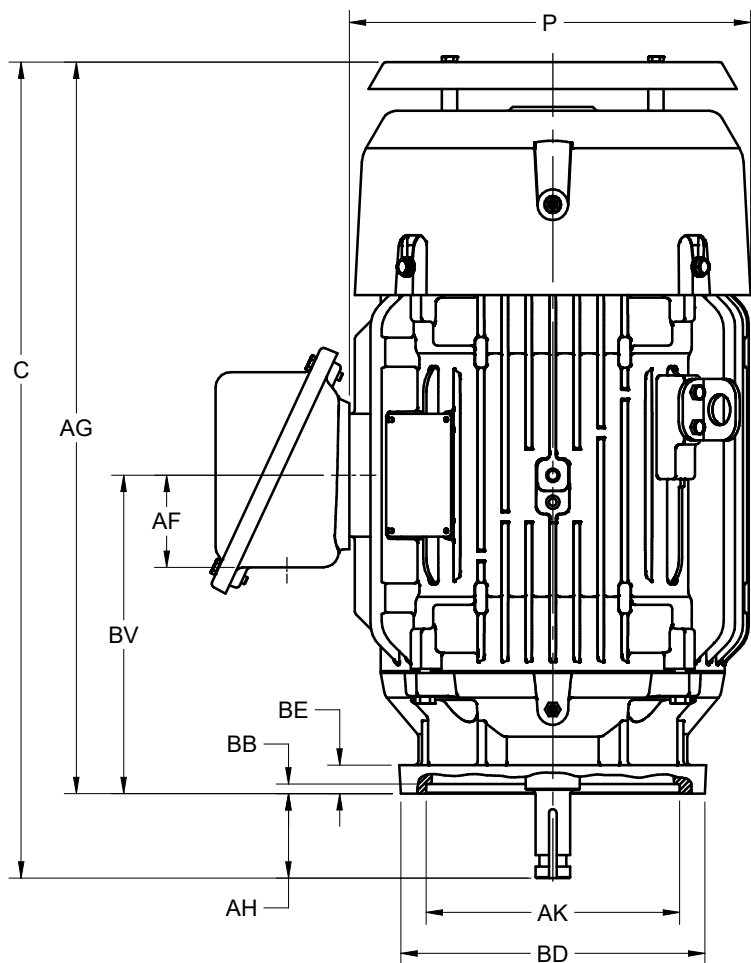
UNITS	AK +.003	BB MIN	BE	BF	BV
IN	8.25	.19	.94	.44	10.38
MM	209.55	5	24	11	264

UNITS	EP MIN	ES MIN	EU -.005	EW +.002	EX -.005
IN	1.750	1.28	.875	.375	.750
MM	44.45	33	22.23	9.53	19.05

UNITS	XO	XR	SQ KEY
IN	15.94	.03	.250
MM	405	1	6.35

FRAME	UNITS	BD MAX
254, 256HP	IN	10.00
	MM	254
254, 256HPA	IN	12.00
	MM	305

TOLERANCES	
FACE RUNOUT	.004 TIR
PERMISSIBLE ECCENTRICITY OF MOUNTING RABBET	.004 TIR
PERMISSIBLE SHAFT RUNOUT	.002 TIR



1. DIMENSIONS MAY VARY .25" DUE TO CASTING AND/OR FABRICATION VARIATIONS
2. LARGEST MOTOR WIDTH
3. STANDARD AS SHOWN WITH CONDUIT OPENING DOWN. CONDUIT OPENING MAY BE LOCATED IN STEPS OF 90°
4. TOLERANCES ARE SHOWN IN INCHES ONLY

10-1003/-

Nidec Motor Corporation
St. Louis, Missouri

INFORMATION DISCLOSED ON THIS DOCUMENT
IS CONSIDERED PROPRIETARY AND SHALL NOT BE
REPRODUCED OR DISCLOSED WITHOUT WRITTEN
CONSENT OF NIDEC MOTOR CORPORATION



ISSUED BY
R. TIMMERMANN
APPROVED BY
E. O'HARA

IHP_DP_NMCA (MAR-2011) SOLIDEDGE