

EFFECTIVE:
07-SEP-23

SUPERSEDES:
14-OCT-21

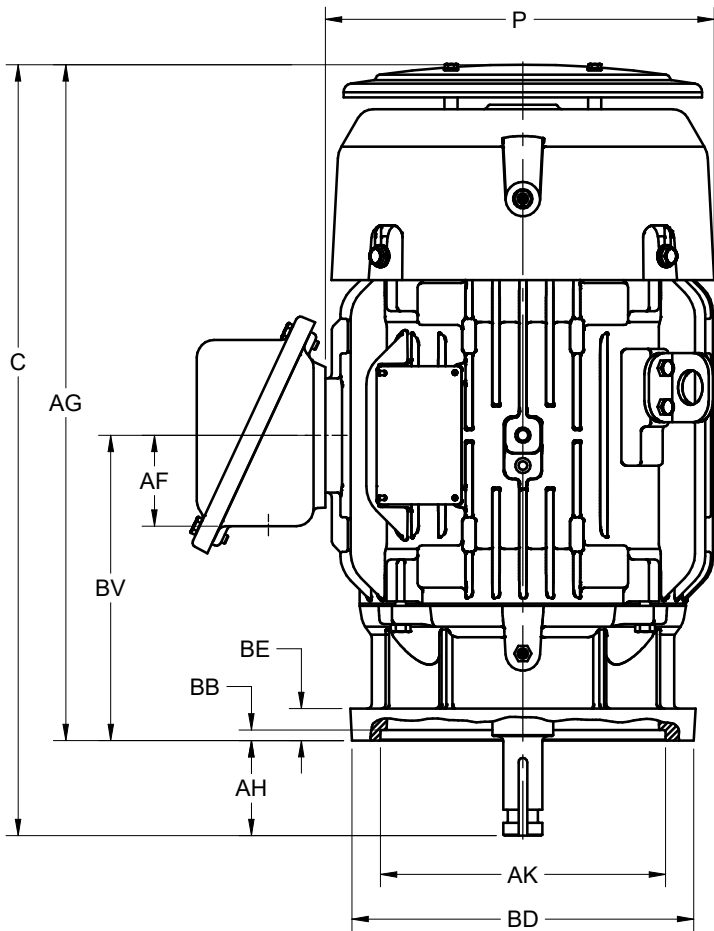
DIMENSION PRINT

WORLD MOTOR VERTICAL CORRODUTY

FRAME: 210HP
BASIC TYPE: TVC

PRINT:
10-1006

SHEET:
1 OF 1



ALL DIMENSIONS ARE IN INCHES AND MILLIMETERS

UNITS	C	P ²	U -.0005	AA	AB
IN	22.31	11.50	1.1250	1 NPT	9.56
MM	567	292	28.575		243

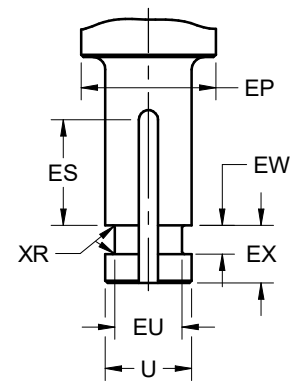
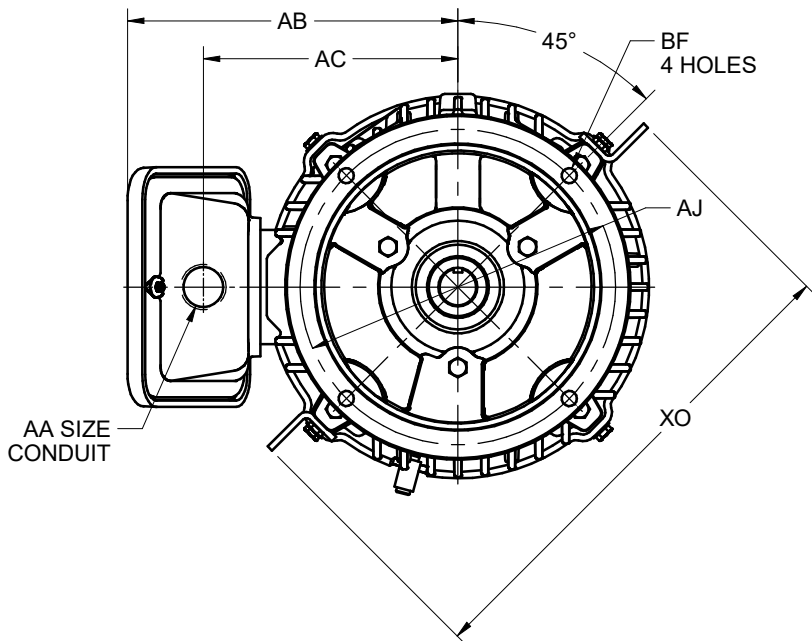
UNITS	AC	AF	AG	AH	AJ
IN	7.38	2.63	19.56	2.75	9.125
MM	187	67	497	70	231.78

UNITS	AK +.003	BB MIN	BD MAX	BE	BF
IN	8.250	.19	10.00	.94	.44
MM	209.55	5	254	24	11

UNITS	BV	EP MIN	ES MIN	EU -.005	EW +.002
IN	8.84	1.375	1.28	.875	.375
MM	225	34.93	33	22.23	9.53

UNITS	EX -.005	XO	XR	SQ KEY
IN	.750	14.31	.03	.250
MM	19.05	363	1	6.35

TOLERANCES	
FACE RUNOUT	.004 TIR
PERMISSIBLE ECCENTRICITY OF MOUNTING RABBET	.004 TIR
PERMISSIBLE SHAFT RUNOUT	.002 TIR



1. DIMENSIONS MAY VARY .25" DUE TO CASTING AND/OR FABRICATION VARIATIONS
2. LARGEST MOTOR WIDTH
3. STANDARD AS SHOWN WITH CONDUIT OPENING DOWN. CONDUIT OPENING MAY BE LOCATED IN STEPS OF 90°
4. TOLERANCES ARE SHOWN IN INCHES ONLY

10-1006/A

Nidec Motor Corporation
St. Louis, Missouri

INFORMATION DISCLOSED ON THIS DOCUMENT IS CONSIDERED PROPRIETARY AND SHALL NOT BE REPRODUCED OR DISCLOSED WITHOUT WRITTEN CONSENT OF NIDEC MOTOR CORPORATION



ISSUED BY
R. TIMMERMANN
APPROVED BY
E. TREVINO

IHP_DP_NMCA (MAR-2011) SOLIDEDGE