

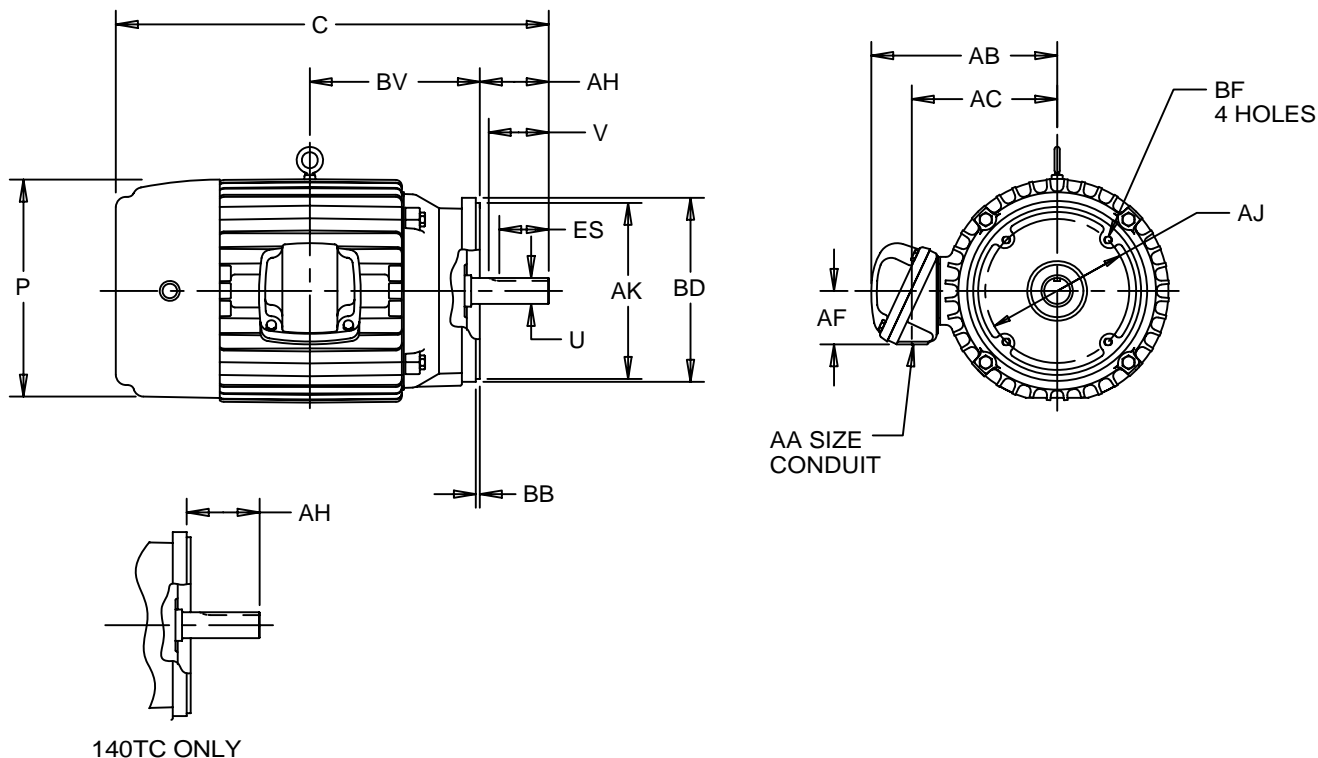
EFFECTIVE:
18-APR-11

HORIZONTAL MOTORS WITH NEMA "C" BRACKET FRAME: 140 THRU 250TC BASIC TYPE: TC

PRINT:
1012-1-67

SUPERSEDES:
04-JAN-02

SHEET:
1 OF 2



ALL DIMENSIONS ARE IN INCHES

| FRAME | C | P ² | U ³ | V MIN | AA | AB | AC | AF | AH | AJ |
|--------------------|-------|----------------|----------------|----------|-----------|-------|------|------|------|-------|
| 140TC ⁷ | 13.50 | 8.00 | .8750 | 2.13 | 3/4 NPT | 6.91 | 5.38 | 1.75 | 2.13 | 5.875 |
| 180TC | 17.44 | 9.50 | 1.1250 | 2.63 | 3/4 NPT | 8.03 | 5.75 | 2.13 | 2.63 | 7.250 |
| 180TCH | 17.44 | 9.50 | 1.1250 | 2.63 | 3/4 NPT | 8.03 | 5.75 | 2.13 | 2.63 | 5.875 |
| 210TC | 20.75 | 11.13 | 1.3750 | 3.13 | 1 NPT | 9.75 | 7.25 | 2.00 | 3.13 | 7.250 |
| 250TC | 24.88 | 13.31 | 1.625 | 3.75 | 1 1/2 NPT | 11.50 | 8.53 | 2.63 | 3.75 | 7.250 |

| FRAME | AK -.003 | BB MIN | BD MAX | BF ⁴ | BV | ES MIN | SQ KEY |
|--------|-------------|-----------|-----------|-----------------|-------|-----------|-----------|
| 140TC | 4.500 | .16 | 6.50 | 3/8-16 X .56 | 7.00 | 1.41 | .188 |
| 180TC | 8.500 | .31 | 9.00 | 1/2-13 X .75 | 5.63 | 1.78 | .250 |
| 180TCH | 4.500 | .16 | 6.50 | 3/8-16 X .56 | 5.63 | 1.78 | .250 |
| 210TC | 8.500 | .31 | 9.00 | 1/2-13 X .75 | 8.00 | 2.41 | .313 |
| 250TC | 8.500 | .31 | 10.00 | 1/2-13 X .75 | 10.00 | 2.91 | .375 |

| TOLERANCES | |
|--|-------------|
| FACE RUNOUT | .004 T.I.R. |
| PERMISSIBLE ECCENTRICITY OF MOUNTING RABBET | .004 T.I.R. |
| PERMISSIBLE SHAFT RUNOUT | .002 T.I.R. |

- ALL ROUGH DIMENSIONS MAY VARY BY .25" DUE TO CASTING AND/OR FABRICATION VARIATIONS.
- LARGEST MOTOR WIDTH.
- SHAFT EXTENSION DIAMETER TOLERANCE: +.0000; -.0005 UP 1-1/2" INCLUSIVE. LARGE DIAMETERS: +.000; -.001.
- TAP SIZE AND BOLT PENETRATION ALLOWANCE.

- CONDUIT BOX MAY BE LOCATED ON EITHER SIDE OR ON TOP OF MOTOR. CONDUIT OPENINGS MAY BE LOCATED IN STEPS OF 90 DEGREES REGARDLESS OF LOCATION. STANDARD AS SHOWN WITH CONDUIT OPENING DOWN.
- ALL TAPPED HOLES ARE UNIFIED NATIONAL COARSE, RIGHT HAND THREAD.
- 140TC TCF TYPES ONLY

Nidec Motor Corporation
St. Louis, Missouri

INFORMATION DISCLOSED ON THIS DOCUMENT IS CONSIDERED PROPRIETARY AND SHALL NOT BE REPRODUCED OR DISCLOSED WITHOUT WRITTEN CONSENT OF NIDEC MOTOR CORPORATION



ISSUED BY
R. KING
APPROVED BY
K. POTTER

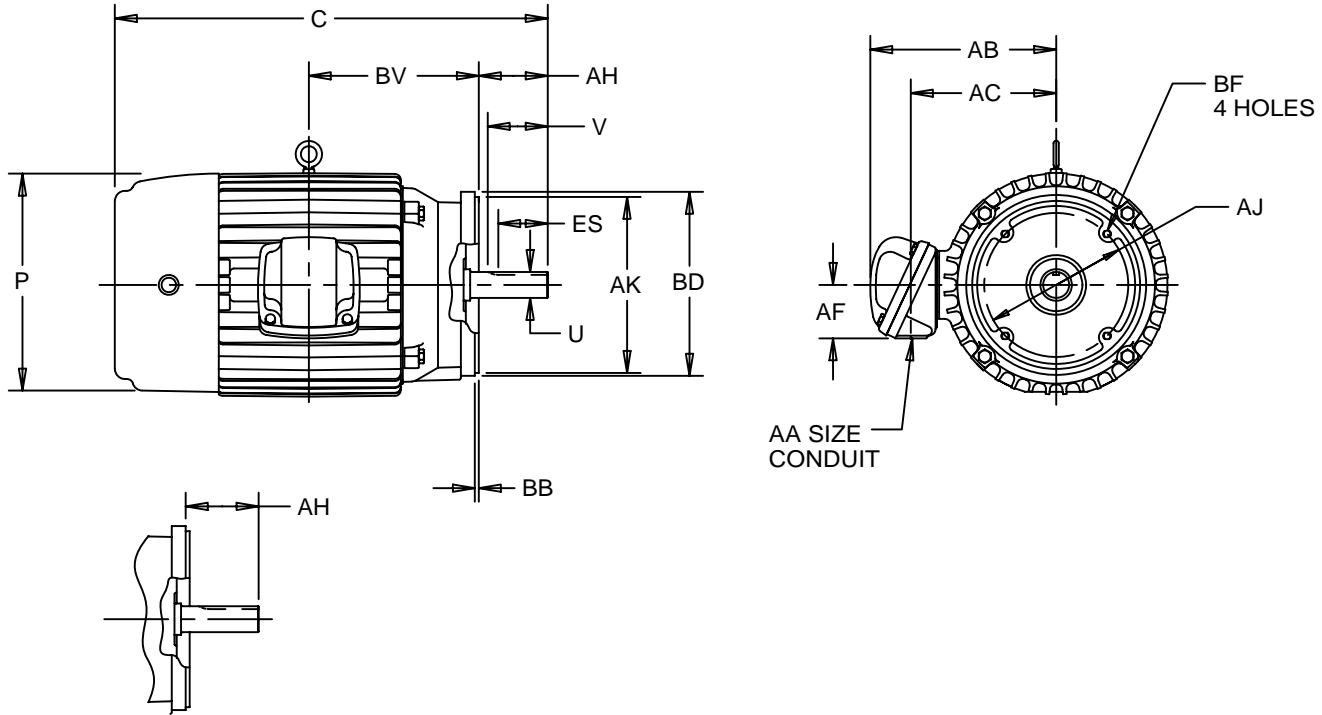
EFFECTIVE:
18-APR-11

SUPERSEDES:
04-JAN-02

HORIZONTAL MOTORS WITH NEMA "C" BRACKET FRAME: 140 THRU 250TC BASIC TYPE: TC

PRINT:
1012-1-67

SHEET:
2 OF 2



140TC ONLY

ALL DIMENSIONS ARE IN MILLIMETERS

| FRAME | C | P ² | U ³ | V MIN | AA | AB | AC | AF | AH | AJ |
|--------------------|-----|----------------|----------------|----------|-----------|-----|-----|----|----|--------|
| 140TC ⁷ | 343 | 203 | 22.225 | 54 | 3/4 NPT | 176 | 137 | 44 | 54 | 149.23 |
| 180TC | 443 | 241 | 28.575 | 67 | 3/4 NPT | 204 | 146 | 54 | 67 | 184.15 |
| 180TCH | 443 | 241 | 28.575 | 67 | 3/4 NPT | 204 | 146 | 54 | 67 | 149.23 |
| 210TC | 527 | 283 | 34.925 | 80 | 1 NPT | 248 | 184 | 51 | 80 | 184.15 |
| 250TC | 632 | 338 | 41.28 | 95 | 1-1/2 NPT | 292 | 217 | 67 | 95 | 184.15 |

| FRAME | AK -.003 | BB MIN | BD MAX | BF ⁴ | BV | ES MIN | SQ KEY |
|--------|-------------|-----------|-----------|-----------------|-----|-----------|-----------|
| 140TC | 114.30 | 4 | 165 | 3/8-16 X .56 | 178 | 36 | 4.78 |
| 180TC | 215.90 | 8 | 229 | 1/2-13 X .75 | 143 | 45 | 6.35 |
| 180TCH | 114.30 | 4 | 165 | 3/8-16 X .56 | 143 | 45 | 6.35 |
| 210TC | 215.90 | 8 | 229 | 1/2-13 X .75 | 203 | 61 | 7.95 |
| 250TC | 215.90 | 8 | 254 | 1/2-13 X .75 | 254 | 74 | 9.53 |

TOLERANCES

| | |
|--|-------------|
| FACE RUNOUT | .004 T.I.R. |
| PERMISSIBLE ECCENTRICITY OF MOUNTING RABBET | .004 T.I.R. |
| PERMISSIBLE SHAFT RUNOUT | .002 T.I.R. |

- ALL ROUGH DIMENSIONS MAY VARY BY .25" DUE TO CASTING AND/OR FABRICATION VARIATIONS.
- LARGEST MOTOR WIDTH.
- SHAFT EXTENSION DIAMETER TOLERANCE: +.0000; -.0005 UP 1-1/2" INCLUSIVE. LARGE DIAMETERS: +.000; -.001.
- TAP SIZE AND BOLT PENETRATION ALLOWANCE.

- CONDUIT BOX MAY BE LOCATED ON EITHER SIDE OR ON TOP OF MOTOR. CONDUIT OPENINGS MAY BE LOCATED IN STEPS OF 90 DEGREES REGARDLESS OF LOCATION. STANDARD AS SHOWN WITH CONDUIT OPENING DOWN.
- ALL TAPPED HOLES ARE UNIFIED NATIONAL COARSE, RIGHT HAND THREAD.
- 140TC TCF TYPES ONLY

Nidec Motor Corporation
St. Louis, Missouri

INFORMATION DISCLOSED ON THIS DOCUMENT IS CONSIDERED PROPRIETARY AND SHALL NOT BE REPRODUCED OR DISCLOSED WITHOUT WRITTEN CONSENT OF NIDEC MOTOR CORPORATION



ISSUED BY
R. KING
APPROVED BY
K. POTTER