

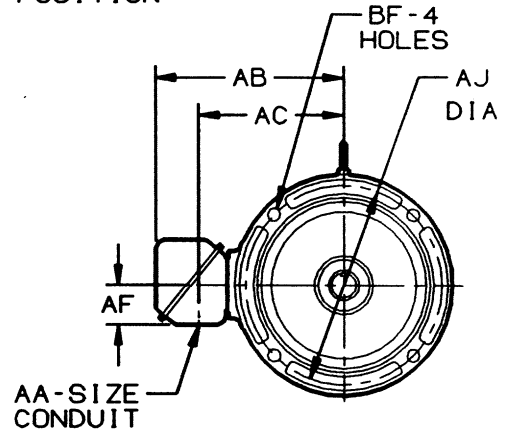
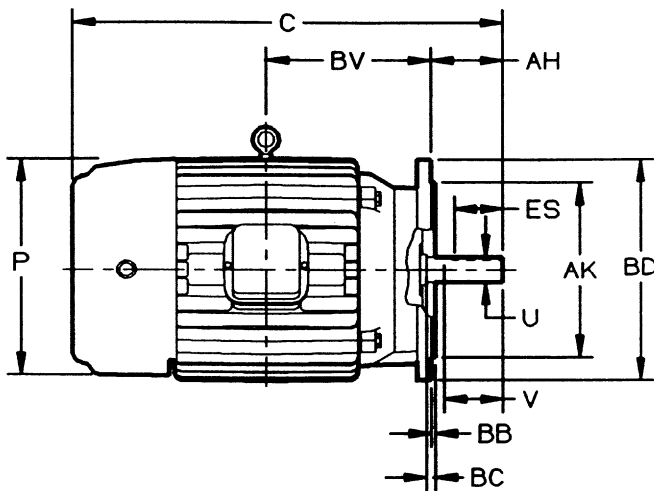


# HORIZONTAL MOTORS

W/NEMA "C" BRACKET  
 FRAME: 182C, 184C  
 TYPE: JADF, JDEF

REFERENCE: 1022-1-80  
 EFFECTIVE: 08-JUN-94  
 SUPERSEDES: NEW

STANDARD F-1 ASSEMBLY POSITION



ALL DIMENSIONS ARE IN INCHES

C	P	U	V	AA	AB	AC	AF	AH	AJ
15-1/16	9-1/8	.0005 7/8	MIN 2-1/8	3/4	8-9/32	5-25/32	2	2-1/8	5-7/8

AK	BB	BC	BD	BF	BV	ES	SQ
.003 4-1/2	1/8	1/8	MAX 6-1/2	3/8-16 X 5/8	8	MIN 1-17/32	KEY 3/16

- 1: ALL ROUGH CASTING DIMENSIONS MAY VARY BY 1/4" DUE TO CASTING VARIATIONS.
- 2: TAP SIZE AND BOLT PENETRATION ALLOWANCE.
- 3: ALL TAPPED HOLES ARE UNIFIED NATIONAL COARSE, RIGHT HAND THREAD.

- 4: CONDUIT BOX MAY BE LOCATED ON EITHER SIDE OF MOTOR. CONDUIT OPENINGS MAY BE LOCATED IN STEPS OF 90 DEGREES REGARDLESS OF LOCATION. STANDARD AS SHOWN WITH CONDUIT OPENING DOWN.
- 5: LARGEST MOTOR WIDTH.

**TOLERANCES**

FACE RUNOUT	.004 F.I.R.
PERMISSIBLE ECCENTRICITY OF MOUNTING RABBIT	.004 F.I.R.
PERMISSIBLE SHAFT RUNOUT	.002 F.I.R.

CERTIFIED BY: \_\_\_\_\_ DATE: \_\_\_\_\_



**U.S. ELECTRICAL MOTORS**  
 DIVISION OF EMERSON ELECTRIC CO.



DO NOT USE FOR CONSTRUCTION PURPOSES UNLESS CERTIFIED