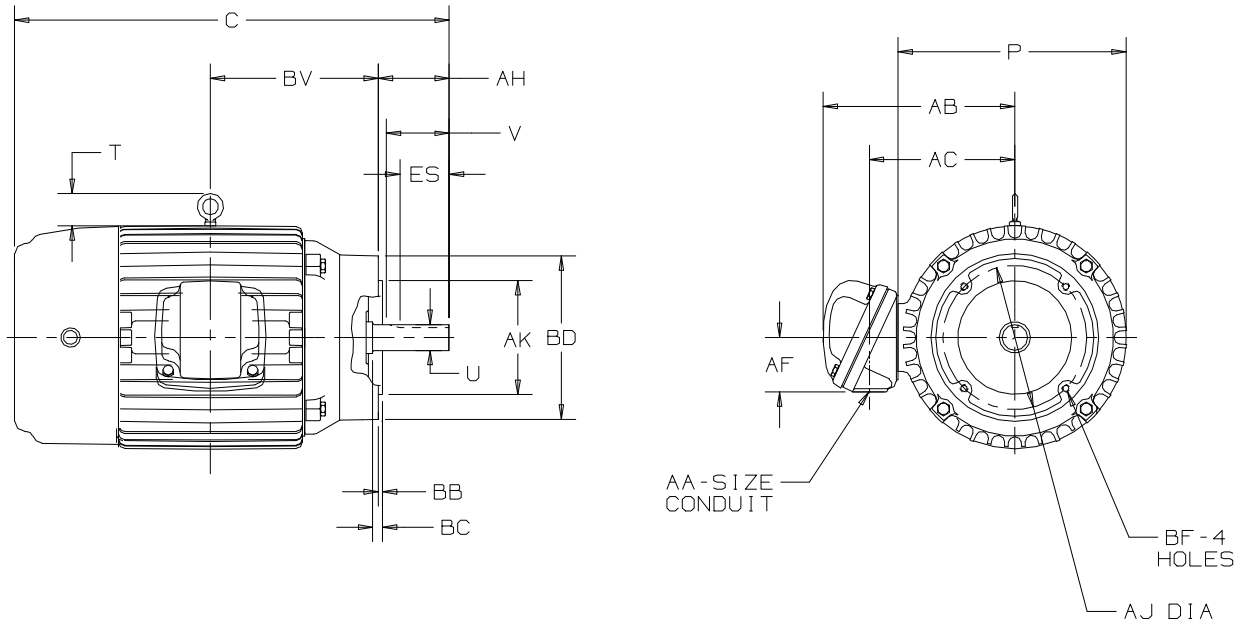


HORIZONTAL MOTORS

WITH NEMA "C" BRACKET
 FRAME: 182,184C
 TYPE: EAF, EADF

PRINT: 1022-1-85
 EFFECTIVE: 27-AUG-01
 SUPERSEDES: 10-JUL-97

SHEET 1 OF 1



ALL DIMENSIONS ARE IN INCHES

C	P ⁵	T	U -.0005	V MIN	AA	AB	AC	AF	AH	AJ
15.94	9.50	1.63	.8750	2.00	3/4 NPT	7.63	5.81	2.25	2.13	5.875
	AK	BB	BC	BD	BF ²	BV	ES MIN	SQ KEY		
	.003	.16	-.13	6.50	3/8-16 X .56	6.25	1.91	.188		

TOLERANCES	
FACE RUNOUT	.004 F.I.R.
PERMISSIBLE ECCENTRICITY OF MOUNTING RABBET	.004 F.I.R.
PERMISSIBLE SHAFT RUNOUT	.002 F.I.R.

- 1: ALL ROUGH CASTING DIMENSIONS MAY VARY BY .25" DUE TO CASTING VARIATIONS.
- 2: TAP SIZE AND BOLT PENETRATION ALLOWANCE.
- 3: ALL TAPPED HOLES ARE UNIFIED NATIONAL COARSE, RIGHT HAND THREAD.

- 4: CONDUIT BOX MAY BE LOCATED ON EITHER SIDE OF MOTOR. CONDUIT OPENINGS MAY BE LOCATED IN STEPS OF 90 DEGREES REGARDLESS OF LOCATION. STANDARD AS SHOWN WITH CONDUIT OPENING DOWN.
- 5: LARGEST MOTOR WIDTH.



U.S. ELECTRICAL MOTORS
 DIVISION OF EMERSON ELECTRIC CO.



DO NOT USE FOR CONSTRUCTION
 PURPOSES UNLESS CERTIFIED