

EFFECTIVE:  
**19-MAY-17**

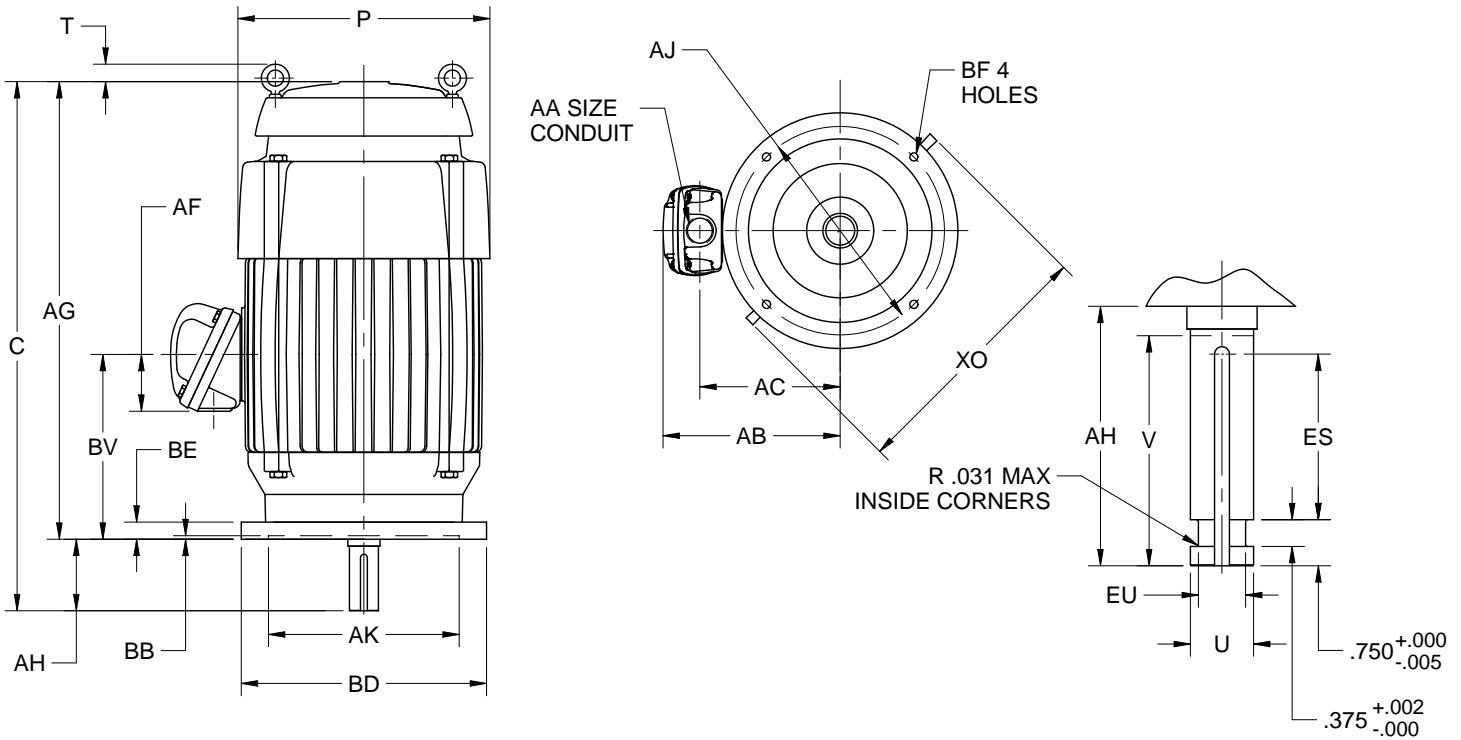
# DIMENSION PRINT

PRINT:  
**1116-3-11**

SUPERSEDES:  
**25-APR-11**

FRAME: 256LP THRU 286LP  
BASIC TYPE: TVCE9

SHEET:  
**1 OF 1**



ALL DIMENSIONS ARE IN INCHES AND MILLIMETERS

FRAME	UNITS	C	P <sup>3</sup>	T	AA	AB	AC	AF	AG	AH ±.031	BE
254,256	IN	27.56	13.19	1.63	1-1/2 NPT	11.50	8.50	2.63	24.81	2.750	.59
	MM	700	335	41		292	216	67	630	69.85	15
284,286	IN	31.88	14.56	1.50	1-1/2 NPT	11.94	9.06	2.63	27.38	4.500	.91
	MM	810	370	38		303	230	67	695	114.30	23

FRAME	UNITS	BV	XO
254,256	IN	10.00	---
	MM	254	---
284,286	IN	11.19	---
	MM	284	---

FRAME	UNITS	U -.001	V MIN	AJ	AK +.003	BB MIN	BD MAX	BF	ES MIN	EU -.005	SQ KEY
254,256LP	IN	1.625	2.75	9.125	8.250	.19	10.00	.44	1.88	1.250	.375
	MM	41.27	70	2.32	209.55	5	254	11	48	31.75	9.52
284,286LP	IN	2.125	4.00	9.125	8.250	.19	10.00	.44	3.06	1.750	.500
	MM	53.97	102	2.32	209.55	5	254	11	78	44.45	12.70

TOLERANCES	
FACE RUNOUT	.004 T.I.R.
PERMISSIBLE ECCENTRICITY OF MOUNTING RABBET	.004 T.I.R.
PERMISSIBLE SHAFT RUNOUT	.001 T.I.R.
PERMISSIBLE SHAFT ENDPLAY	.0015 MAX

- ALL ROUGH CASTING DIMENSIONS MAY VARY BY .25" DUE TO CASTING VARIATIONS.
- CONDUIT OPENING MAY BE LOCATED IN STEPS OF 90 DEGREES, STANDARD AS SHOWN WITH CONDUIT OPENING DOWN.
- LARGEST MOTOR WIDTH.

**Nidec Motor Corporation**  
St. Louis, Missouri

INFORMATION DISCLOSED ON THIS DOCUMENT IS CONSIDERED PROPRIETARY AND SHALL NOT BE REPRODUCED OR DISCLOSED WITHOUT WRITTEN CONSENT OF NIDEC MOTOR CORPORATION



ISSUED BY  
**F. CRUZ**  
APPROVED BY  
**E. AYALA**