

EFFECTIVE:
09-APR-12

SUPERSEDES:
15-JAN-01

HORIZONTAL MOTORS

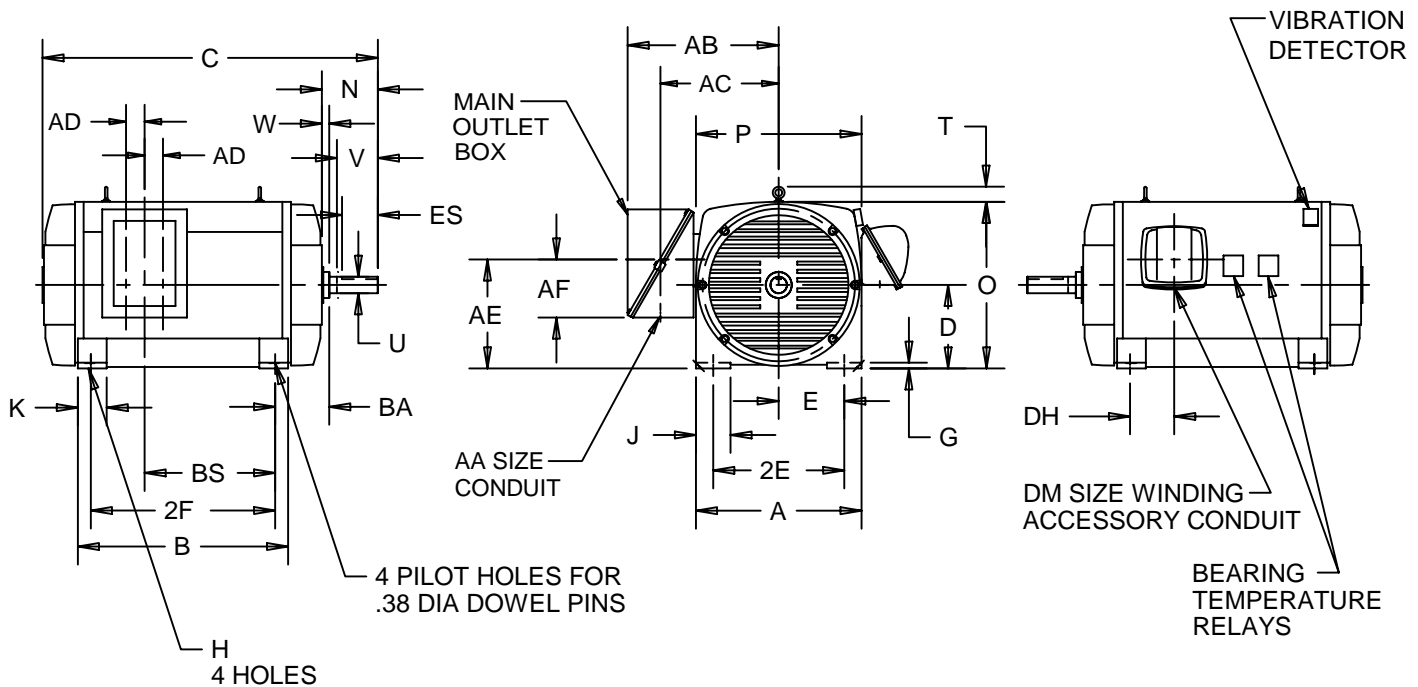
TITAN II

FRAME: 5800M, L

TYPE: R

PRINT:
14-1471

SHEET:
1 OF 1



ALL DIMENSIONS ARE IN INCHES

FRAME	A	D -.06	E	2E ±.03	G	H +.05	J	K	N	O	P	T
5800M	36.50	14.50	11.50	23.00	1.25	1.09	9.25	10.88	8.63	31.06	37.00	5.19
5800L	36.50	14.50	11.50	23.00	1.25	1.09	9.25	10.88	14.88	31.06	37.00	5.19

FRAME	U -.001	V MIN	W	BA	ES MIN	SQ KEY
5800M	4.125	8.00	.38	10.00	5.50	1.000
5800L	4.875	14.25	.38	10.00	12.88	1.250

FRAME	AA	QTY AA	AB	AC	AD	AE	AF	DH	DM
5800	3 1/2 NPT	2	35.56	26.69	3.00	15.94	10.94	4.69	1 1/2 NPT

FRAME	B	C	2F ±.03	BS
5810M	43.13	63.88	36.00	30.31
5810L	43.13	70.13	36.00	30.31
5811M	47.13	67.88	40.00	34.31
5811L	47.13	74.13	40.00	34.31
5812M	52.13	72.88	45.00	39.31
5812L	52.13	79.13	45.00	39.31
5813M	57.13	77.88	50.00	44.31
5813L	57.13	84.13	50.00	44.31

1: ALL ROUGH DIMENSIONS MAY VARY BY .25" DUE TO CASTING AND/OR FABRICATION VARIATIONS.

2: STANDARD ASSEMBLY POSITION F-1 IS SHOWN. F-2 IS PROVIDED WHEN SPECIFIED. CONDUIT OPENINGS MAY BE LOCATED IN STEPS OF 90 DEGREES REGARDLESS OF LOCATION. STANDARD AS SHOWN WITH CONDUIT OPENING DOWN.

14-1471/-

Nidec Motor Corporation
St. Louis, Missouri

INFORMATION DISCLOSED ON THIS DOCUMENT IS CONSIDERED PROPRIETARY AND SHALL NOT BE REPRODUCED OR DISCLOSED WITHOUT WRITTEN CONSENT OF NIDEC MOTOR CORPORATION



ISSUED BY
R. KING
APPROVED BY
J. HAGENE

IHP_DP_NMCA (MAR-2011) SOLIDEDGE